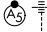


LOC I-OAK	APP CRS	Rwy Idg	28R	28L
109.9	278°	TDZE	5458	6213
		Apt Elev	9	9

ILS or LOC/DME RWY 28R

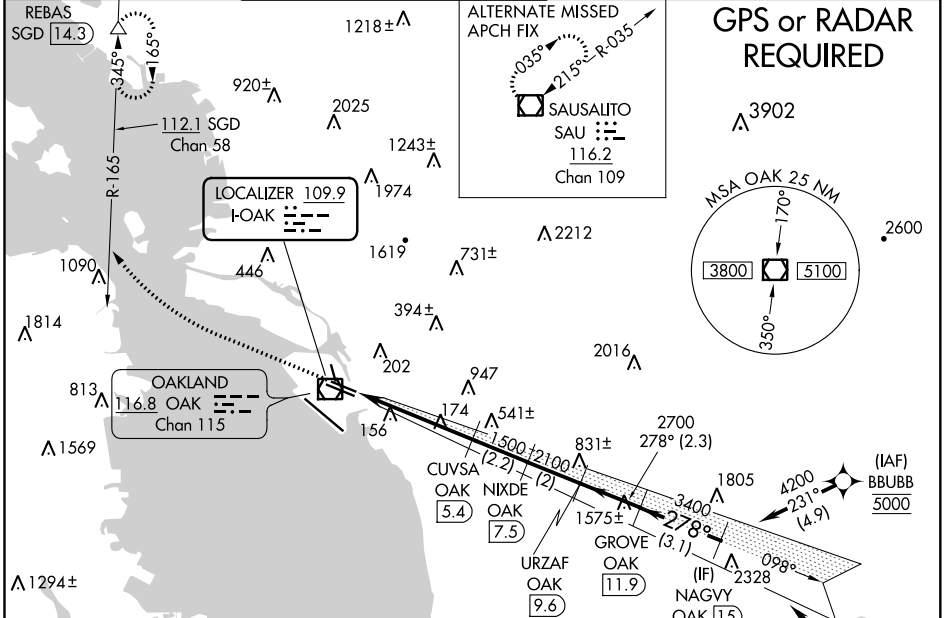
METRO OAKLAND INTL (OAK)

⚠ DME required. DME from OAK VOR/DME. Simultaneous reception of I-OAK and OAK DME required.
 *RVR 1800 authorized with use of FD or AP or HUD to DA.

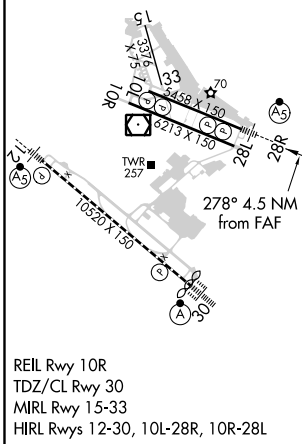
MALSR Rwy 28R 

MISSED APPROACH: Climb to 1900 then climbing right turn to 3000 on heading 340° and SGD VORTAC R-165 to REBAS/SGD 14.3 DME and hold.

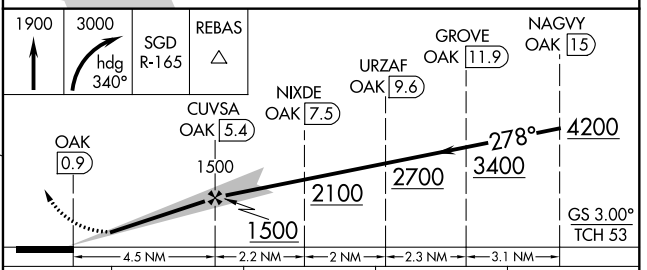
D-ATIS 133.775	NORCAL APP CON 125.35 263.15	OAKLAND TOWER 118.3 291.65 (Rwys 10L/R-28L/R, 15-33) 127.2 256.9 (Rwy 12-30)	GND CON 121.9 (Rwys 10L/R-28L/R, 15-33) 121.75 (Rwy 12-30)	CLNC DEL 121.1	CPDLC
--------------------------	--	--	--	--------------------------	-------



ELEV	9	D	TDZE 28R	7
			TDZE 28L	9



REIL Rwy 10R
 TDZ/CL Rwy 30
 MIRL Rwy 15-33
 HIRL Rwys 12-30, 10L-28R, 10R-28L



CATEGORY	A	B	C	D
*S-ILS 28R		207/24	200 (200-½)	
S-LOC 28R		440/24	433 (500-½)	
SIDESTEP 28L	440/55	431 (500-1)	440-1½	431 (500-1½)
C CIRCLING	560-1	551 (600-1)	660-1¾ 651 (700-1¾)	1400-3 1391 (1400-3)

SW-2, 09 SEP 2021 to 07 OCT 2021

SW-2, 09 SEP 2021 to 07 OCT 2021