

OAKES TWO ARRIVAL (RNAV) 150CT15
(OAKES.OAKES2)

OAKES TWO ARRIVAL (RNAV) Transition Routes

OAKLAND, CALIFORNIA
METRO OAKLAND INTL (OAK)

OAKLAND CENTER
134.37 281.5
NORCAL APP CON
124.8 263.15
D-ATIS
133.775
OAKLAND TOWER
118.3 291.65 (Rwys 28L/R)
127.2 256.9 (Rwy 30)
GND CON
121.9 (Rwys 28L/R)
121.75 (Rwy 30)

OAKES
FL320 280K
FL240
See following page
for Arrival Routes.

NOTE: Chart not to scale.

MRLET

FL200
11100
*
179°
(52)

POYSN

16000
*
9400
195°
(28)

MOLLA

16000
*
11400
245°
(31)

MONOH

FL200
246°
(47)

FL200
*
16500
267°
(137)

RUSME

NOTE: RADAR required.
NOTE: RNAV 1.
NOTE: DME/DME/IRU or GPS required.

MONOH TRANSITION (MONOH.OAKES2)
MRLET TRANSITION (MRLET.OAKES2)
RUSME TRANSITION (RUSME.OAKES2)

INSLO

TATOO



(CONTINUED ON FOLLOWING PAGE)

(OAKES.OAKES2) 21168
OAKES TWO ARRIVAL (RNAV)

AL-294 (FAA)
Transition Routes

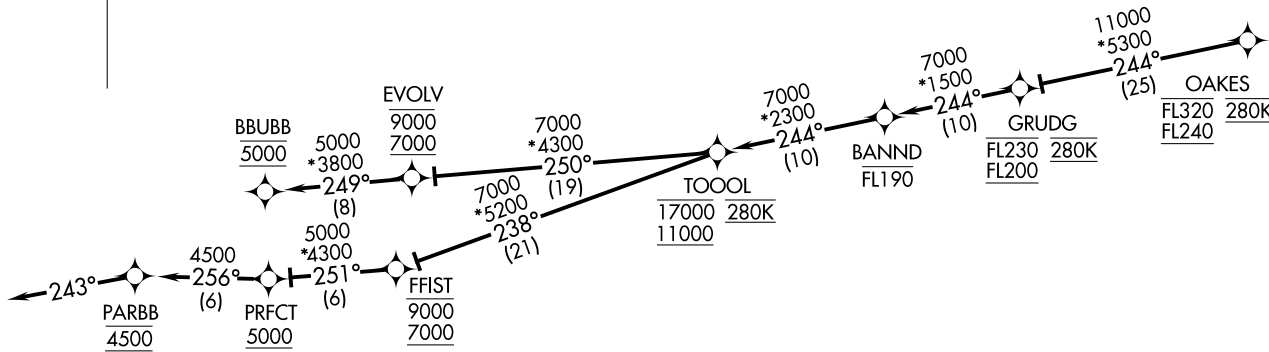
METRO OAKLAND INTL (OAK)
OAKLAND, CALIFORNIA

ARRIVAL ROUTE DESCRIPTION

From OAKES on track 244° to cross GRUDG between FL200 and FL230 and at 280K, then on track 244° to cross BANND at or below FL190.

LANDING RUNWAYS 28L/R: From BANND on track 244° to cross TOOOL between 11000 and 17000 and at 280K, then on track 250° to cross EVOLV between 7000 and 9000, then on track 249° to cross BBUBB at 5000. Expect assigned instrument approach procedure.

LANDING RUNWAY 30: From BANND on track 244° to cross TOOOL between 11000 and 17000 and at 280K, then on track 238° to cross FFIST between 7000 and 9000, then on track 251° to cross PRFCT at or above 5000, then on track 256° to cross PARBB at 4500, then on track 243°. Expect assigned instrument approach procedure.



NOTE: RADAR required.
 NOTE: RNAV 1.
 NOTE: DME/DME/IRU or GPS required.

NOTE: Chart not to scale.

OAKES TWO ARRIVAL (RNAV) Arrival Routes
 (OAKES, OAKES2) 150CT15
 OAKLAND, CALIFORNIA
 METRO OAKLAND INTL (OAK)

(OAKES, OAKES2) 21168
 OAKES TWO ARRIVAL (RNAV) Arrival Routes
 AL-294 (FAA)
 METRO OAKLAND INTL (OAK)
 OAKLAND, CALIFORNIA