

OAKLAND FIVE DEPARTURE

AL-294 (FAA)

METRO OAKLAND INTL (OAK)
OAKLAND, CALIFORNIA

D-ATIS
133.775
CLNC DEL
121.1
CPDLC
NORCAL DEP CON
120.9 323.2

**TOP ALTITUDE:
ASSIGNED BY ATC**

MENDOCINO
112.3 ENI
Chan 70
N39°03.19'-W123°16.46'
L-2, H-3

RED BLUFF
115.7 RBL
Chan 104
N40°05.93'-W122°14.18'
L-2, H-3

SACRAMENTO
115.2 SAC
Chan 99
N38°26.62'-W121°33.10'
L-2-3, H-3

SCAGGS ISLAND
112.1 SGD
Chan 58
N38°10.76'-W122°22.39'
L-2-3

GRTFL DEDHD ORRCA MOGEE

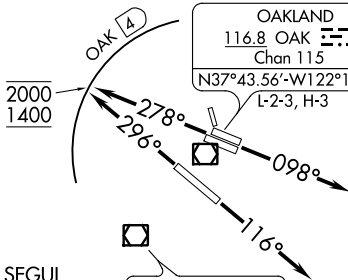
TIPRE

SYRAH

LINDEN
114.8 LIN
Chan 95
N38°04.47'
W121°00.23'
L-2-3, H-3

OAKLAND
116.8 OAK
Chan 115
N37°43.56'-W122°13.42'
L-2-3, H-3

ALCOA
N37°50.00'
W125°50.07'
H-3



BEBOP
N37°00.00'
W125°00.07'
H-3

SEGUL
N36°57.78'
W122°34.33'

WOODSIDE
113.9 OSI
Chan 86
N37°23.55'
W122°16.88'
L-2-3, H-3

NTELL

CINNY

CYPRS
N36°25.34'
W122°25.93'

PANOCHÉ
112.6 PXN
Chan 73
N36°42.93'-W120°46.72'
L-3, H-3

EBAYE LOSHN

CISKO

AVENAL
117.1 AVE
Chan 118
N35°38.82'-W119°58.72'
L-3-7, H-4

FELLOWS
117.5 FLW
Chan 122
N35°05.59'-W119°51.93'
L-3-7, H-4

NOTE: Chart not to scale.

TAKEOFF MINIMUMS

- Rwys 15, 33: NA- ATC.
- Rwy 10L: Standard with minimum climb of 340' per NM to 2300.
- Rwy 10R: Standard with minimum climb of 330' per NM to 2300.
- Rwy 12: Standard with minimum climb of 270' per NM to 1400.
- Rwys 28L/R, 30: Standard with minimum climb of 375' per NM to 2000.

- NOTE: RADAR required.
- NOTE: DME required.
- NOTE: Use the SILENT, HUSSH, or SUNNE DEPARTURE during the periods of 2200-0700 local in lieu of the OAKLAND DEPARTURE.

(NARRATIVE ON FOLLOWING PAGE)

OAKLAND FIVE DEPARTURE

SW-2, 09 SEP 2021 to 07 OCT 2021

SW-2, 09 SEP 2021 to 07 OCT 2021



DEPARTURE ROUTE DESCRIPTION

TAKEOFF RUNWAYS 10L/R: Climb on heading 098° for RADAR vectors to assigned route/fix, thence. . . .

TAKEOFF RUNWAY 12: Climb on heading 116° for RADAR vectors to assigned route/fix, thence. . . .

TAKEOFF RUNWAYS 28L/R: Climb on heading 278° for RADAR vectors to assigned route/fix. Cross 4 DME northwest of OAK VOR/DME at or above 1400 and at or below 2000, thence. . . .

TAKEOFF RUNWAY 30: Climb on heading 296° for RADAR vectors to assigned route/fix. Cross 4 DME northwest of OAK VOR/DME at or above 1400 and at or below 2000, thence. . . .

. . . .maintain ATC assigned altitude. Expect filed altitude ten minutes after departure.

LOST COMMUNICATIONS: If not in contact with departure control after reaching 5000', continue climb to assigned altitude and proceed direct to assigned route/fix.

SW-2, 09 SEP 2021 to 07 OCT 2021

SW-2, 09 SEP 2021 to 07 OCT 2021