

APP CRS	Rwy Idg	10000
296°	TDZE	9
	Apt Elev	9

RNAV (RNP) Z RWY 30

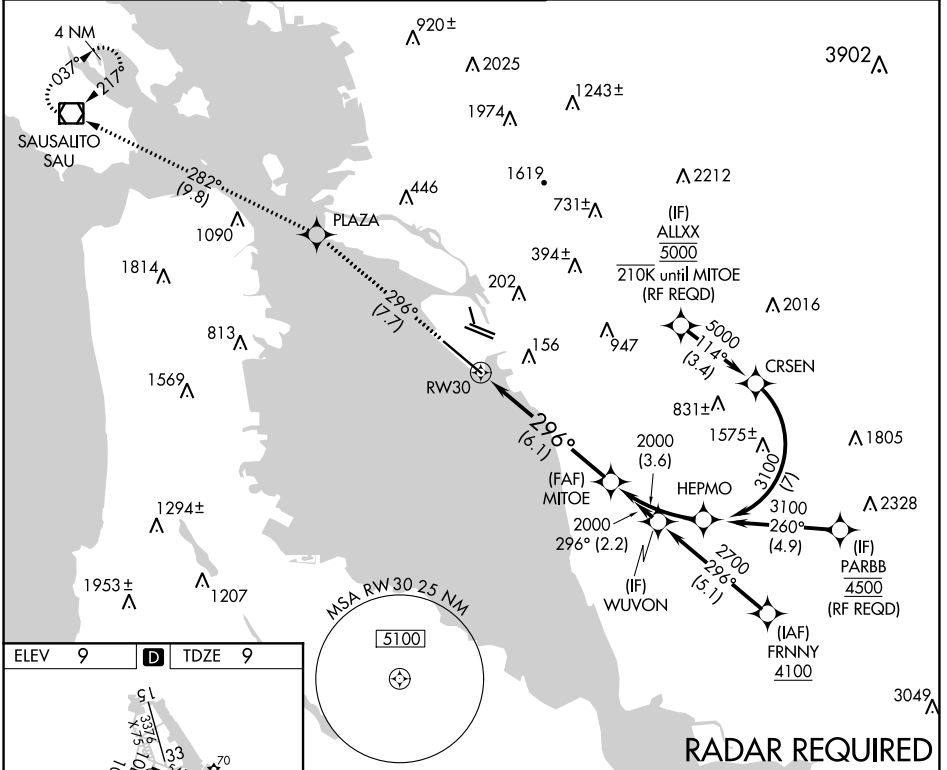
METRO OAKLAND INTL (OAK)

GPS required. For uncompensated Baro-VNAV systems, procedure NA below 1°C (34°F) or above 54°C (130°F). For inop ALS increase RNP 0.11 visibility all Cats to RVR 4000.

ALSF-2

D-ATIS	NORCAL APP CON	OAKLAND TOWER		GND CON	CLNC DEL	CPDLC
133.775	125.35 263.15	118.3 291.65	(Rwys 10L/R-28L/R, 15-33)	121.9	(Rwys 10L/R-28L/R, 15-33)	
		127.2 256.9	(Rwy 12-30)	121.75	(Rwy 12-30)	

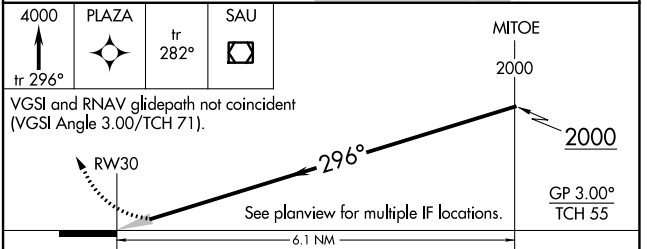
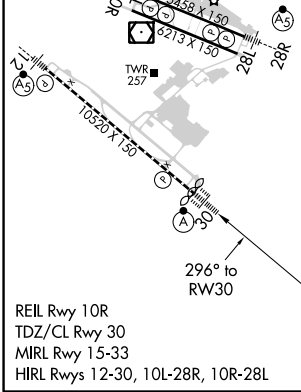
MISSED APPROACH: Climb to 4000 on track 296° to PLAZA and on track 282° to SAU VOR/DME and hold, continue climb-in-hold to 4000.



SW-2, 09 SEP 2021 to 07 OCT 2021

SW-2, 09 SEP 2021 to 07 OCT 2021

ELEV	9	D	TDZE	9
------	---	----------	------	---



CATEGORY	A	B	C	D
RNP 0.11 DA		267/24	258 (300-½)	
RNP 0.30 DA		317/24	308 (400-½)	

AUTHORIZATION REQUIRED