

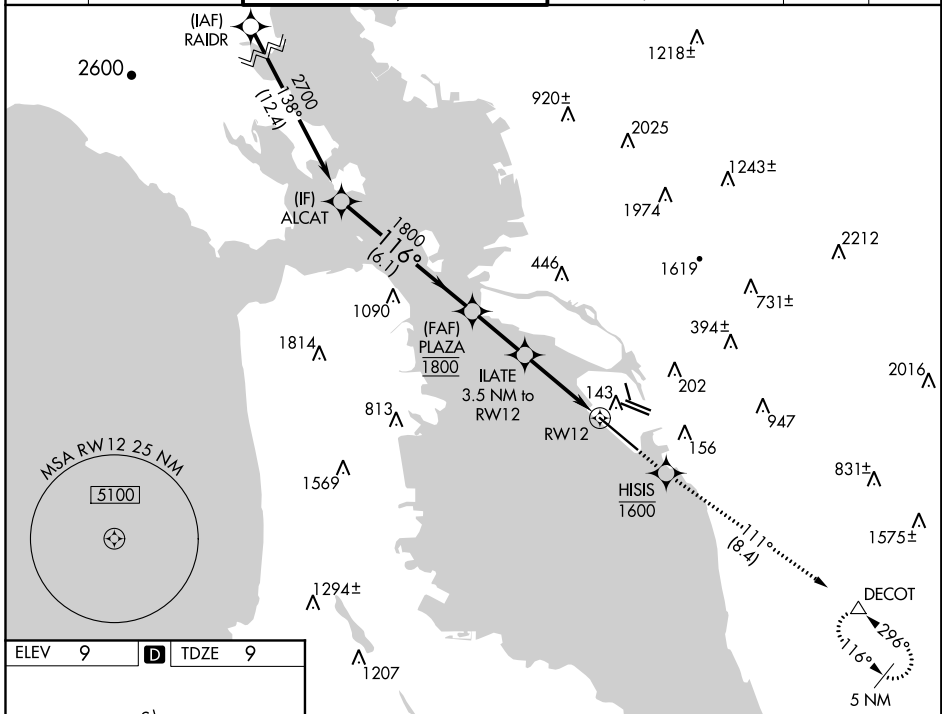
WAAS CH 86418 W12A	APP CRS 116°	Rwy Idg 10000 TDZE 9 Apt Elev 9
--	------------------------	--

RNAV (GPS) Y RWY 12

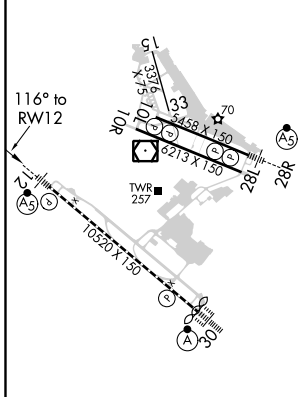
METRO OAKLAND INTL (OAK)

<p>▼ For uncompensated Baro-VNAV systems, LNAV/VNAV NA below 0°C (32°F) or above 54°C (130°F). DME/DME RNP-0.3 NA. #RVR 1800 authorized with use of FD or AP or HUD to DA.</p>	<p>MALSR</p>	<p>MISSED APPROACH: Climb direct HISIS to cross HISIS at or below 1600, then climb to 5400 on track 111° to DECOT and hold, continue climb-in-hold to 5400.</p>
---	--------------	---

D-ATIS 133.775	NORCAL APP CON 125.35 263.15	OAKLAND TOWER 118.3 291.65 (Rwys 10L/R-28L/R, 15-33) 127.2 256.9 (Rwy 12-30)	GND CON 121.9 (Rwys 10L/R-28L/R, 15-33) 121.75 (Rwy 12-30)	CLNC DEL 121.1	CPDLC
--------------------------	--	--	--	--------------------------	-------



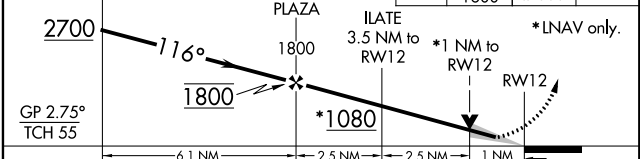
ELEV 9	D	TDZE 9
--------	----------	--------



REIL Rwy 10R
TDZ/CL Rwy 30
MIRL Rwy 15-33
HIRL Rwys 12-30, 10L-28R, 10R-28L

VGSI and RNAV glidepath not coincident (VGSI Angle 2.75/TCH 70).

HISIS	5400	DECOT
↑	↑	△
1600	tr 111°	



CATEGORY	A	B	C	D
LPV DA#		209/24	200 (200-½)	
LNAV/ VNAV DA		304/27	295 (300-⅝)	
LNAV MDA	360/24	351 (400-½)	360/30	351 (400-⅝)
C CIRCLING	560-1	551 (600-1)	660-1¾ 651 (700-1¾)	1380-3 1371 (1400-3)

SW-2, 09 SEP 2021 to 07 OCT 2021

SW-2, 09 SEP 2021 to 07 OCT 2021