

RNAV (GPS) Y RWY 28L

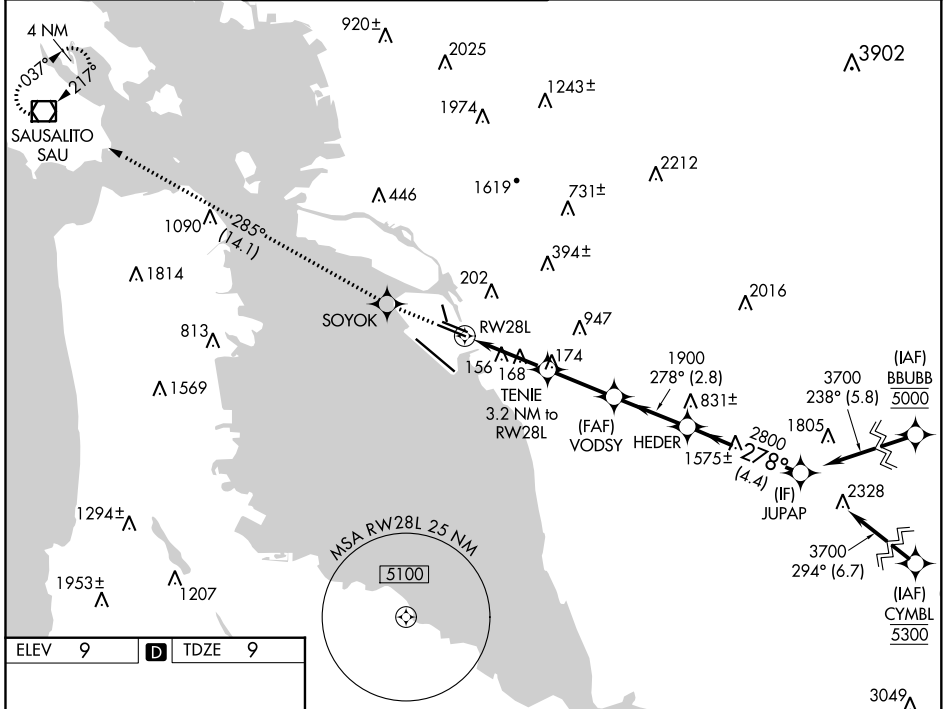
METRO OAKLAND INTL (OAK)

WAAS CH 72700 W28A	APP CRS 278°	Rwy Idg TDZE Apt Elev	6213 9 9
--	------------------------	-----------------------------	-------------------------------------

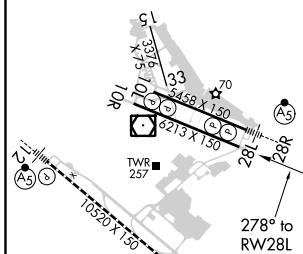
▼ For uncompensated Baro-VNAV systems, LNAV/VNAV NA below 0°C (32°F) or above 54°C (130°F).
▲ DME/DME RNP-0.3 NA.

MISSED APPROACH: Climb to 4000 direct SOYOK and on track 285° to SAU VOR/DME and hold, continue climb-in-hold to 4000.

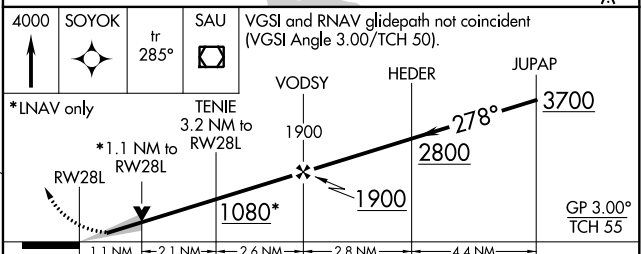
D-ATIS 133.775	NORCAL APP CON 125.35 263.15	OAKLAND TOWER 118.3 291.65 (Rwys 10L/R-28L/R, 15-33) 127.2 256.9 (Rwy 12-30)	GND CON 121.9 (Rwys 10L/R-28L/R, 15-33) 121.75 (Rwy 12-30)	CLNC DEL 121.1	CPDLC
--------------------------	--	--	--	--------------------------	-------



ELEV	9	D	TDZE	9
------	---	----------	------	---



REIL Rwy 10R
 TDZ/CL Rwy 30
 MIRL Rwy 15-33
 HIRL Rwys 12-30, 10L-28R, 10R-28L



CATEGORY	A		B	C	D
	LPV DA	209/40		200 (200-¾)	
LNAV/VNAV DA	387-1¼		378 (400-1¼)		
LNAV MDA	420/55	411 (500-1)	420/60	411 (500-1¼)	
C CIRCLING	560-1	551 (600-1)	660-1¾ 651 (700-1¾)	1400-3	1391 (1400-3)

SW-2, 09 SEP 2021 to 07 OCT 2021

SW-2, 09 SEP 2021 to 07 OCT 2021