


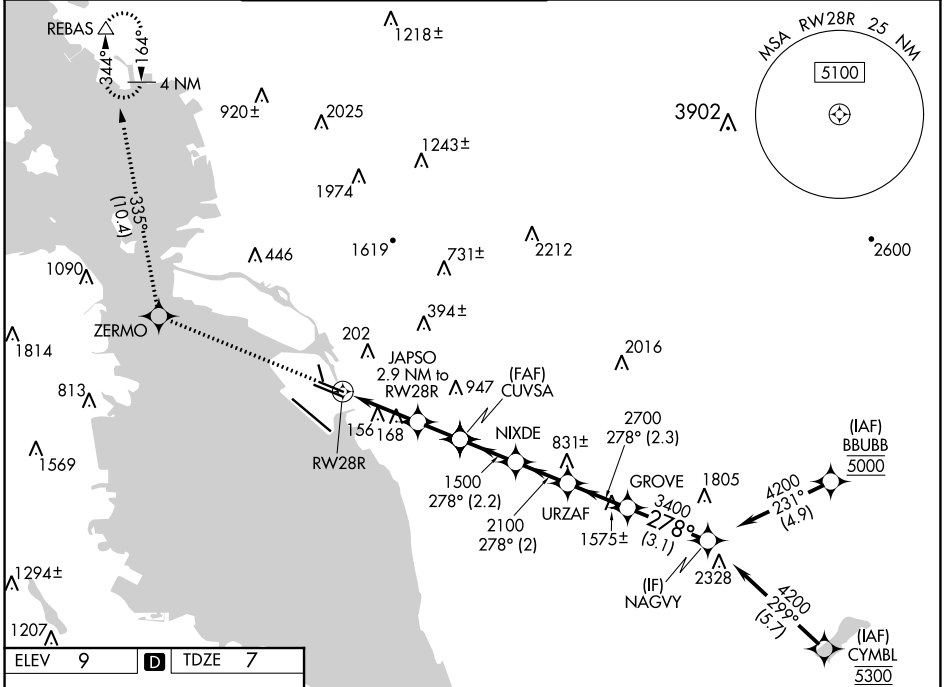
WAAS CH <b>42535</b> <b>W28B</b>	APP CRS <b>278°</b>	Rwy Idg TDZE Apt Elev	<b>5458</b> <b>7</b> <b>9</b>
--	------------------------	-----------------------------	-------------------------------------

# RNAV (GPS) Y RWY 28R

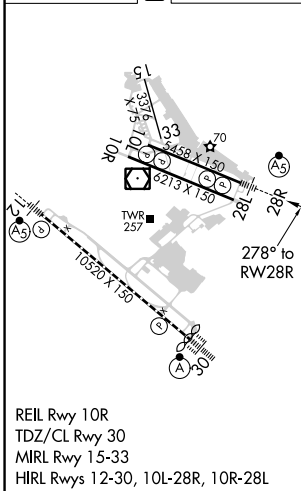
METRO OAKLAND INTL (OAK)

<p><b>▼</b> DME/DME RNP-0.3 NA. For uncompensated Baro-VNAV systems, LNAV/VNAV NA below 1°C (34°F) or above 54°C (130°F). # RVR 1800 authorized with use of FD or AP or HUD to DA.</p>	<p><b>MALSR</b></p> 	<p><b>MISSED APPROACH:</b> Climb to 3000 direct ZERMO and on track 335° to REBAS and hold.</p>
--	---	--

D-ATIS <b>133.775</b>	NORCAL APP CON <b>125.35 263.15</b>	<p><b>OAKLAND TOWER</b> <b>118.3 291.65</b> (Rwys 10L/R-28L/R, 15-33) <b>127.2 256.9</b> (Rwy 12-30)</p>	<p><b>GND CON</b> <b>121.9</b> (Rwys 10L/R-28L/R, 15-33) <b>121.75</b> (Rwy 12-30)</p>	CLNC DEL <b>121.1</b>	CPDLC
--------------------------	--	--	--	--------------------------	-------



ELEV 9	<b>D</b>	TDZE 7
--------	----------	--------



3000	ZERMO	tr	REBAS				
		335°	△				
*LNAV only.							
		JAPSO	CUVSA	NIXDE	URZAF	GROVE	NAGVY
		2.9 NM to RWY 28R	1500			278°	4200
		*1.2 NM to RWY 28R	980*	2100	2700	3400	
							GP 3.00° TCH 53
		1.2 NM	1.7 NM	1.6 NM	2.2 NM	2.3 NM	3.1 NM
CATEGORY	A		B		C		D
LPV DA #			207/24		200 (200-½)		
LNAV/VNAV DA			387/40		380 (400-¾)		
LNAV MDA	440/24		433 (500-½)		440/40		433 (500-¾)
<b>C</b> CIRCLING	560-1		551 (600-1)		660-1¾ 651 (700-1¾)		1400-3 1391 (1400-3)

SW-2, 09 SEP 2021 to 07 OCT 2021

SW-2, 09 SEP 2021 to 07 OCT 2021