

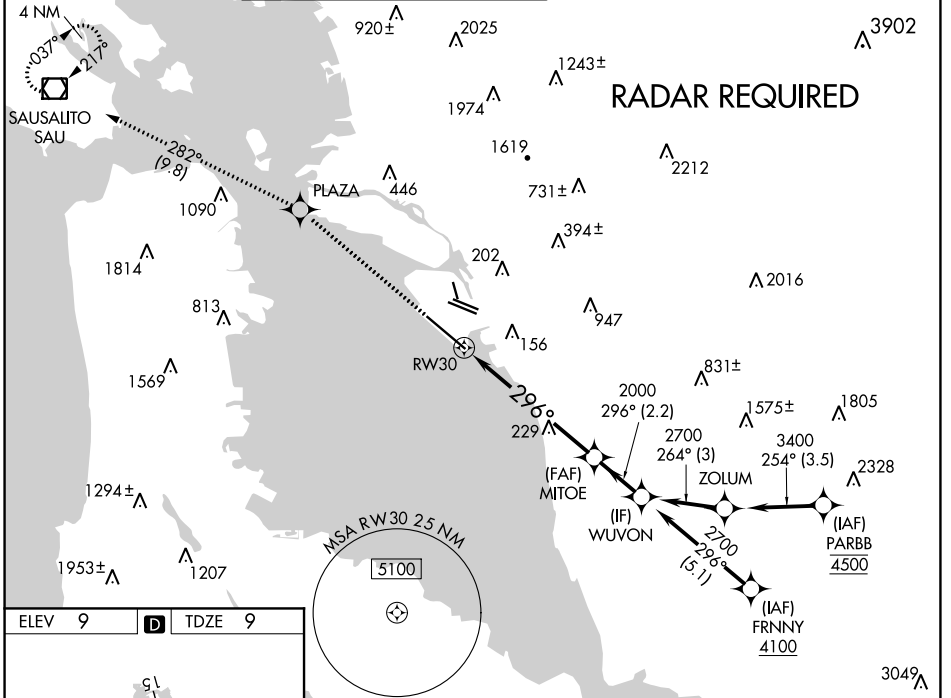
WAAS CH 93535 W30A	APP CRS 296°	Rwy Idg 10000 TDZE 9 Apt Elev 9
--	------------------------	--

RNAV (GPS) Y RWY 30

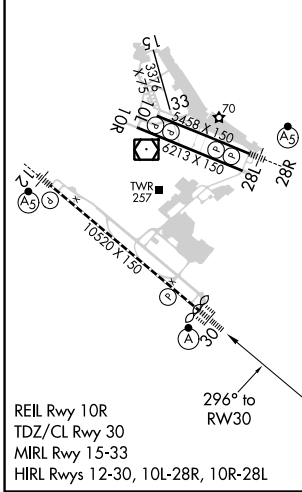
METRO OAKLAND INTL (OAK)

For uncompensated Baro-VNAV systems, LNAV/VNAV NA below 1°C (34°F) or above 54°C (130°F). DME/DME RNP-0.3 NA. For inop ALS, increase LNAV/VNAV all Cats visibility to RVR 4500 and LNAV Cat C/D visibility to 1 3/8 SM.		MISSED APPROACH: Climb to 4000 direct PLAZA and on track 282° to SAU VOR/DME and hold, continue climb-in-hold to 4000.

D-ATIS 133.775	NORCAL APP CON 125.35 263.15	OAKLAND TOWER 118.3 291.65 (Rwys 10L/R-28L/R, 15-33) 127.2 256.9 (Rwy 12-30)	GND CON 121.9 (Rwys 10L/R-28L/R, 15-33) 121.75 (Rwy 12-30)	CLNC DEL 121.1	CPDLC
--------------------------	--	--	--	--------------------------	-------



ELEV 9	D	TDZE 9
--------	----------	--------



4000	PLAZA	tr 282°	SAU	VGSI and RNAV glidepath not coincident (VGSI Angle 3.00/TCH 71)	WUVON
*LNAV only		*1.6 NM to RWY 30		2000	
RWY 30		4.5 NM		2700	
1.6 NM		2.2 NM		GP 3.00° TCH 55	
CATEGORY	A	B	C	D	
LPV DA		209/18	200 (200-1/2)		
LNAV/VNAV DA		283/24	274 (300-1/2)		
LNAV MDA	580/24	571 (600-1/2)	580-1 1/4	571 (600-1 1/4)	
C CIRCLING	580-1	571 (600-1)	660-1 3/4	1400-3	651 (700-1 3/4)
					1391 (1400-3)

SW-2, 09 SEP 2021 to 07 OCT 2021

SW-2, 09 SEP 2021 to 07 OCT 2021