

(SALAD5.SALAD) 21168  
**SALAD FIVE DEPARTURE**

AL-294 (FAA)

METRO OAKLAND INTL (OAK)  
 OAKLAND, CALIFORNIA

D-ATIS  
 133.775  
 CLNC DEL  
 121.1  
 CPDLC  
 GND CON  
 121.9 (Rwys 28L/R)  
 OAKLAND TOWER  
 118.3 291.65 (Rwys 28L/R)  
 NORCAL DEP CON  
 120.9 323.2

**TOP ALTITUDE:  
 ASSIGNED BY ATC**

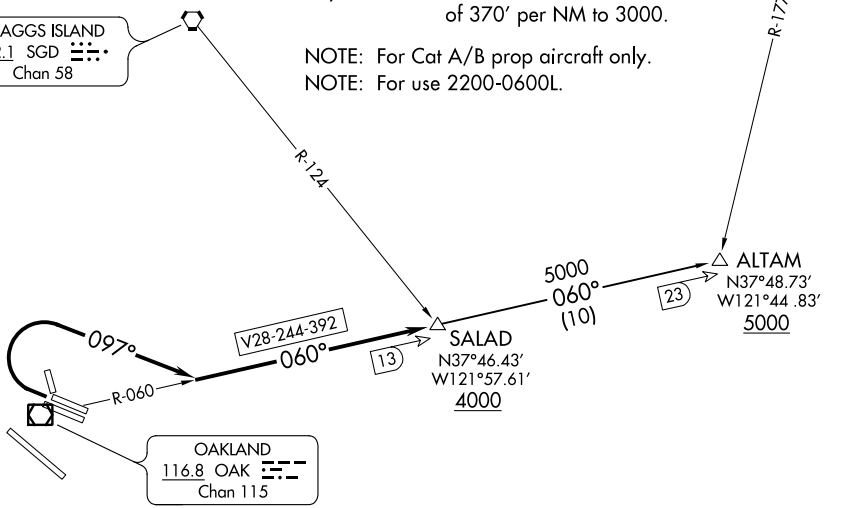
SACRAMENTO  
 115.2 SAC  
 Chan 99

**TAKEOFF MINIMUMS**

Rwys 10L, 10R, 12, 15, 30, 33: NA-ATC.  
 Rwys 28L, 28R: Standard with minimum climb  
 of 370' per NM to 3000.

NOTE: For Cat A/B prop aircraft only.  
 NOTE: For use 2200-0600L.

SCAGGS ISLAND  
 112.1 SGD  
 Chan 58



SW-2, 09 SEP 2021 to 07 OCT 2021

SW-2, 09 SEP 2021 to 07 OCT 2021

NOTE: Chart not to scale.

**DEPARTURE ROUTE DESCRIPTION**

TAKEOFF RUNWAYS 28 L/R: Climbing right turn heading 097° to intercept OAK VOR/DME R-060 to cross SALAD/OAK 13 DME at or above 4000, thence . . . .  
 . . . . on ALTAM transition. Maintain ATC assigned altitude. Expect filed altitude 10 minutes after departure.

ALTAM TRANSITION (SALAD5.ALTAM): From over SALAD on OAK R-060 to ALTAM.

**SALAD FIVE DEPARTURE**  
 (SALAD5.SALAD) 17AUG17

OAKLAND, CALIFORNIA  
 METRO OAKLAND INTL (OAK)