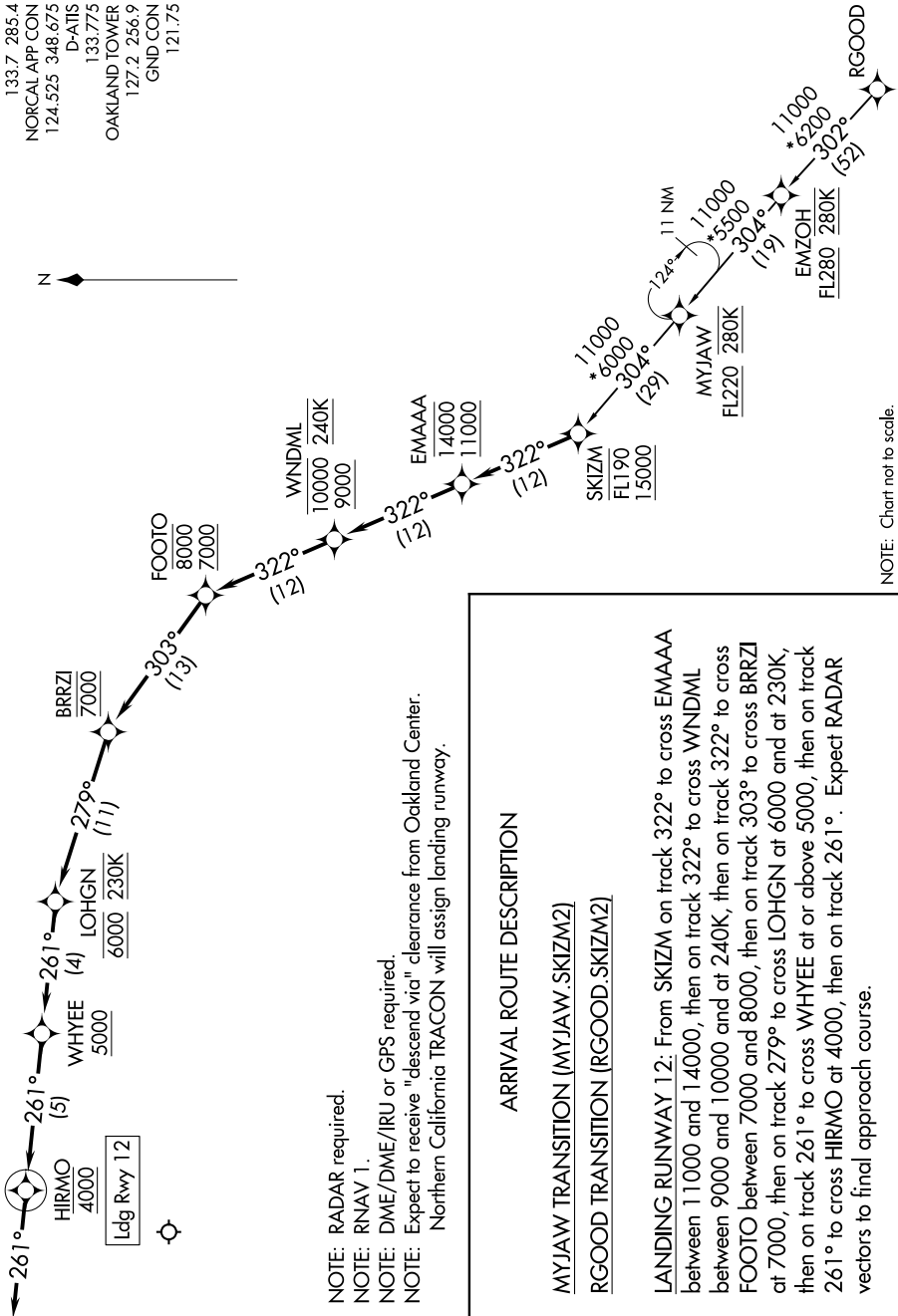


SW-2, 09 SEP 2021 to 07 OCT 2021

OAKLAND CENTER  
133.7 285.4  
NORCAL APP CON  
124.525 348.675  
D-AIIS  
133.775  
OAKLAND TOWER  
127.2 256.9  
GND CON  
121.75



NOTE: RADAR required.  
 NOTE: RNAV 1.  
 NOTE: DME/DME/IRU or GPS required.  
 NOTE: Expect to receive "descend via" clearance from Oakland Center.  
 Northern California TRACON will assign landing runway.

**ARRIVAL ROUTE DESCRIPTION**

MYJAW TRANSITION (MYJAW.SKIZM2)  
RGOOD TRANSITION (RGOOD.SKIZM2)

**LANDING RUNWAY 12:** From SKIZM on track 322° to cross EMAAA between 11000 and 14000, then on track 322° to cross WNDML between 9000 and 10000 and at 240K, then on track 322° to cross FOOTO between 7000 and 8000, then on track 303° to cross BRRZI at 7000, then on track 279° to cross LOHGN at 6000 and at 230K, then on track 261° to cross WHYEE at or above 5000, then on track 261° to cross HIRMO at 4000, then on track 261°. Expect RADAR vectors to final approach course.

NOTE: Chart not to scale.

SW-2, 09 SEP 2021 to 07 OCT 2021