

HOWRY TWO ARRIVAL
(HOWRY.HOWRY2) 15SEP16

(HOWRY.HOWRY2) 20198

AL-304 (FAA)

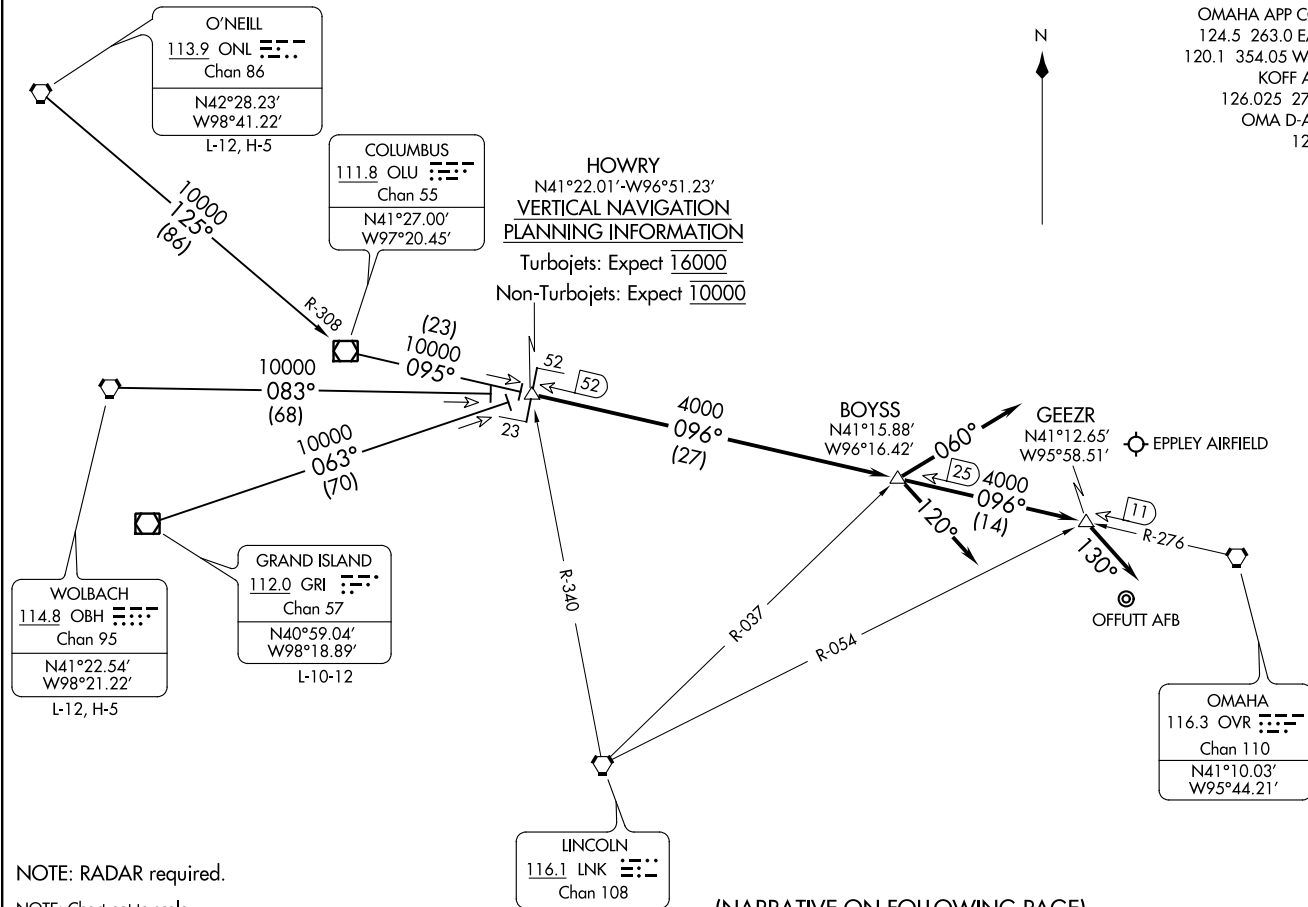
OMAHA, NEBRASKA

OMAHA APP CON
124.5 263.0 EAST
120.1 354.05 WEST
KOFF ATIS
126.025 273.5
OMA D-ATIS
120.4



HOWRY
N41°22.01'-W96°51.23'
VERTICAL NAVIGATION
PLANNING INFORMATION

Turbojets: Expect 16000
Non-Turbojets: Expect 10000



NOTE: RADAR required.

NOTE: Chart not to scale.

(NARRATIVE ON FOLLOWING PAGE)

OMAHA, NEBRASKA

ARRIVAL ROUTE DESCRIPTION

GRAND ISLAND TRANSITION (GRI.HOWRY2): From over GRI VOR/DME via GRI R-063 to HOWRY INT.

O'NEILL TRANSITION (ONL.HOWRY2): From over ONL VORTAC via ONL R-125 and OLU R-308 to OLU VOR/DME, then via OLU R-095 to HOWRY INT.

WOLBACH TRANSITION (OBH.HOWRY2): From over OBH VORTAC via OBH R-083 to HOWRY INT.

From over HOWRY INT via OVR R-276 to BOYSS INT/OVR 25 DME. Thence

. . . . LANDING EPPLEY AIRFIELD:

RUNWAYS 14L/14R/18: Depart BOYSS INT via heading 060°. Expect RADAR vectors to final approach course.

RUNWAYS 32L/32R/36: Depart BOYSS INT via OVR R-276 to GEEZR INT/OVR 11 DME, then heading 130°. Expect RADAR vectors to final approach course.

. . . . LANDING OFFUTT AFB:

RUNWAY 12: Expect RADAR vectors to final approach course.

RUNWAY 30: Depart BOYSS INT via heading 120°. Expect RADAR vectors to final approach course.

NC-2, 09 SEP 2021 to 07 OCT 2021

NC-2, 09 SEP 2021 to 07 OCT 2021