

APP CRS 142°	Rwy Idg TDZE Apt Elev	8500 984 985
------------------------	-----------------------------	---

RNAV (RNP) Z RWY 14L

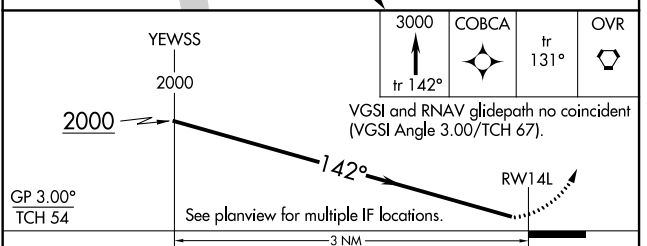
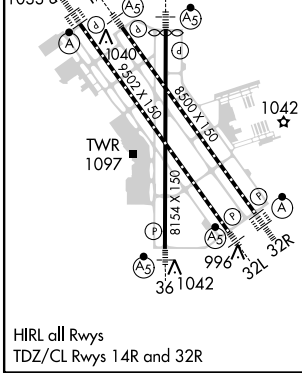
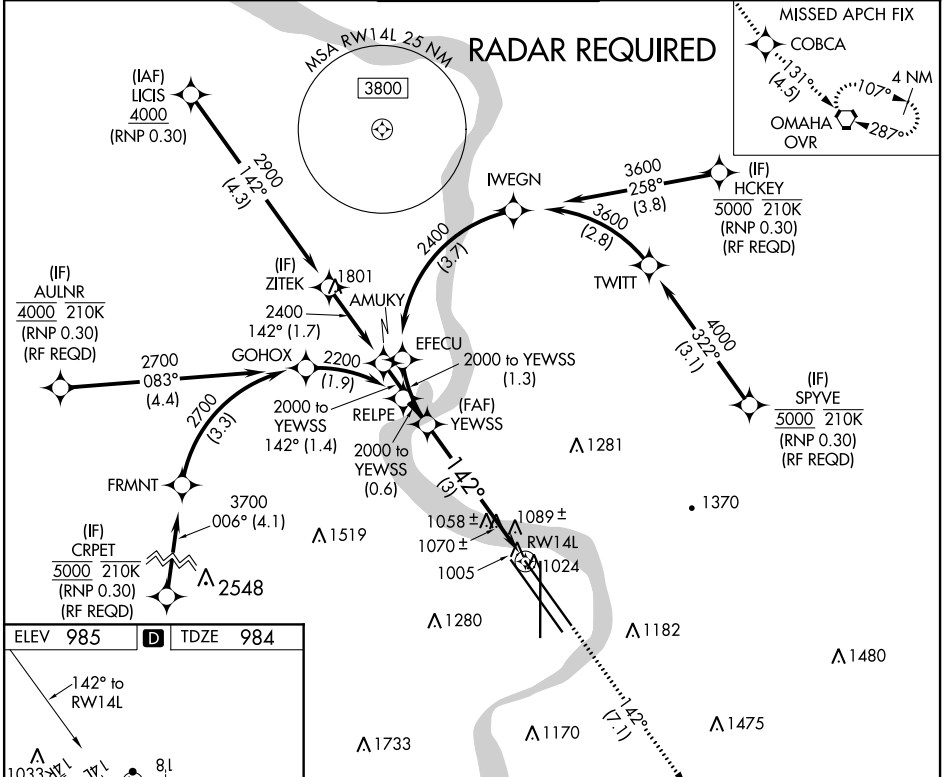
EPPLEY AIRFIELD (OMA)

▼ For uncompensated Baro-VNAV systems, procedure NA below -17°C (2°F) or above 54°C (130°F). For inoperative ALS, increase RNP 0.15 all Cats visibility to 1 ½ and RNP 0.30 all Cats visibility to 1 ¾. GPS required.

MALSRL
AS

MISSED APPROACH: Climb to 3000 on track 142° to COBCA and on track 131° to OVR VORTAC and hold.

D-ATIS 120.4	OMAHA APP CON 120.1 354.05	OMAHA TOWER 132.1 256.9	GND CON 121.9	CLNC DEL 119.9
------------------------	--------------------------------------	-----------------------------------	-------------------------	--------------------------



GP 3.00° TCH 54	3000	COBCA	OVR	
	↑ tr 142°	★	tr 131°	
			◻	
CATEGORY	A	B	C	D
RNP 0.15 DA		1335/40	351 (400-¾)	
RNP 0.30 DA		1395/45	411 (500-¾)	

AUTHORIZATION REQUIRED

NC-2, 09 SEP 2021 to 07 OCT 2021

NC-2, 09 SEP 2021 to 07 OCT 2021