

APP CRS	Rwy Idg	8013
178°	TDZE	982
	Apt Elev	985

RNAV (RNP) Z RWY 18

EPPLEY AIRFIELD (OMA)

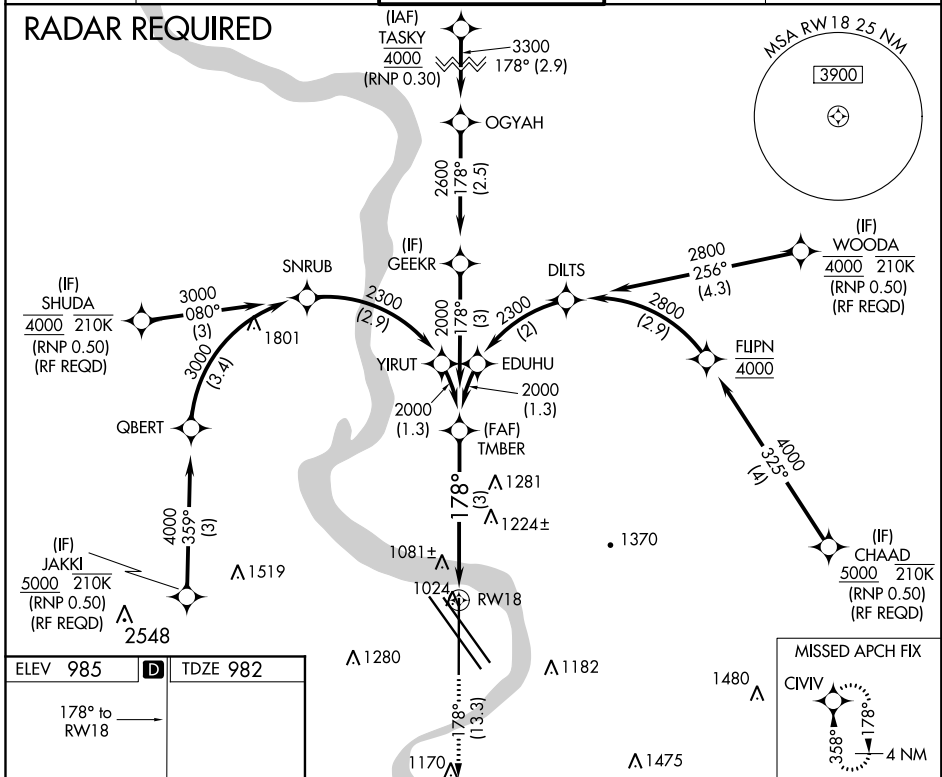
▽ For uncompensated Baro-VNAV systems, procedure NA below -17°C (2°F) or above 54°C (130°F). For inoperative ALS, increase RNP 0.15 all Cats visibility to 1½ and RNP 0.30 all Cats visibility to 2. GPS required.



MISSED APPROACH: Climb to 3000 on track 178° to CIVIL and hold.

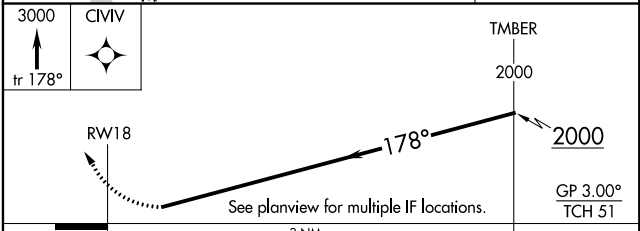
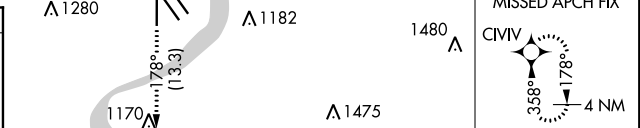
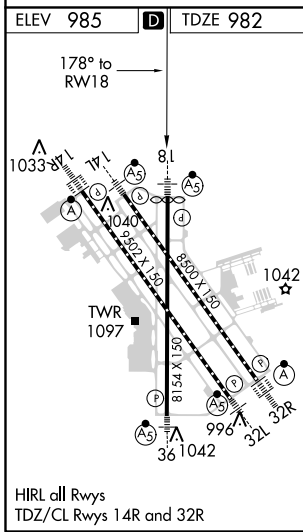
D-ATIS	OMAHA APP CON	OMAHA TOWER	GND CON	CLNC DEL
120.4	120.1 354.05	132.1 256.9	121.9	119.9

RADAR REQUIRED



NC-2, 09 SEP 2021 to 07 OCT 2021

NC-2, 09 SEP 2021 to 07 OCT 2021



CATEGORY	A	B	C	D
RNP 0.15 DA		1341/40	359 (400-¾)	
RNP 0.30 DA		1576-1½	594 (600-1½)	

AUTHORIZATION REQUIRED