


APP CRS	Rwy Idg	8153
358°	TDZE	979
	Apt Elev	985

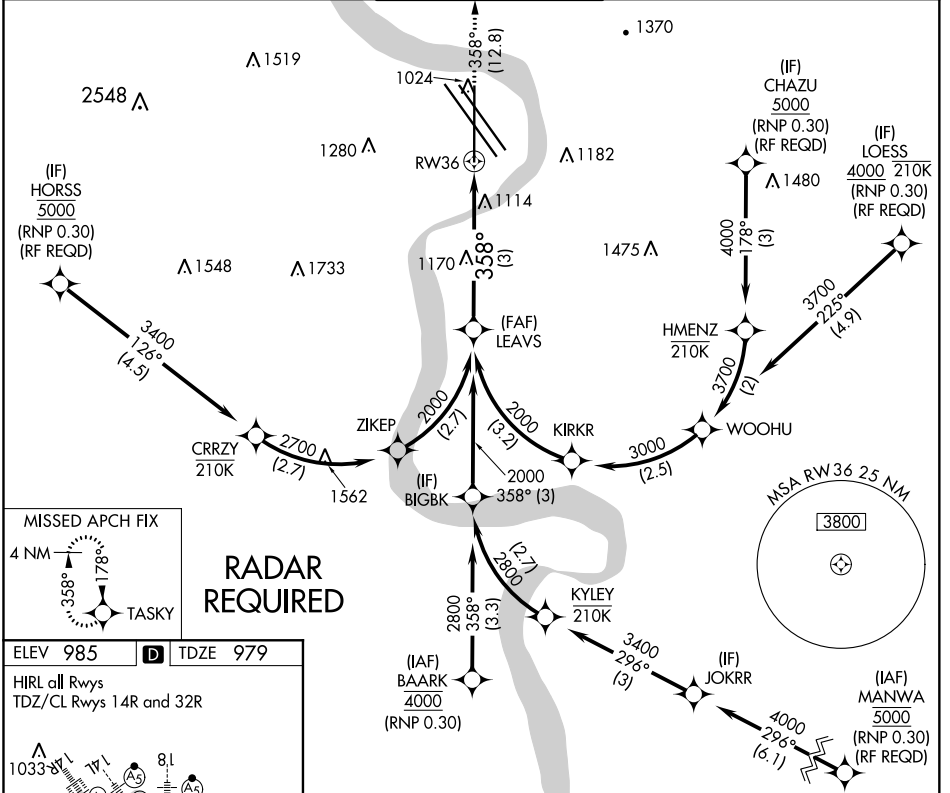
RNAV (RNP) Z RWY 36

EPPLEY AIRFIELD (OMA)

▼ For uncompensated Baro-VNAV systems, procedure NA below -19°C (-2°F) or above 54°C (130°F). When VGSI inop, procedure NA at night. For inop ALS, increase RNP 0.30 all Cats visibility to 1½ SM. GPS required.

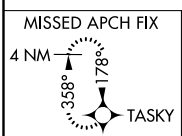
MALSRR  MISSED APPROACH: Climb to 3000 on track 358° to TASKY and hold.

D-ATIS 120.4	OMAHA APP CON 120.1 354.05	OMAHA TOWER 132.1 256.9	GND CON 121.9	CLNC DEL 119.9
------------------------	--------------------------------------	-----------------------------------	-------------------------	--------------------------

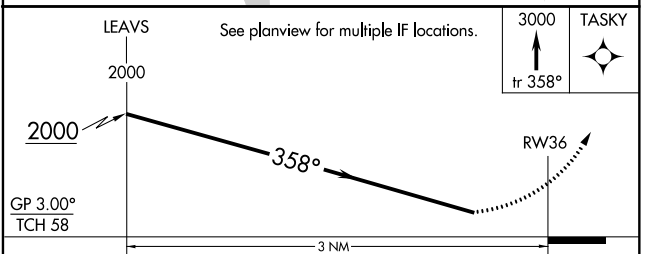
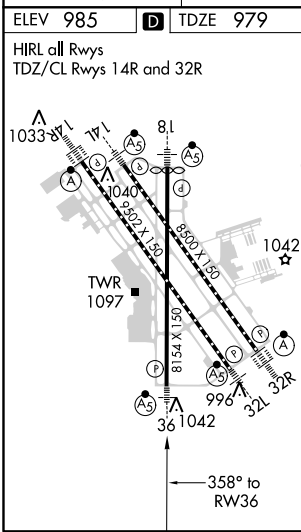


NC-2, 09 SEP 2021 to 07 OCT 2021

NC-2, 09 SEP 2021 to 07 OCT 2021



RADAR REQUIRED



CATEGORY	A	B	C	D
RNP 0.30 DA	1425-1 446 (500-1)			

AUTHORIZATION REQUIRED