

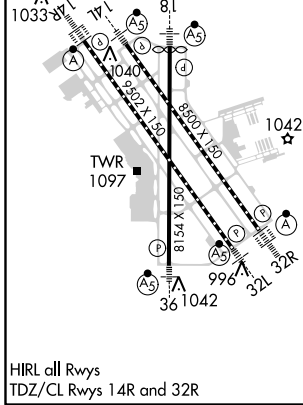
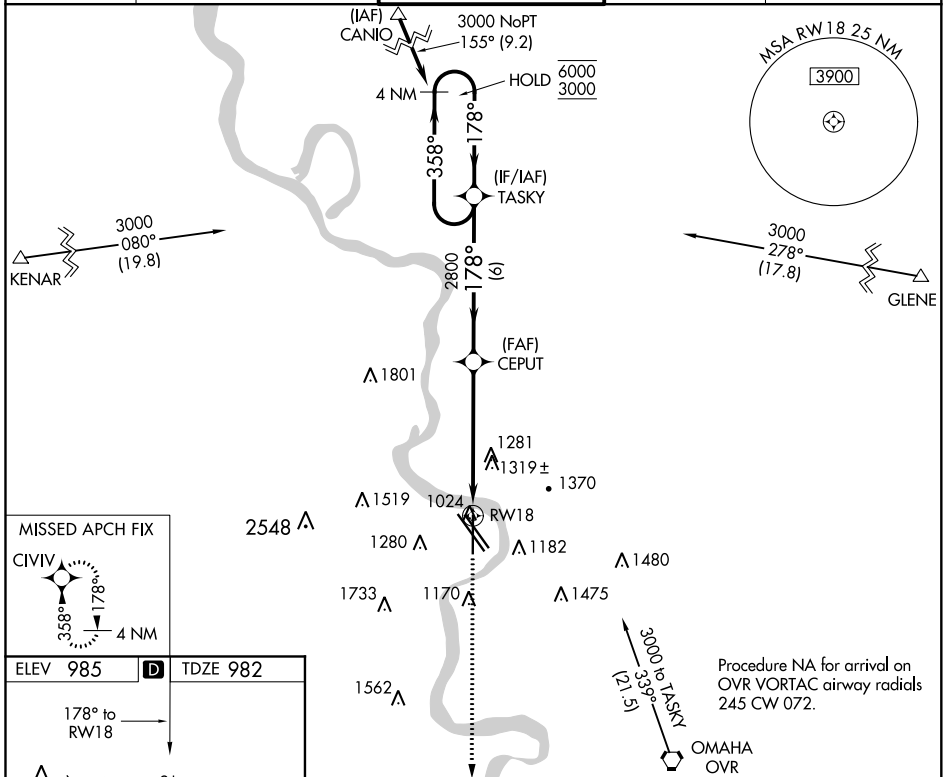
RNAV (GPS) Y RWY 18

EPPLEY AIRFIELD (OMA)

WAAS CH 65617 W18A	APP CRS 178°	Rwy Idg TDZE 982 Apt Elev 985	8013
--	------------------------	---	-------------

RNP APCH.	MALSR	MISSED APPROACH: Climb to 3000 direct CIVIV and hold.
For uncompensated Baro-VNAV systems, procedure NA below -19°C or above 54°C. # RVR 1800 authorized with use of FD or AP or HUD to DA.		

D-ATIS 120.4	OMAHA APP CON 120.1 354.05	OMAHA TOWER 132.1 256.9	GND CON 121.9	CLNC DEL 119.9
------------------------	--------------------------------------	-----------------------------------	-------------------------	--------------------------



ELEV 985	TDZE 982				
178° to RW18					
4 NM Holding Pattern 6000 ← 358° 3000 → 178°		TASKY 2800		CEPUT 2800	
GP 3.00° TCH 52		* 1.5 NM to RW18		* LNAV only	
6 NM		4.1 NM		1.5 NM	
CATEGORY	A	B	C	D	
LPV DA#		1182/24	200 (200-½)		
LNAV/VNAV DA		1540/60	558 (600-1¼)		
LNAV MDA	1520/24	538 (600-½)	1520/55	538 (600-1)	
CIRCLING	1660-1 675 (700-1)	1680-1 695 (700-1)	2000-3 1015 (1100-3)	2040-3 1055 (1100-3)	

NC-2, 09 SEP 2021 to 07 OCT 2021

NC-2, 09 SEP 2021 to 07 OCT 2021