

NORDY-ONE DEPARTURE (NORDY1 • NORDY)

AL-321 [USAF]

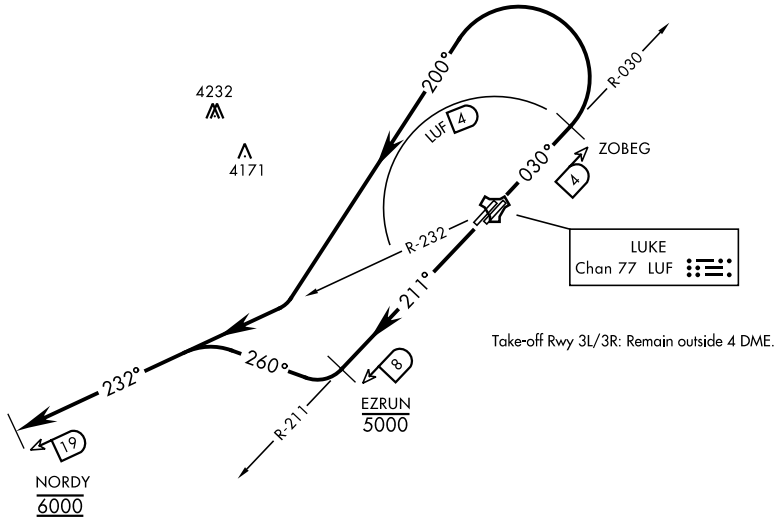
LUKE AFB (KLUF)

GLENDALE, ARIZONA

ATIS ★ 134.925 269.9
 CLNC DEL
 126.25 273.475
 GND CON
 133.175 335.8
 LUKE TOWER ★
 119.1 379.9
 LUKE DEP CON
 118.15 363.125

Rwy	Knots	60	120	180	240	300	360
3L/R ★	V/V(fpm)	350	700	1050	1400	1750	2100
21L/R †	V/V(fpm)	280	560	840	1120	1400	1680

★ Minimum Climb Rate to 6000
 † ATC Climb Rate to 6000



SW-4, 09 SEP 2021 to 07 OCT 2021

SW-4, 09 SEP 2021 to 07 OCT 2021

RADAR REQUIRED

4276
 ▲

DEPARTURE ROUTE DESCRIPTION

TAKE-OFF RWY 3L/R: Climb tracking 030°. Abeam LUF TACAN R-030/4 DME (ZOBEG) turn left on a track of 200° to intercept and proceed via LUF R-232 to 19 DME (NORDY). Remain outside LUF 4 DME. Then via (assigned route/stereo). Cross NORDY at and maintain 6000 (or as assigned by ATC).

TAKE-OFF RWY 21L/R: Climb tracking 211°. Abeam LUF TACAN R-211/8 DME (EZRUN) turn right on a track of 260° to intercept and proceed via LUF R-232 to 19 DME (NORDY). Then via (assigned route/stereo). Cross 8 DME at or below 5000, cross NORDY at and maintain 6000 (or as assigned by ATC).

NORDY-ONE DEPARTURE (NORDY1 • NORDY)

GLENDALE, ARIZONA
 LUKE AFB (KLUF)