

WEST VALLEY-ONE DEPARTURE (WESTV1 • LUF)

LUKE AFB (KLUF)

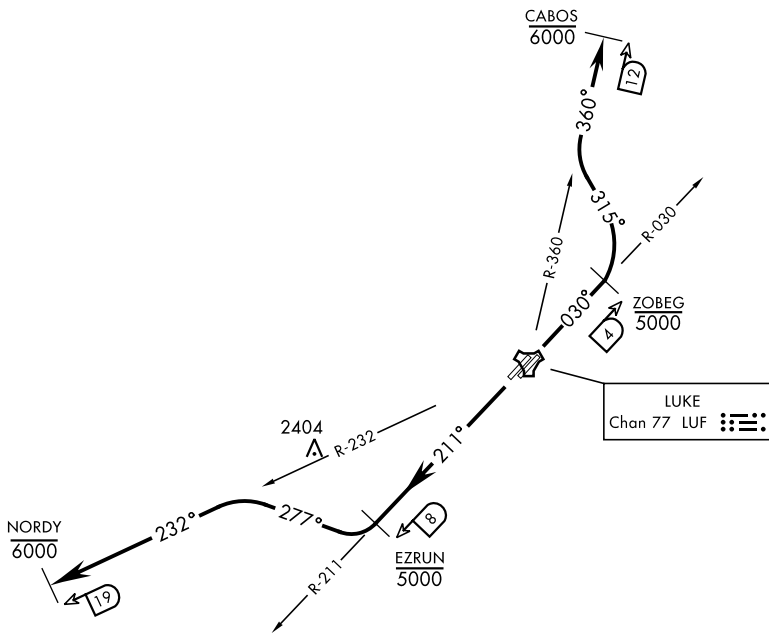
GLENDALE, ARIZONA

ATIS ★ 134.925 269.9
 CLNC DEL
 126.25 273.475
 GND CON
 133.175 335.8
 TOWER ★
 119.1 379.9
 LUKE DEP CON
 118.15 363.125

AL-321 [USAF]

Rwy	Knots	60	120	180	240	300	360
3L/R	V/V(fpm)	330	660	990	1320	1650	1980
21L/R	V/V(fpm)	250	500	750	1000	1250	1500

Minimum Climb Rate to 6000



DEPARTURE ROUTE DESCRIPTION

TAKE-OFF RWY 3L: Climb on track 031°, thence...

TAKE-OFF RWY 3R: Climb on track 029°, thence...

Intercept LUF TACAN R-030 to LUF 4 DME (ZOBEG), then turn left on track 315° to intercept LUF R-360 to 12 DME (CABOS), then via (assigned route/stereo). Cross ZOBEG at or below 5000, cross CABOS at or below 6000, then as directed by ATC.

TAKE-OFF RWY 21L: Climb on track 212°, thence...

TAKE-OFF RWY 21R: Climb on track 211°, thence...

Intercept LUF TACAN R-211 to LUF 8 DME (EZRUN), then turn right on track 277° to intercept LUF R-232 to LUF 19 DME (NORDY), then via (assigned route/stereo). Cross EZRUN at or below 5000. Cross NORDY at or below 6000, then as directed by ATC.

WEST VALLEY-ONE DEPARTURE (WESTV1 • LUF)

GLENDALE, ARIZONA

LUKE AFB (KLUF)