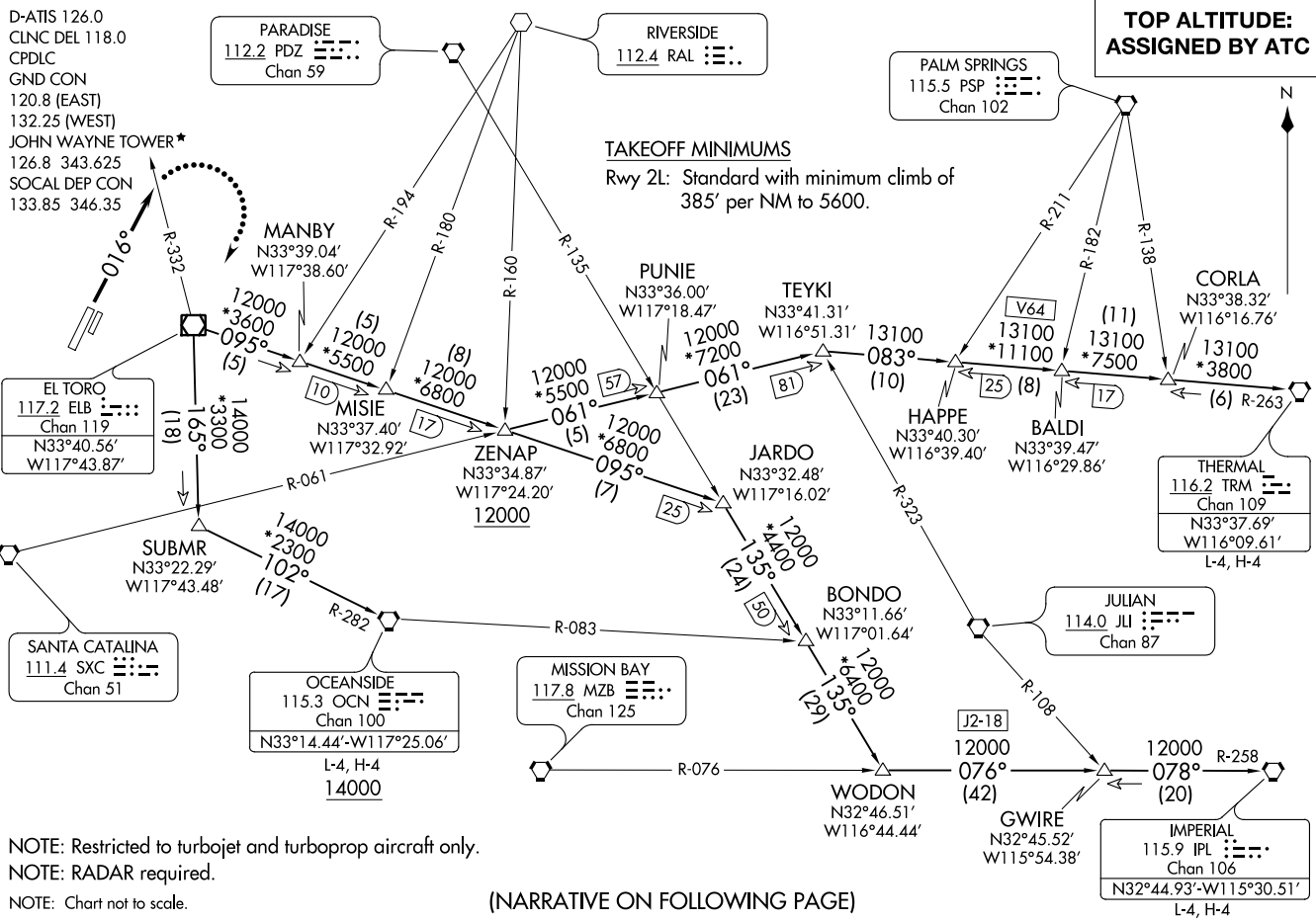


EL TORO FOUR DEPARTURE
(ELB4,ELB) 08JAN15

JOHN WAYNE/ORANGE COUNTY (SNA)
SANTA ANA, CALIFORNIA

(ELB4,ELB) 21168
EL TORO FOUR DEPARTURE

AL-377 (FAA)
JOHN WAYNE/ORANGE COUNTY (SNA)
SANTA ANA, CALIFORNIA



NOTE: Restricted to turbojet and turboprop aircraft only.
 NOTE: RADAR required.
 NOTE: Chart not to scale.

(NARRATIVE ON FOLLOWING PAGE)



DEPARTURE ROUTE DESCRIPTION

TAKEOFF RUNWAY 2L: Climb heading 016° for vectors to ELB VOR/DME, thence
. . . . (transition) or (assigned route). Expect filed altitude ten minutes after departure.

LOST COMMUNICATIONS: If not in contact with departure control by ELB R-332,
turn right direct ELB VOR/DME, climb to 7000 and proceed on assigned transition
or route. Climb to filed altitude ten minutes after departure.

IMPERIAL TRANSITION (ELB4.IPL): From over ELB VOR/DME on ELB R-095
to JARDO, then on PDZ R-135 to WODON, then on MZB R-076 and IPL R-258
to GWIRE, then on IPL R-258 to IPL VORTAC.

OCEANSIDE TRANSITION (ELB4.OCN): From over ELB VOR/DME on ELB R-165
to SUBMR, then on OCN R-282 to OCN VORTAC.

THERMAL TRANSITION (ELB4.TRM): From over ELB VOR/DME on ELB R-095
to ZENAP, then on SXC R-061 to TEYKI, then on TRM R-263 to TRM VORTAC.

SW-3, 09 SEP 2021 to 07 OCT 2021

SW-3, 09 SEP 2021 to 07 OCT 2021