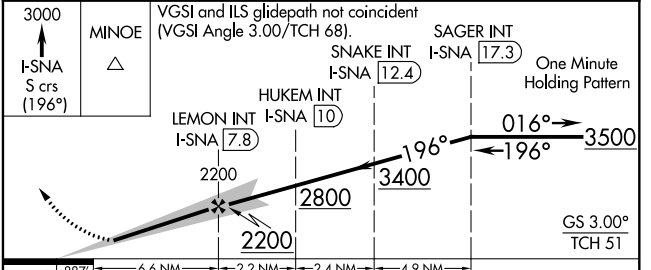
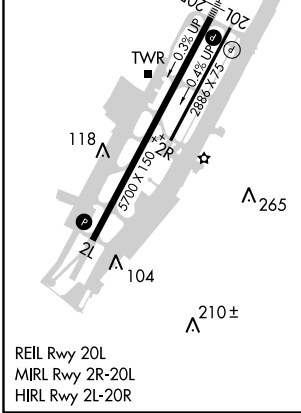
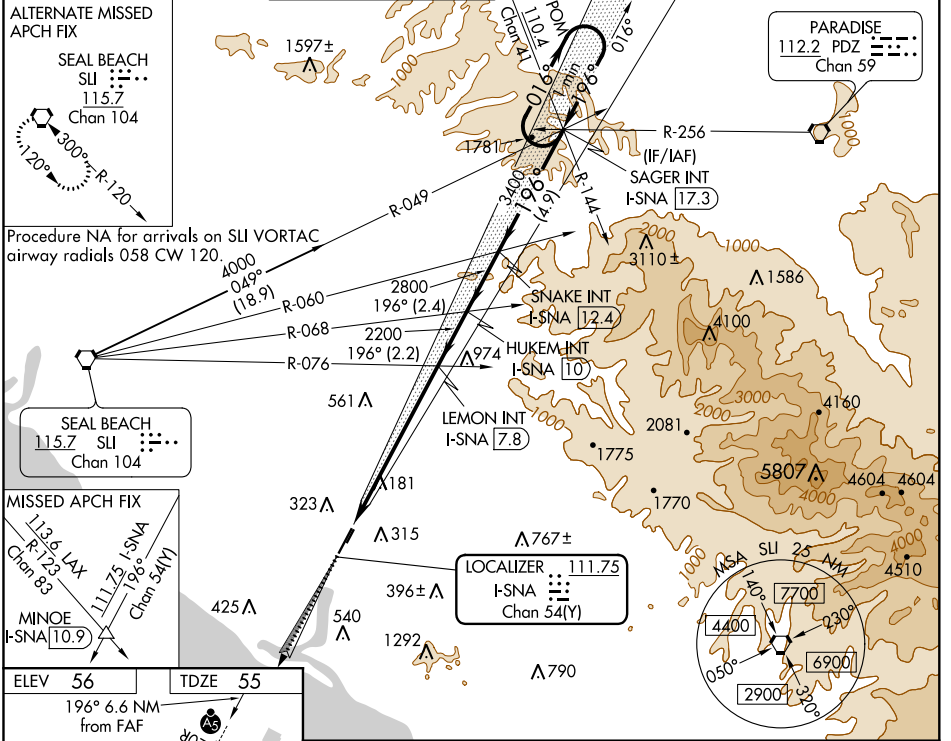


LOC/DME I-SNA <b>111.75</b> Chan <b>54(Y)</b>	APP CRS <b>196°</b>	Rwy Idg TDZE Apt Elev	<b>5700</b> <b>55</b> <b>56</b>
---	------------------------	-----------------------------	---------------------------------------

# ILS RWY 20R (SA CAT I)

JOHN WAYNE/ORANGE COUNTY (SNA)

<p>Requires specific OPSPEC, MSPEC, or LOA approval and use of HUD to DH. Procedure NA when control tower closed.</p>	MALSR 	MISSED APPROACH: Climb to 3000 on I-SNA LOC south course (196°) to MINOE INT/I-SNA 10.9 DME.				
	D-ATIS <b>126.0</b>	SOCAL APP CON <b>121.3 263.1</b>	JOHN WAYNE TOWER ★ <b>126.8 (CTAF) 343.625</b>	GND CON (EAST) <b>120.8</b> (WEST) <b>132.25</b>	CLNC DEL <b>118.0</b>	CPDLC



CATEGORY	A	B	C	D
S-ILS 20R	RA 201/14 166 DA 221			

**SA CATEGORY I ILS - SPECIAL AIRCREW & AIRCRAFT CERTIFICATION REQUIRED**

SW-3, 09 SEP 2021 to 07 OCT 2021

SW-3, 09 SEP 2021 to 07 OCT 2021