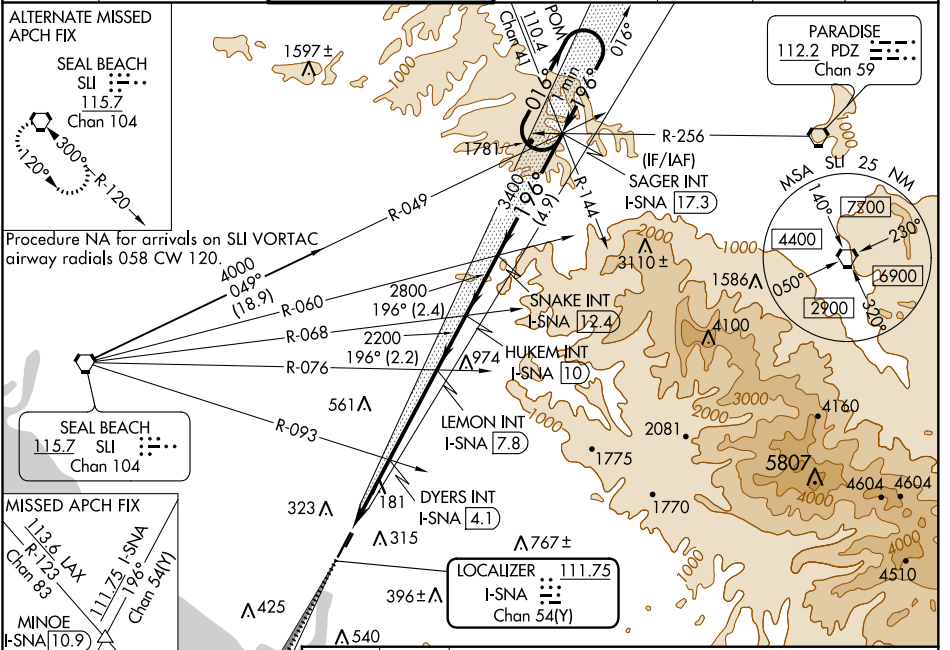


LOC/DME I-SNA 111.75 Chan 54(Y)	APP CRS 196°	Rwy Idg TDZE Apt Elev	5700 55 56
---	------------------------	-----------------------------	---------------------------------------

ILS or LOC RWY 20R

JOHN WAYNE/ORANGE COUNTY (SNA)

<p>ALTERNATE MISSED APCH FIX</p> <p>SEAL BEACH SLI 115.7 Chan 104</p> <p>Procedure NA for arrivals on SLI VORTAC airway radials 058 CW 120.</p> <p>SEAL BEACH 115.7 SLI 115.7 Chan 104</p>		<p>JOHN WAYNE TOWER *</p> <p>126.8 (CTAF) 343.625</p>	<p>GND CON (EAST) 120.8 (WEST) 132.25</p>	<p>CLNC DEL 118.0</p>	<p>CPDLC</p>	<p>UNICOM 122.95</p>
---	--	--	---	------------------------------	--------------	-----------------------------



ELEV 56	TDZE 55	3000	MINOE	VGSI and ILS glidepath not coincident (VGSI Angle 3.00/TCH 68).	SNAKE INT I-SNA [12.4]	SAGER INT I-SNA [17.3]	
196° 6.6 NM from FAF		I-SNA S crs (196°)			HUKEM INT I-SNA [10]	One Minute Holding Pattern	
118 A		# LOC only	DYERS INT I-SNA [4.1]		2200	GS 3.00° TCH 51	
210± A		I-SNA [1.1]	# I-SNA [2.2]		1040#		
REIL Rwy 20L		1.1 NM	1.9 NM	3.7 NM	2.2 NM	2.4 NM	4.9 NM
MIRL Rwy 2R-20L		CATEGORY					
HIRL Rwy 2L-20R		S-ILS 20R*					
210± A		S-LOC 20R					
FAF to MAP 6.6 NM		CIRCLING					
		DYERS FIX MINIMUMS (DUAL VOR RECEIVERS OR DME REQUIRED)					
		S-LOC 20R					
		CIRCLING					

SW-3, 09 SEP 2021 to 07 OCT 2021

SW-3, 09 SEP 2021 to 07 OCT 2021