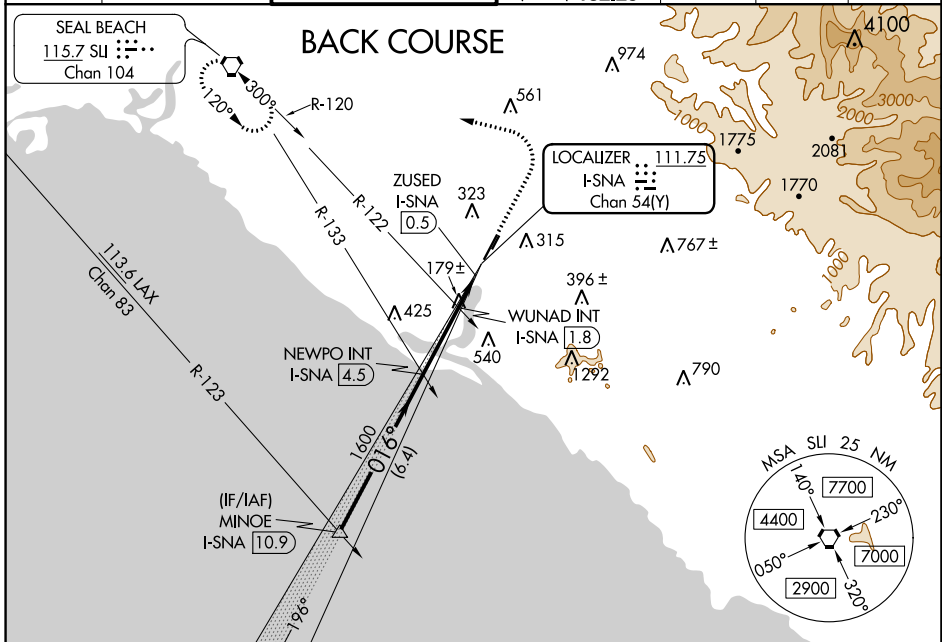


LOC/DME I-SNA <b>111.75</b> Chan 54(Y)	APP CRS <b>016°</b>	Rwy Idg <b>5700</b> TDZE <b>56</b> Apt Elev <b>56</b>
--	------------------------	---

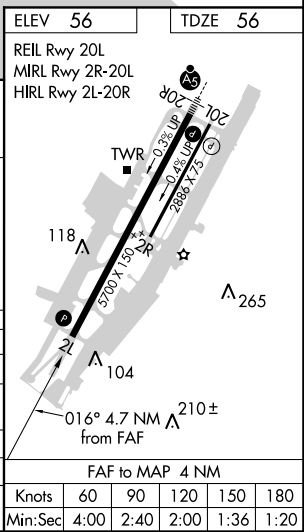
# LOC BC RWY 2L

JOHN WAYNE/ORANGE COUNTY (SNA)

When local altimeter setting not received, use Fullerton altimeter setting and increase all MDA 40 feet, increase S-2L Cats C and D and Circling Cat C visibility 1/4 SM, and increase WUNAD fix S-2L Cats C and D visibility 1/8 SM; Circling Cat C visibility 1/4 SM.	MISSED APPROACH: Climb to 800 then climbing left turn to 2600 direct SLI VORTAC and hold.					
	D-ATIS <b>126.0</b>	SOCAL APP CON <b>121.3 263.1</b>	JOHN WAYNE TOWER* <b>126.8 (CTAF) 343.625</b>	GND CON (EAST) <b>120.8</b> (WEST) <b>132.25</b>	CLNC DEL <b>118.0</b>	CPDLC



VGSi and descent angles not coincident (VGSi Angle 3.00/TCH 75). *600 when using Fullerton altimeter setting.		800	2600	SLI
MINOE I-SNA 10.9	NEWPO INT I-SNA 4.5	WUNAD INT I-SNA 1.8	I-SNA DME ANTENNA	ZUSED I-SNA 0.5
3000	1600	560	Disregard GS indications.	
6.4 NM		2.7 NM	1.3 NM	0.7
CATEGORY	A	B	C	D
S-2L	560-1	504 (600-1)	560-1 3/8	504 (600-1 3/8)
CIRCLING	640-1	584 (600-1)	840-2 1/4 784 (800-2 1/4)	1160-3 1104 (1200-3)
WUNAD FIX MINIMUMS (DUAL VOR RECEIVERS OR DME REQUIRED)				
S-2L	480-1	424 (500-1)	480-1 1/4	424 (500-1 1/4)
CIRCLING	640-1	584 (600-1)	840-2 1/4 784 (800-2 1/4)	1160-3 1104 (1200-3)



SW-3, 09 SEP 2021 to 07 OCT 2021

SW-3, 09 SEP 2021 to 07 OCT 2021