

OHSEA TWO ARRIVAL (RNAV) Transition Routes

SOCAL APP CON  
127.4 263.025  
D-ATIS  
126.0  
JOHN WAYNE TOWER ★  
126.8 343.625

REBRG △

17000  
177°  
(20)

MMTLY

17000  
144°  
(16)

ELLBC TRANSITION (ELLBC.OHSEA2)  
GOONA TRANSITION (GOONA.OHSEA2)  
RDHOT TRANSITION (RDHOT.OHSEA2)  
REBRG TRANSITION (REBRG.OHSEA2)  
REESR TRANSITION (REESR.OHSEA2)

RDHOT

17000  
129°  
(41)

ELLBC

17000  
123°  
(36)

GOONA  
FL300

17000  
140°  
(11)

REESR  
FL300

17000  
123°  
(11)

RCHEL  
FL280

GUDBY  
FL280

17000  
124°  
(9)

SHOLN  
FL250 280K

YORBS  
FL250 280K

17000  
139°  
(15)

17000  
123°  
(14)

PCIFC  
FL200

SW-3, 09 SEP 2021 to 07 OCT 2021

SW-3, 09 SEP 2021 to 07 OCT 2021

- NOTE: RADAR required.
- NOTE: RNAV 1.
- NOTE: DME/DME/IRU or GPS required.
- NOTE: Turbojet and high performance turboprop aircraft only.
- NOTE: Expect Rwy 20R unless otherwise assigned by ATC.
- NOTE: REESR TRANSITION ATC assigned only.

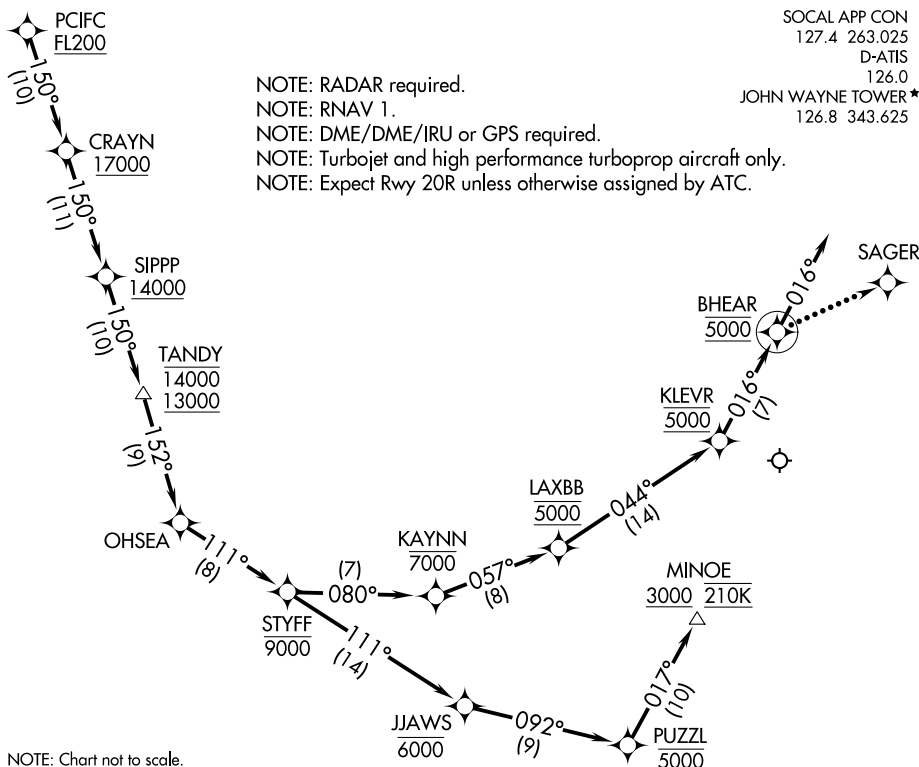
(CONTINUED ON FOLLOWING PAGE)

NOTE: Chart not to scale.

See following page for Arrival Routes.

# OHSEA TWO ARRIVAL (RNAV) Arrival Routes

SANTA ANA, CALIFORNIA



NOTE: Chart not to scale.

## ARRIVAL ROUTE DESCRIPTION

From PCIFC on track 150° to cross CRAYN at or above 17000, then on track 150° to cross SIPPP at or above 14000, then on track 150° to cross TANDY between 13000 and 14000, then on track 152° to OHSEA.

LANDING RUNWAY 2L: From OHSEA on track 111° to cross STYFF at or below 9000, then on track 111° to cross JJAWS at or below 6000, then on track 092° to cross PUZZL at 5000, then on track 017° to cross MINOE at or above 3000 and at 210K. Expect RNAV (RNP) Z RWY 2L or vectors to final approach course.

LANDING RUNWAY 20R: From OHSEA on track 111° to cross STYFF at or below 9000, then on track 080° to cross KAYNN at or below 7000, then on track 057° to cross LAXBB at 5000, then on track 044° to cross KLEVR at 5000, then on track 016° to cross BHEAR at 5000, then on track 016°. Expect RNAV (RNP) Z RWY 20R or vectors to final approach course.

### LOST COMMUNICATIONS

LANDING RUNWAY 20R: After BHEAR turn right direct SAGER and proceed on the ILS or LOC RWY 20R approach.

LANDING RUNWAY 2L: Proceed on LOC BC RWY 2L, RNAV (GPS) Y RWY 2L or RNAV (RNP) Z RWY 2L.

# OHSEA TWO ARRIVAL (RNAV) Arrival Routes

SANTA ANA, CALIFORNIA

SW-3, 09 SEP 2021 to 07 OCT 2021

SW-3, 09 SEP 2021 to 07 OCT 2021