

**TOP ALTITUDE:  
13000**

- NOTE: RADAR required.
- NOTE: RNAV-1.
- NOTE: DME/DME/IRU or GPS required.
- NOTE: Turbojet and turboprop only.
- NOTE: Parachute jumping all hours, 14000' and below, north of route between PIGGN and FNCHH.
- NOTE: Aircraft may be RADAR vectored to DANAH or PIGGN.

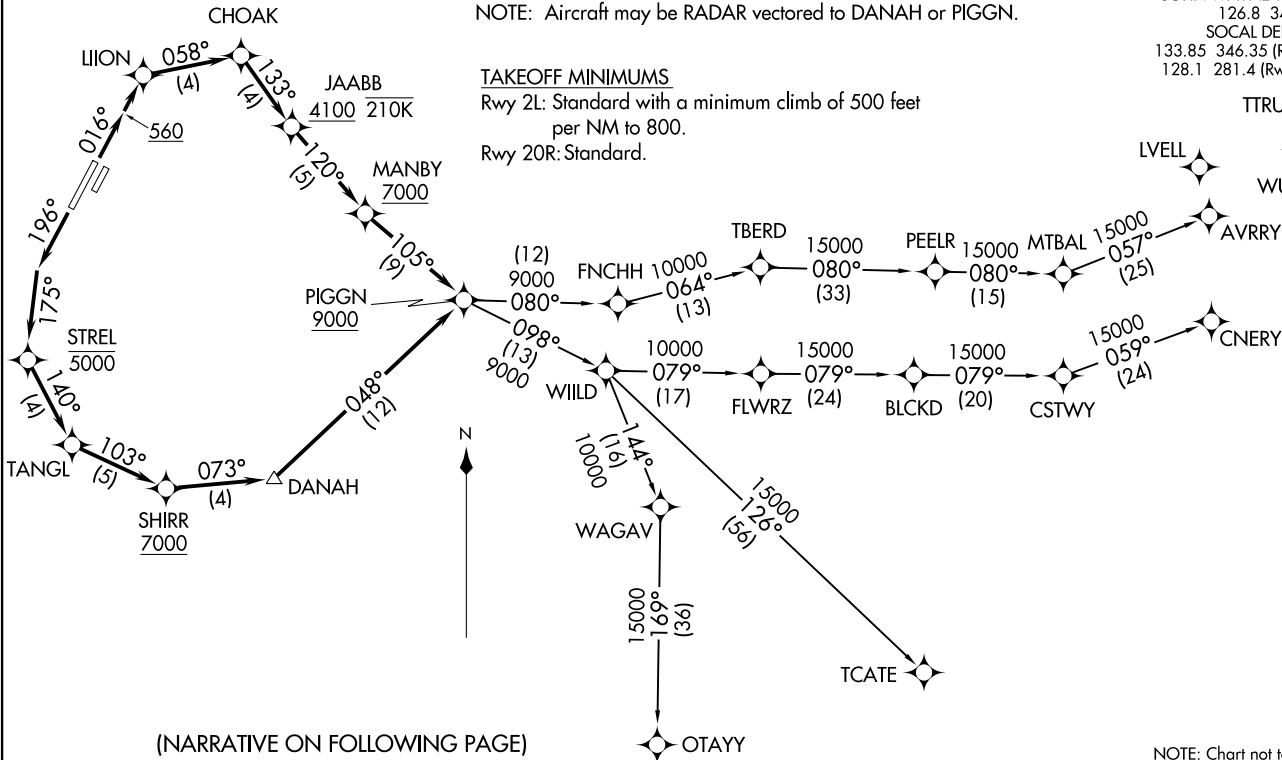
TAKEOFF MINIMUMS

Rwy 2L: Standard with a minimum climb of 500 feet per NM to 800.  
Rwy 20R: Standard.

D-ATIS 126.0  
CLNC DEL 118.0  
CPDLC  
GND CON 120.8 (EAST)  
132.25 (WEST)  
JOHN WAYNE TOWER \* 126.8 343.625  
SOCAL DEP CON 133.85 346.35 (Rwy 2L)  
128.1 281.4 (Rwy 20R)

PIGGN TWO DEPARTURE (RNAV)  
(PIGGN2.PIGGN) 17AUG17

SANTA ANA, CALIFORNIA  
JOHN WAYNE/ORANGE COUNTY (SNA)



TTRUE ✦  
WURMO ✦

(PIGGN2.PIGGN) 21168

AL-377 (FAA)

JOHN WAYNE/ORANGE COUNTY (SNA)  
SANTA ANA, CALIFORNIA

(NARRATIVE ON FOLLOWING PAGE)

NOTE: Chart not to scale.



DEPARTURE ROUTE DESCRIPTION

TAKEOFF RUNWAY 2L: Climb heading 016° to 560, then direct LIION, then on track 058° to CHOAK, then on track 133° to cross JAABB at or above 4100 and at or below 210K, then on track 120° to cross MANBY at or above 7000, then on track 105° to cross PIGGN at or above 9000, thence. . . .

TAKEOFF RUNWAY 20R: Climb heading 196° to intercept course 175° to cross STREL at or below 5000, then on track 140° to TANGL, then on track 103° to cross SHIRR at or above 7000, then on track 073° to DANAH, then on track 048° to cross PIGGN at or above 9000, thence. . . .

. . . . on (transition) maintain 13000. Expect filed altitude 10 minutes after departure.

AVRRY TRANSITION (PIGGN2.AVRRY)

CNERY TRANSITION (PIGGN2.CNERY)

OTAYY TRANSITION (PIGGN2.OTAYY)

TCATE TRANSITION (PIGGN2.TCATE)

SW-3, 09 SEP 2021 to 07 OCT 2021

SW-3, 09 SEP 2021 to 07 OCT 2021