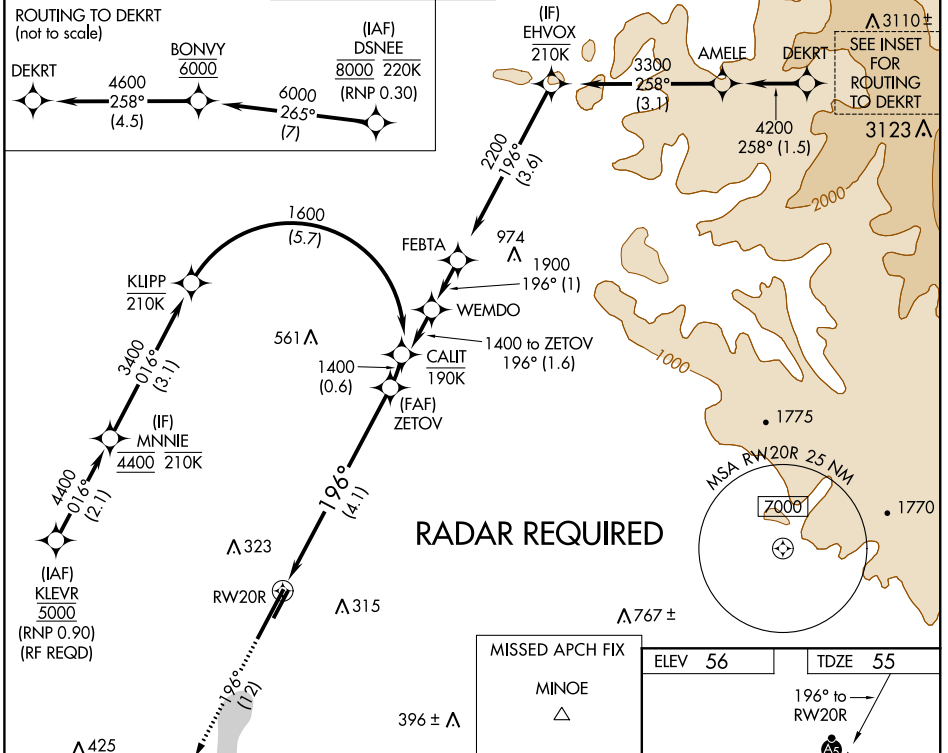


APP CRS	Rwy Idg	<b>5700</b>
<b>196°</b>	TDZE	<b>55</b>
	Apt Elev	<b>56</b>

# RNAV (RNP) Z RWY 20R

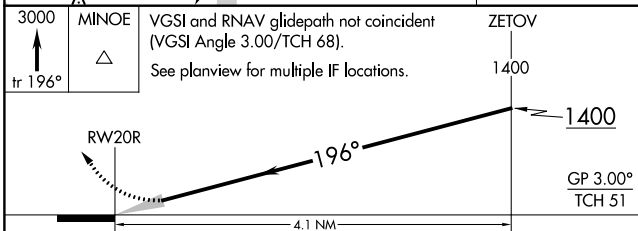
JOHN WAYNE/ORANGE COUNTY (SNA)

For uncompensated Baro-VNAV systems, procedure NA below 5°C (41°F) or above 54°C (130°F). GPS required.			MALS 		MISSED APPROACH: Climb to 3000 on track 196° to MINOE.		
D-ATIS	SOCAL APP CON	JOHN WAYNE TOWER *	GND CON (EAST)	CLNC DEL	CPDLC	UNICOM	
<b>126.0</b>	<b>121.3 263.1</b>	<b>126.8 (CTAF) 0 343.625</b>	<b>120.8 (WEST) 132.25</b>	<b>118.0</b>		<b>122.95</b>	

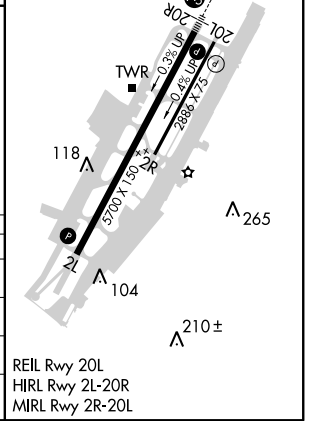


**RADAR REQUIRED**

MISSED APCH FIX	ELEV 56	TDZE 55
MINOE Δ		



CATEGORY	A	B	C	D
RNP 0.11 DA		377/30	322 (400- $\frac{5}{8}$ )	
RNP 0.15 DA		563-1 $\frac{1}{4}$	508 (600-1 $\frac{1}{4}$ )	
RNP 0.30 DA		619-1 $\frac{1}{2}$	564 (600-1 $\frac{1}{2}$ )	



**AUTHORIZATION REQUIRED**

SW-3, 09 SEP 2021 to 07 OCT 2021

SW-3, 09 SEP 2021 to 07 OCT 2021