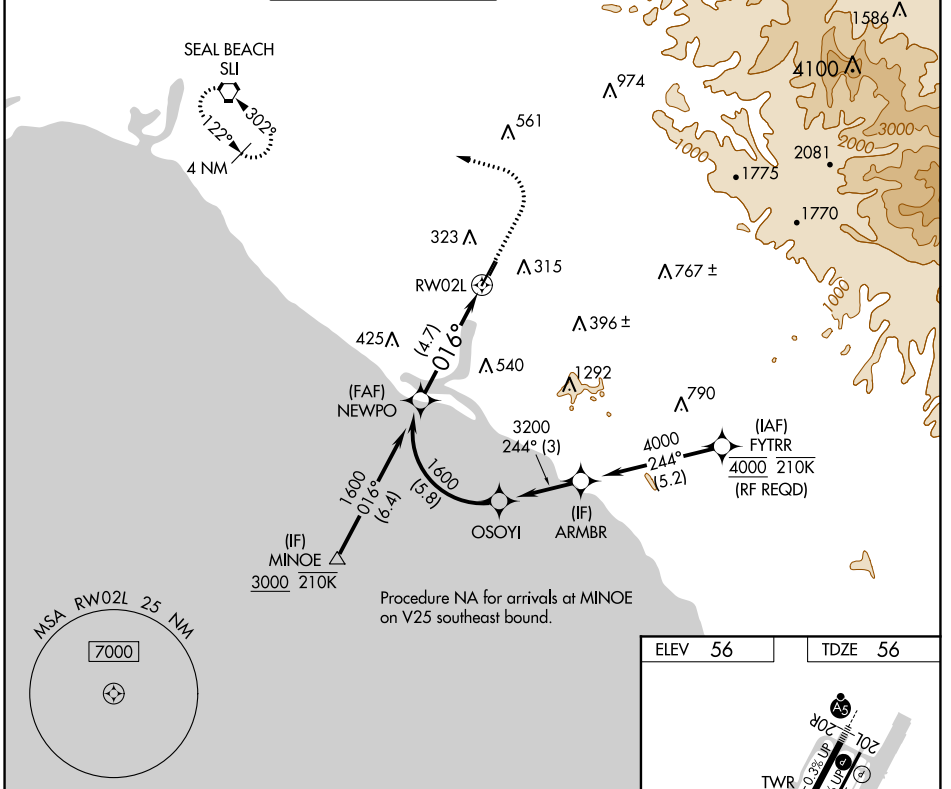


APP CRS	Rwy Idg	5700
016°	TDZE	56
	Apt Elev	56

RNAV (RNP) Z RWY 2L

JOHN WAYNE/ORANGE COUNTY (SNA)

<p>For uncompensated Baro-VNAV systems, procedure NA below 5°C (41°F) or above 54°C (130°F). GPS required.</p>		<p>MISSED APPROACH: Climb to 800 then climbing left turn to 2600 direct SLI VORTAC and hold.</p>				
D-ATIS	SOCAL APP CON	JOHN WAYNE TOWER ★	GND CON (EAST)	CLNC DEL	CPDLC	UNICOM
126.0	121.3 263.1	126.8 (CTAF) 0 343.625	120.8 (WEST) 132.25	118.0		122.95



SW-3, 09 SEP 2021 to 07 OCT 2021

SW-3, 09 SEP 2021 to 07 OCT 2021

VGSI and RNAV glidepath not coincident (VGSI Angle 3.00/TCH 75).

NEWPO 1600

GP 3.00° TCH 55

See planview for multiple IF locations.

4.7 NM

CATEGORY	A	B	C	D
RNP 0.30 DA	403-1 1/8 347 (400-1 1/8)			

AUTHORIZATION REQUIRED

