

APP CRS	Rwy Idg	5700
016°	TDZE	56
	Apt Elev	56

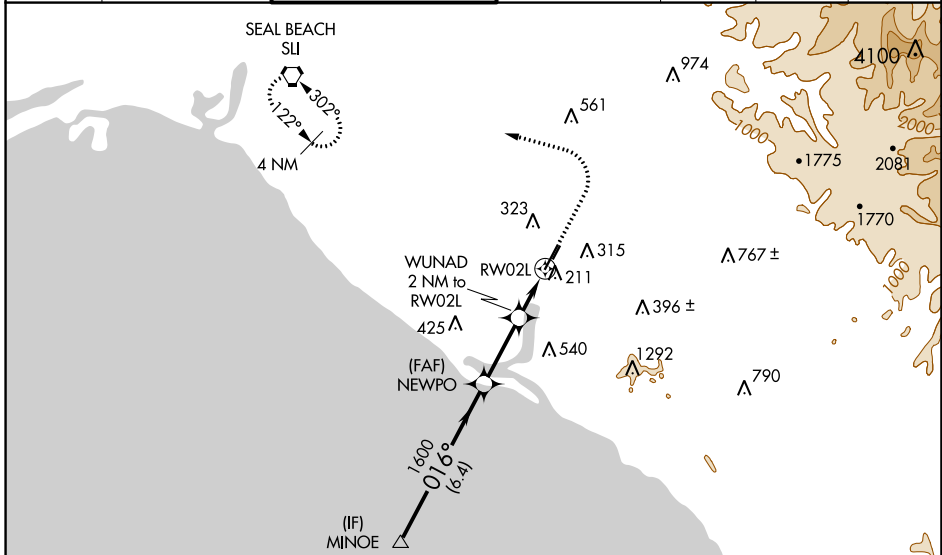
RNAV (GPS) Y RWY 2L

JOHN WAYNE/ORANGE COUNTY (SNA)

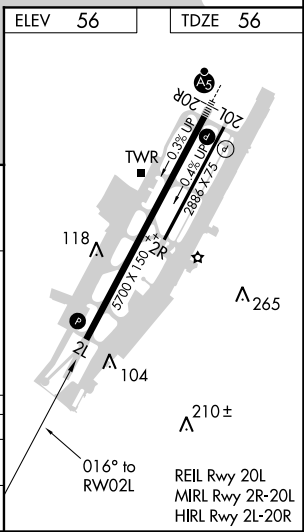
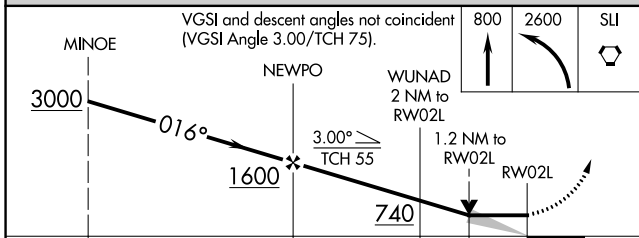
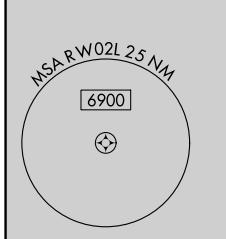
⚠ DME/DME RNP-0.3 NA. VDP NA when using Fullerton altimeter setting. When local altimeter setting not received, use Fullerton altimeter setting and increase all MDA 40 feet, increase Circling Cat C visibility ¼ SM.

MISSED APPROACH: Climb to 800 then climbing left turn to 2600 direct SLI VORTAC and hold.

D-ATIS 126.0	SOCAL APP CON 121.3 263.1	JOHN WAYNE TOWER ★ 126.8 (CTAF) 0 343.625	GND CON (EAST) 120.8 (WEST) 132.25	CLNC DEL 118.0	CPDLC	UNICOM 122.95
------------------------	-------------------------------------	--	---	--------------------------	-------	-------------------------



Procedure NA for arrivals at MINOE on V25 southeast bound.



CATEGORY	A	B	C	D
LNVA MDA	520-1 464 (500-1)		520-1 3/8 464 (500-1 3/8)	
C CIRCLING	640-1 584 (600-1)		840-2 1/4 784 (800-2 1/4)	1160-3 1104 (1200-3)

SW-3, 09 SEP 2021 to 07 OCT 2021

SW-3, 09 SEP 2021 to 07 OCT 2021