

SAVANNAH, GEORGIA

HI-ILS or LOC RWY 10

LOC I-SAV 111.35 Chan 50 (Y)	APCH CRS 097°	Rwy ldg TDZE Arprt Elev 9351 30 50
--	-------------------------	--

JAL-380 [USAF]

SAVANNAH/HILTON HEAD INTL (KSAV)

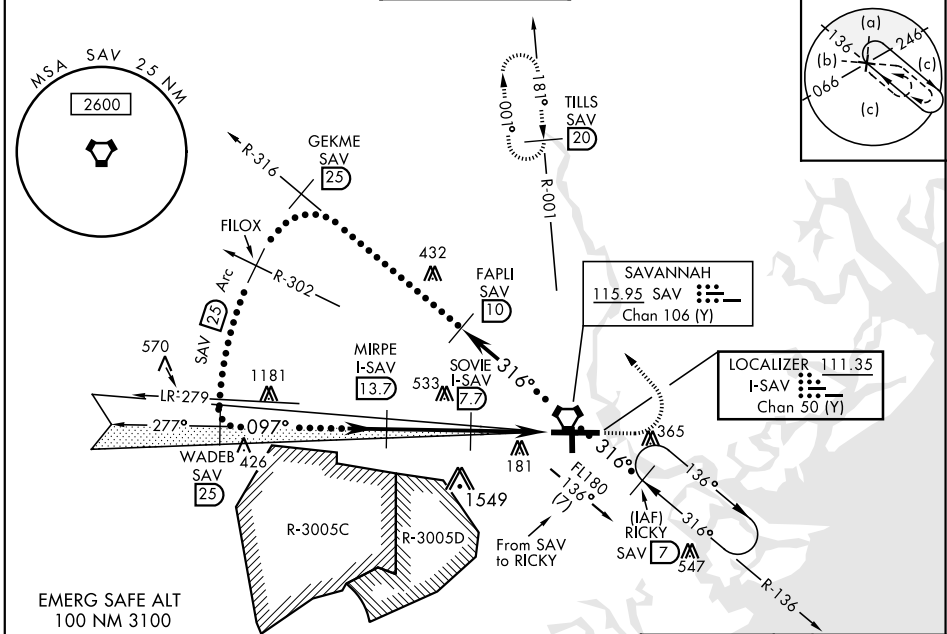
DME Required.

▼ Procedure NA when Control Tower closed.
 * When ALS inop, increase vis to RVR 40
 ** When ALS inop, increase vis to 1½ miles.



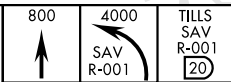
MISSED APPROACH: Climb to 800, then climbing left turn to 4000 via heading 330° and SAV VORTAC R-001 to TILLS/SAV 20 DME and hold.

ATIS ★ 123.75	SAVANNAH APP CON 125.3 353.775	SAVANNAH TOWER ★ 119.1 (CTAF) 0 257.8	GND CON 121.9 348.6	CLNC DEL 119.55 291.775
-------------------------	--	---	-------------------------------	-----------------------------------

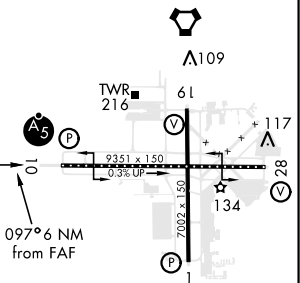
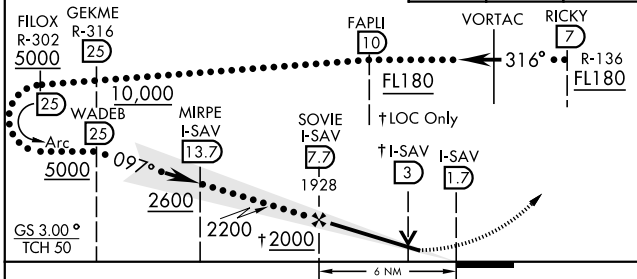


EMERG SAFE ALT
100 NM 3100

Use I-SAV DME when on the localizer course.
 VGS1 and ILS glidepath not coincident.
 VGS1 angle 3.00/TCH 69.



ELEV 50	TDZE 30
---------	---------



CATEGORY	C	D	E
S-ILS 10 *	230/18	200	(200-½)
S-LOC 10 **	500/50	470	(500-1)
CIRCLING	740-2 690 (700-2)	740-2¼ 690 (700-2¼)	900-3 850 (900-3)

REIL Rwy 19, 28
 HIRL all Rwy
 TDZL/CL Rwy 10

SAVANNAH, GEORGIA

32° 08' N-81° 12' W

SAVANNAH/HILTON HEAD INTL (KSAV)

Amdt 8 08NOV18

HI-ILS or LOC RWY 10

SE-4, 09 SEP 2021 to 07 OCT 2021

SE-4, 09 SEP 2021 to 07 OCT 2021