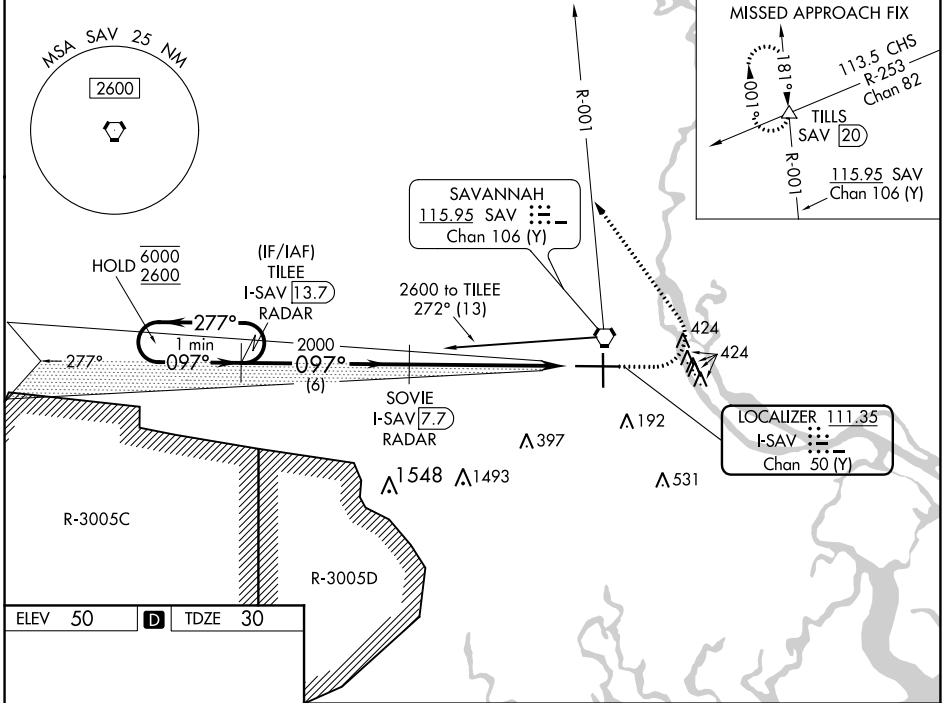


LOC I-SAV 111.35	APP CRS 097°	Rwy Idg TDZE Apt Elev	9351 30 50
Chan 50 (Y)			

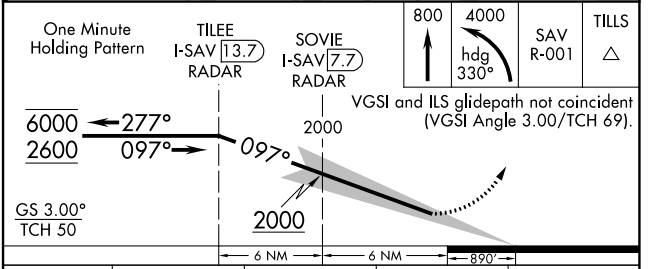
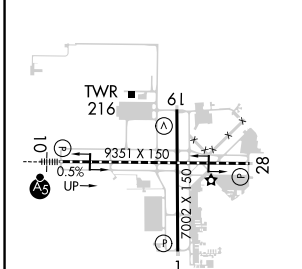
ILS RWY 10 (SA CAT I & II)

SAVANNAH/HILTON HEAD INTL (SAV)

DME required.		MALSR		MISSED APPROACH: Climb to 800 then climbing left turn to 4000 on heading 330° and SAV VORTAC R-001 and TILLS INT/SAV 20 DME and hold.	
<p>▼ SA CAT I: Requires specific OPSPEC, MSPEC, or LOA approval and use of HUD to DH. SA CAT II: Reduced lighting: Requires specific OPSPEC, MSPEC, or LOA approval and use of autoland or HUD to touchdown. Procedure NA when tower closed.</p>					
ATIS 123.75	SAVANNAH APP CON* 125.3 371.875	SAVANNAH TOWER* 119.1(CTAF) 257.8	GND CON 121.9 348.6	CLNC DEL 119.55 291.775	UNICOM 122.95



ELEV 50	D	TDZE 30
---------	----------	---------



CATEGORY	A	B	C	D
S-ILS 10	SA CAT I	RA 162/14	150 DA 180	
S-ILS 10	SA CAT II	RA 116/12	100 DA 130	

SA CATEGORY I & II ILS - SPECIAL AIRCREW & AIRCRAFT CERTIFICATION REQUIRED

SE-4, 09 SEP 2021 to 07 OCT 2021

SE-4, 09 SEP 2021 to 07 OCT 2021