

| | | | |
|--|------------------------|---|-------------|
| WAAS CH 90114 W10A | APP CRS 097° | Rwy Idg TDZE 30 Apt Elev 50 | 9351 |
|--|------------------------|---|-------------|

RNAV (GPS) RWY 10

SAVANNAH/HILTON HEAD INTL (SAV)

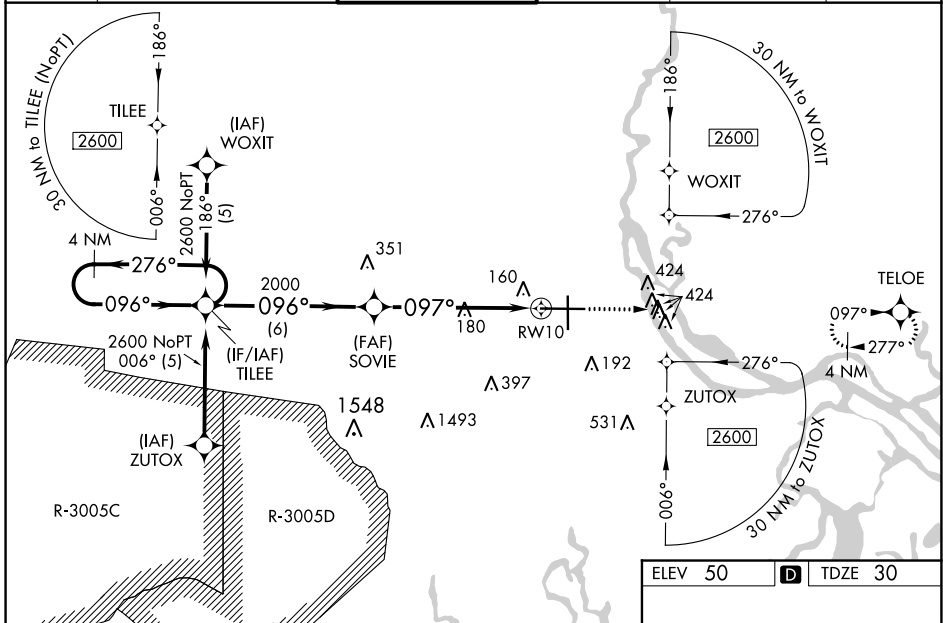
⚠ For inoperative MALS/R, increase LNAV Cat D visibility to RVR 6000. For uncompensated Baro-VNAV systems, LNAV/VNAV NA below -15°C (5°F) or above 49°C (120°F).
⚠ DME/DME RNP-0.3 NA. When local altimeter setting not received, use Hilton Head Island altimeter setting and increase all DA 65 feet and all MDA 80 feet; increase LNAV/VNAV all Cats and Circling Cats C/D visibility ¼ SM. For inoperative MALS/R when using Hilton Head Island altimeter setting, increase LPV all Cats visibility to RVR 5000.
 VDP and Baro-VNAV NA when using Hilton Head Island altimeter setting. **LPV DA visibility RVR 1800 all Cats, RVR 2000 when using Hilton Head Island, SC altimeter setting.

MALS/R



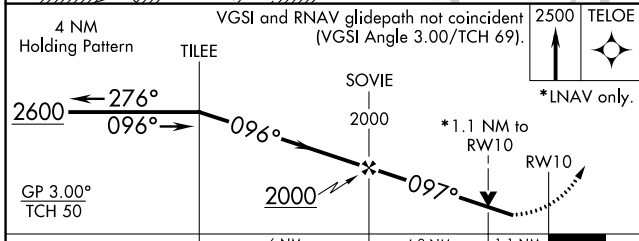
MISSED APPROACH:
Climb to 2500 direct
TELOE and hold.

| | | | | | |
|-----------------------|--|---|-------------------------------|-----------------------------------|-------------------------|
| ATIS 123.75 | SAVANNAH APP CON * 125.3 371.875 | SAVANNAH TOWER * 119.1 (CTAF) 257.8 | GND CON 121.9 348.6 | CLNC DEL 119.55 291.775 | UNICOM 122.95 |
|-----------------------|--|---|-------------------------------|-----------------------------------|-------------------------|

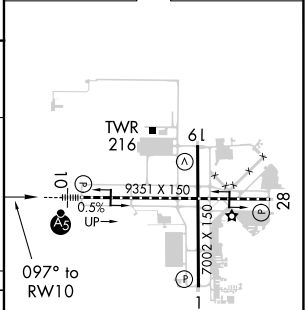


SE-4, 09 SEP 2021 to 07 OCT 2021

SE-4, 09 SEP 2021 to 07 OCT 2021



| | | |
|---------|----------|---------|
| ELEV 50 | D | TDZE 30 |
|---------|----------|---------|



| CATEGORY | A | B | C | D |
|-------------------|--------|-------------|-----------------------|------------------------|
| LPV DA ** | | 230/24 | 200 (200-½) | |
| LNAV/VNAV DA | | 504/60 | 474 (500-1¼) | |
| LNAV MDA | 440/24 | 410 (400-½) | 440/40 410 (400-¾) | 440/50 410 (400-1) |
| C CIRCLING | 520-1 | 470 (500-1) | 740-2 690 (700-2) | 740-2¼ 690 (700-2¼) |