

# RNAV (RNP) Y RWY 28

SAVANNAH/HILTON HEAD INTL (SAV)

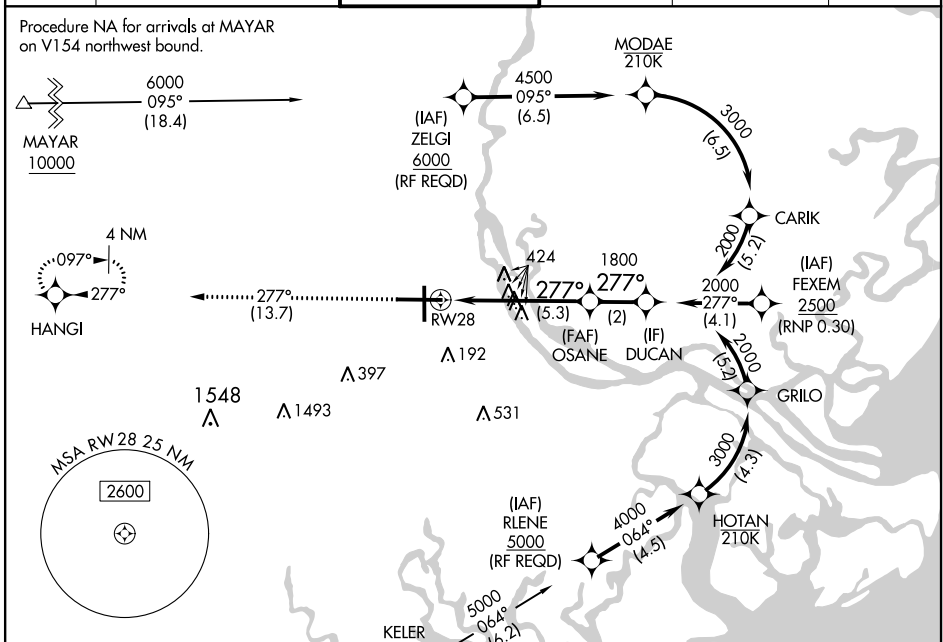
APP CRS	Rwy Idg	<b>9351</b>
<b>277°</b>	TDZE	<b>50</b>
	Apt Elev	<b>50</b>

RNP AR APCH. At KELER, and MAYAR: (RNP 1.0). At ZELGI, FEXEM, and RLENE: (RNP 0.30).

**⚠** For uncompensated Baro-VNAV systems, procedure NA below -1.5°C or above 54°C.  
**⚠** When local altimeter setting not received, procedure NA.

MISSED APPROACH: Climb to 2500 on track 277° to HANGI and hold.

ATIS <b>123.75</b>	SAVANNAH APP CON* <b>125.3 371.875</b>	SAVANNAH TOWER* <b>119.1 (CTAF) 257.8</b>	GND CON <b>121.9 348.6</b>	CLNC DEL <b>119.55 291.775</b>	UNICOM <b>122.95</b>
-----------------------	---	--	-------------------------------	-----------------------------------	-------------------------



ELEV 50	<b>D</b>	TDZE 50
---------	----------	---------



Procedure NA for arrivals at KELER on V437-441 southbound.

2500 tr 277° HANGI

VGSI and RNAV glidepath not coincident (VGSI Angle 3.00°/TCH 66).

DUCAN

OSANE

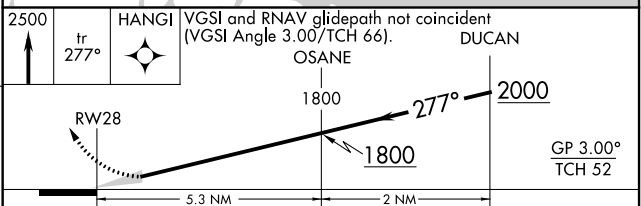
1800

2000

1800

GP 3.00° TCH 52

5.3 NM 2 NM



CATEGORY	A	B	C	D
RNP 0.15 DA		404-1	354 (400-1)	
RNP 0.30 DA		471-1¼	421 (500-1¼)	

**AUTHORIZATION REQUIRED**

SE-4, 09 SEP 2021 to 07 OCT 2021

SE-4, 09 SEP 2021 to 07 OCT 2021