

SIoux FALLS, SOUTH DAKOTA

# HI-ILS RWY 21

LOC I-JOU <b>111.1</b>	APCH CRS <b>210°</b>	Rwy ldg <b>8999</b> THRE <b>1430</b> Arprt Elev <b>1430</b>
---------------------------	-------------------------	--

JAL-396 [USAF]

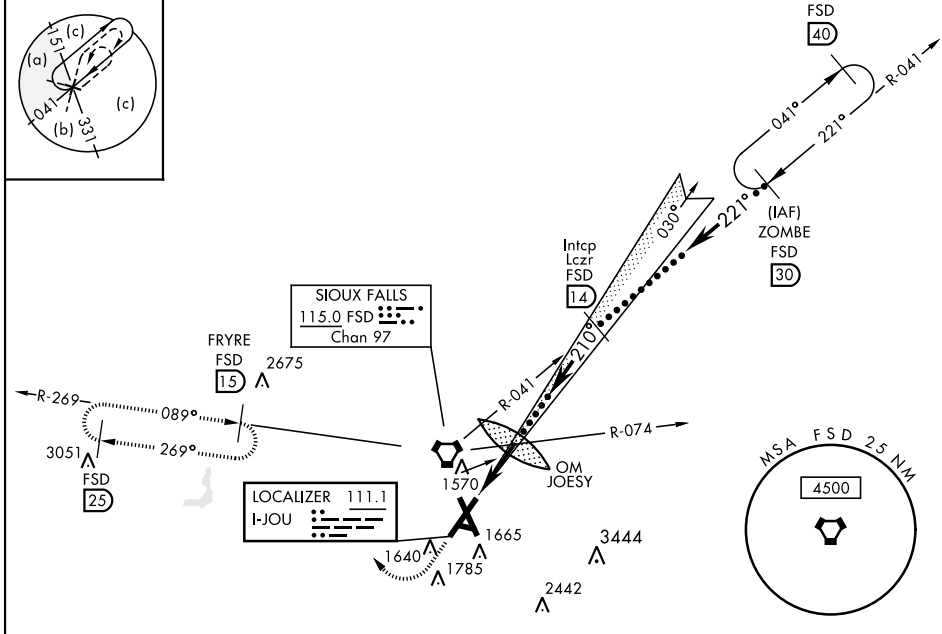
SIoux FALLS/JOE FOSS FIELD (KFSD)

▼ \*When ALS inop, increase RVR to 40 and vis to 3/4 miles.  
\*\*When ALS inop, increase CAT CD vis to 1 3/8 miles, CAT E vis to 1 1/8 miles.



MISSED APPROACH: Climb to 3400 then climbing right turn to 5000 via heading 300° and FSD R-269 to FRYRE 15 DME and hold.

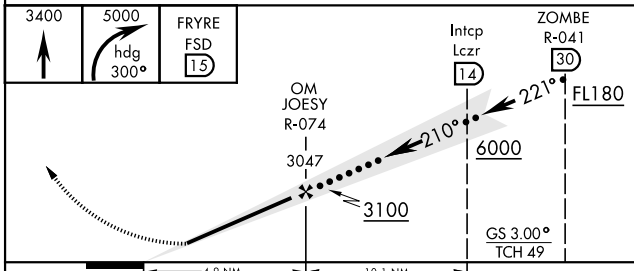
ATIS <b>126.6</b>	SIoux FALLS APP CON <b>125.8 126.9 353.6</b>	SIoux FALLS TOWER ★ <b>118.3 0 257.8</b>	GND CON <b>121.9 348.6</b>	ASR
----------------------	---	---	-------------------------------	-----



NC-1, 09 SEP 2021 to 07 OCT 2021

NC-1, 09 SEP 2021 to 07 OCT 2021

EMERG SAFE ALT 100 NM 4600



ELEV 1430	THRE 1430
210° 4.9 NM from JOEY INT/OM A5	
TDZL/CL Rwy 21 REIL Rwy 15-33 MIRL Rwy 9-27 HIRL Rwy 3-21 and 15-33	
FAF to MAP 4.9 NM	
Knots	120 140 160 180 200
Min:Sec	2:27 2:06 1:50 1:38 1:28

SIoux FALLS, SOUTH DAKOTA  
Amdt 6B 22AUG13

43° 35'N-96° 44'W

SIoux FALLS/JOE FOSS FIELD (KFSD)

# HI-ILS RWY 21