

SIoux FALLS, SOUTH DAKOTA

HI-ILS or LOC RWY 3

LOC I-FSD 109.9	APCH CRS 030°	Rwy ldg 8999 TDZE 1424 Arprt Elev 1430
---------------------------	-------------------------	--

JAL-396 [USAF]

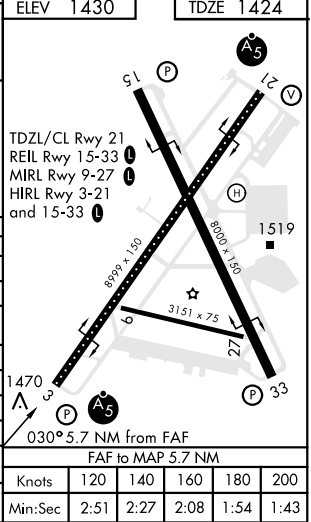
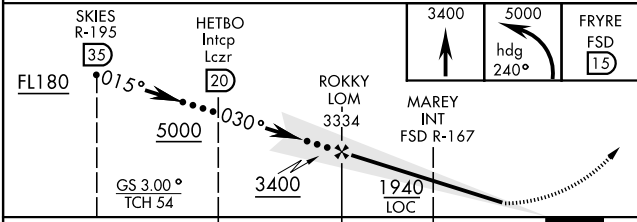
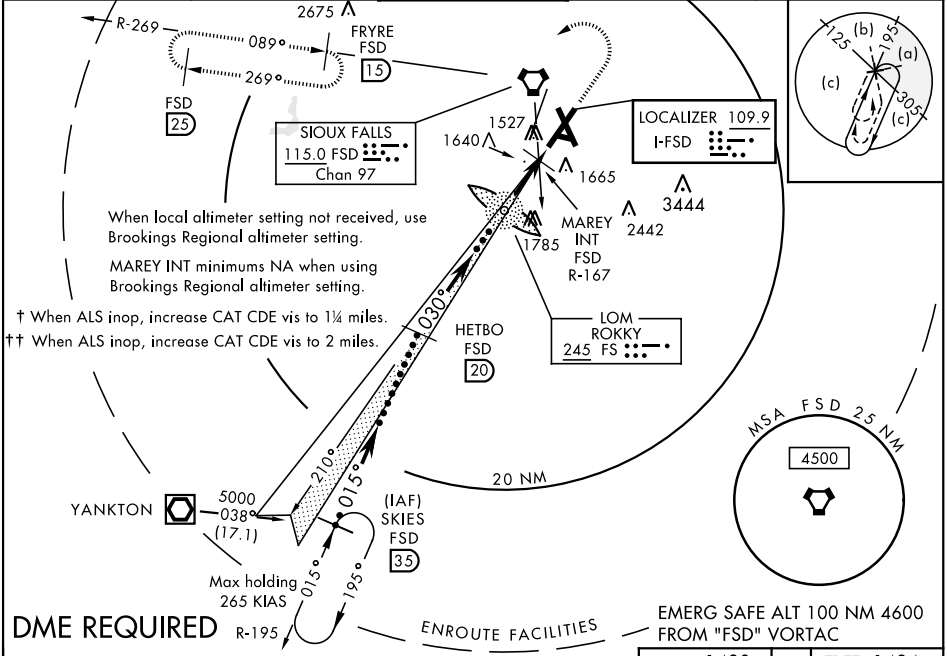
SIoux FALLS/JOE FOSS FIELD (KFSD)

▽ * When ALS inop, increase CAT E vis to 3/4 mile.
 ** When ALS inop, increase CAT E vis to 1 1/4 mile.
 *** When ALS inop, increase CAT E vis to 1 1/2 mile.



MISSED APPROACH: Climb to 3400, then climbing left turn to 5000 via heading 240° and via FSD VORTAC R-269 to FRYRE (FSD 1.5 DME) and hold.

ATIS 126.6	SIoux FALLS APP CON 125.8 126.9 353.6	SIoux FALLS TOWER * 118.3 257.8	GND CON 121.9 348.6	ASR
----------------------	---	---	-------------------------------	-----



ELEV 1430	TDZE 1424				
FL180	015°	5000	030°	3400	1940 LOC
10.8 NM	4.3 NM	1.4 NM			
CATEGORY	C	D	E		
S-ILS 3*	1674/24	250	(300-1/2)		
S-LOC 3**	1940/50 516 (600-1)	1940/60 516 (600-1 1/2)			
CIRCLING	1980-1 1/2 550 (600-1 1/2)	2040-2 610 (700-2)	2300-3 870 (900-3)		
MAREY FIX MINIMA					
S-LOC 3***	1780/24 356 (400-1/2)	1780/40 356 (400-3/4)			
BROOKINGS REGIONAL ALTIMETER SETTING					
S-ILS 3 †	1805/40	381	(400-3/4)		
S-LOC 3 ††	2080/60 656 (700-1 1/2)	2080-1 1/2 656 (700-1 1/2)	2080-1 3/4 656 (700-1 3/4)		
CIRCLING	2120-2 690 (700-2)	2280-2 3/4 850 (900-2 3/4)	2440-3 1010 (1100-3)		

SIoux FALLS, SOUTH DAKOTA
Amdt 9A 17OCT13

43°35'N-96°44'W

SIoux FALLS/JOE FOSS FIELD (KFSD)

HI-ILS or LOC RWY 3

NC-1, 09 SEP 2021 to 07 OCT 2021

NC-1, 09 SEP 2021 to 07 OCT 2021