

SIoux FALLS, SOUTH DAKOTA

# HI-TACAN RWY 15

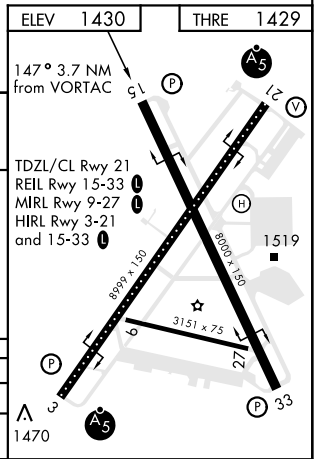
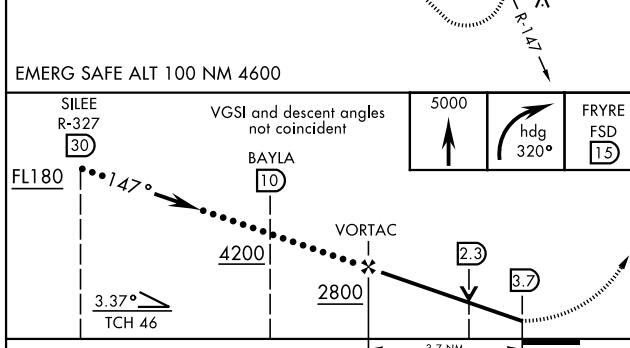
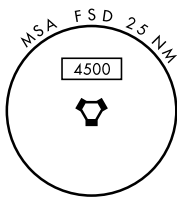
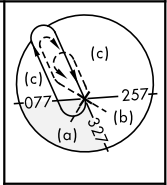
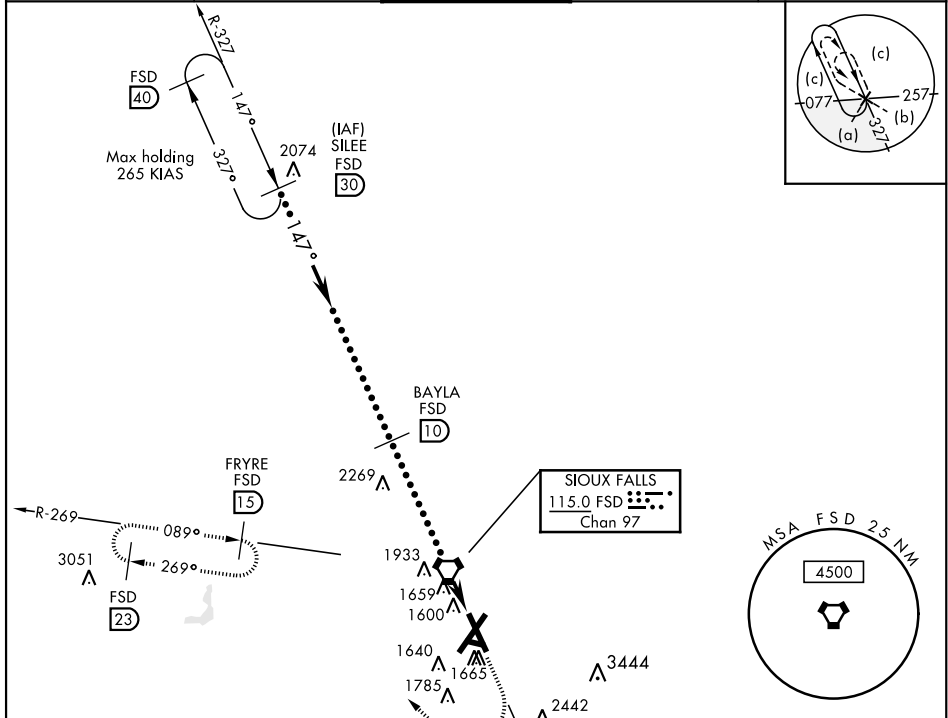
VORTAC FSD <b>115.0</b> Chan <b>97</b>	APCH CRS <b>147°</b>	Rwy ldg THRE <b>1429</b> Arprt Elev <b>1430</b>
--	-------------------------	---

JAL-396 [USAF]

SIoux FALLS/JOE FOSS FIELD (KFSD)

**▽** MISSED APPROACH: Climb to 5000 then right turn via heading 320° and FSD R-269 to FRYRE 15 DME and hold.

ATIS <b>126.6</b>	SIoux FALLS APP CON <b>125.8 126.9 353.6</b>	SIoux FALLS TOWER ★ <b>118.3 0 257.8</b>	GND CON <b>121.9 348.6</b>	ASR
----------------------	---	---	-------------------------------	-----



CATEGORY	C	D	E
S-15	1920-1 3/8	491	(500-1 3/8)
CIRCLING	1980-1 1/2 550 (600-1 1/2)	2040-2 610 (700-2)	2300-3 870 (900-3)

SIoux FALLS, SOUTH DAKOTA  
Amdt 8B 22AUG13

43° 35' N-96° 44' W

SIoux FALLS/JOE FOSS FIELD (KFSD)

# HI-TACAN RWY 15

NC-1, 09 SEP 2021 to 07 OCT 2021

NC-1, 09 SEP 2021 to 07 OCT 2021