

WAAS CH 90235 W15A	APP CRS 150°	Rwy Idg TDZE Apt Elev	8000 1429 1430
--	------------------------	-----------------------------	---

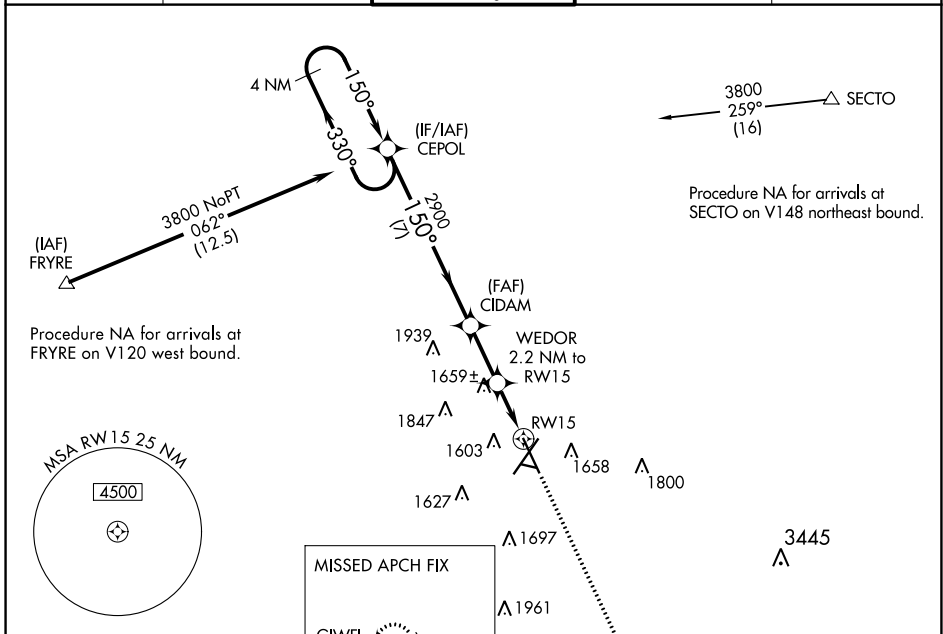
RNAV (GPS) RWY 15

JOE FOSS FLD (FSD)

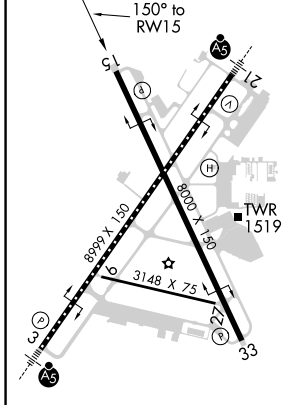
ASR For uncompensated Baro-VNAV systems, LNAV/VNAV NA below -21°C (-5°F) or above 54°C (130°F). DME/DME RNP-0.3 NA. Helicopter visibility reduction below ¾ SM not authorized.

MISSED APPROACH: Climb to 3800 direct GIWFI and hold.

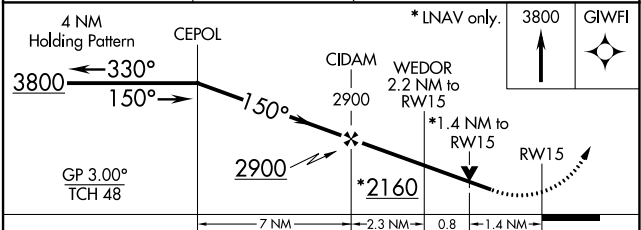
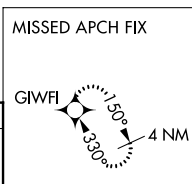
ATIS 126.6	SIoux FALLS APP CON* 125.8 284.725	SIoux FALLS TOWER* 118.3 (CTAF) 257.8	GND CON 121.9 348.6	UNICOM 122.95
----------------------	--	---	-------------------------------	-------------------------



ELEV 1430	D	TDZE 1429
-----------	----------	-----------



TDZ/CL Rwy 21
MIRL Rwy 9-27
REIL Rws 15 and 33
HIRL Rws 3-21 and 15-33



CATEGORY	A	B	C	D
LPV DA		1839-1 ³ / ₈	410 (500-1 ³ / ₈)	
LNAV/VNAV DA		1906-1 ⁵ / ₈	477 (500-1 ⁵ / ₈)	
LNAV MDA	1920-1	491 (500-1)	1920-1 ³ / ₈	491 (500-1 ³ / ₈)
C CIRCLING	1980-1	550 (600-1)	2200-2 ¹ / ₄ 770 (800-2 ¹ / ₄)	2200-2 ¹ / ₂ 770 (800-2 ¹ / ₂)

NC-1, 09 SEP 2021 to 07 OCT 2021

NC-1, 09 SEP 2021 to 07 OCT 2021