

WAAS CH <b>97722</b>	APP CRS <b>030°</b>	Rwy Idg TDZE Apt Elev	<b>8999</b> <b>1424</b> <b>1430</b>
-------------------------	------------------------	-----------------------------	---

# RNAV (GPS) RWY 3

JOE FOSS FLD (FSD)

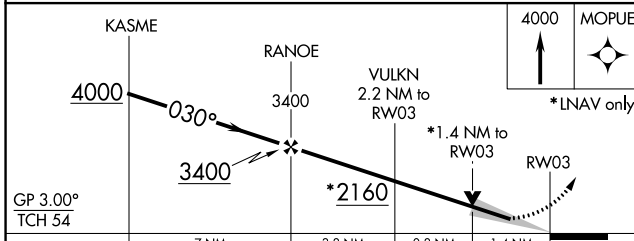
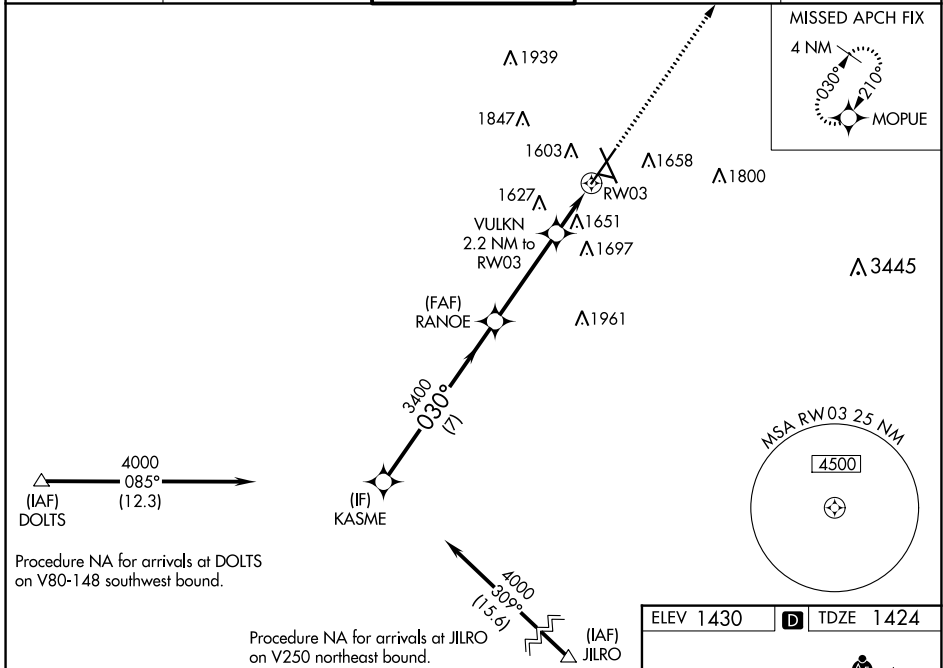
RNP APCH.

**⚠** For uncompensated Baro-VNAV systems, LNAV/VNAV NA below -17°C (2°F) or above 54°C (130°F). For inop ALS, increase LNAV/VNAV all Cats visibility to RVR 4500 and LNAV Cats C/D visibility to 1 3/8 SM.

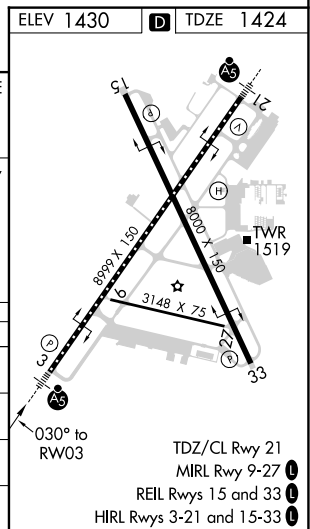


MISSED APPROACH: Climb to 4000 direct MOPUE and hold.

ATIS <b>126.6</b>	SIoux FALLS APP CON* <b>125.8 284.725</b>	SIoux FALLS TOWER* <b>118.3 (CTAF) 0 257.8</b>	GND CON <b>121.9 348.6</b>	UNICOM <b>122.95</b>
----------------------	--	---	-------------------------------	-------------------------



GP 3.00° TCH 54				
CATEGORY	A	B	C	D
LPV DA	1674/24		250 (300-1/2)	
LNAV/VNAV DA	1726/24		302 (300-1/2)	
LNAV MDA	1920/24	496 (500-1/2)	1920/50	496 (500-1)
CIRCLING	1960-1 530 (600-1)	1980-1 550 (600-1)	2060-1 3/4 630 (700-1 3/4)	2200-2 1/2 770 (800-2 1/2)



NC-1, 09 SEP 2021 to 07 OCT 2021

NC-1, 09 SEP 2021 to 07 OCT 2021