

WAAS CH 40135 W33A	APP CRS 330°	Rwy Idg TDZE 1424 Apt Elev 1430	8000
--	------------------------	---	-------------

RNAV (GPS) RWY 33

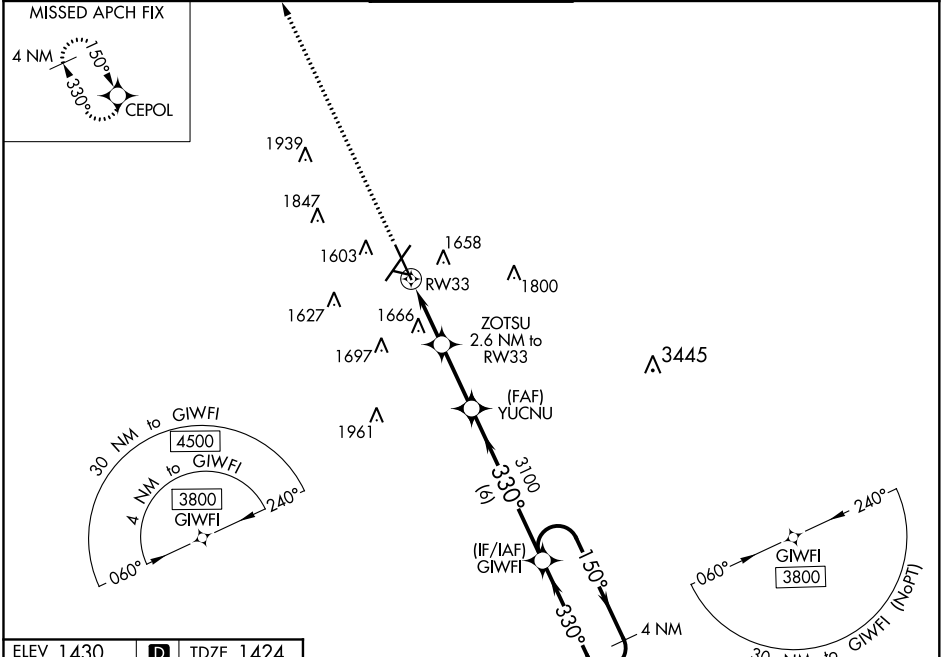
JOE FOSS FLD (F'SD)

ASR
-31°C

For uncompensated Baro-VNAV systems, procedure NA below -22°C (-7°F) or above 54°C (130°F). Rwy 33 helicopter visibility reduction below 3/4 SM NA.
DME/DME RNP-0.3 NA.

MISSED APPROACH:
Climb to 3800 direct
CEPOL and hold.

ATIS 126.6	SIoux FALLS APP CON * 125.8 284.725	SIoux FALLS TOWER * 118.3(CTAF) 0 257.8	GND CON 121.9 348.6	UNICOM 122.95
----------------------	---	---	-------------------------------	-------------------------



ELEV 1430	D	TDZE 1424
-----------	----------	-----------

