

APP CRS 098°	Rwy Idg TDZE 1424 Apt Elev 1430
------------------------	---

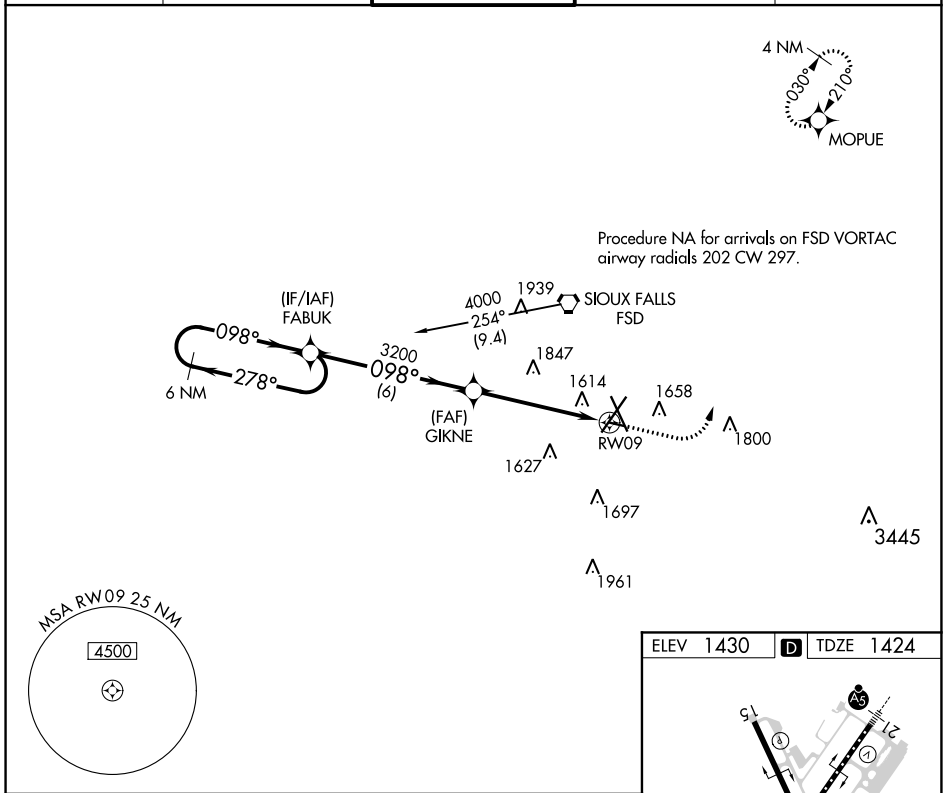
RNAV (GPS) RWY 9

JOE FOSS FLD (FSD)

RNP APCH.
 ▼ ASR Rwy 9 helicopter visibility reduction below ¾ SM NA.
 ❄️ -31°C

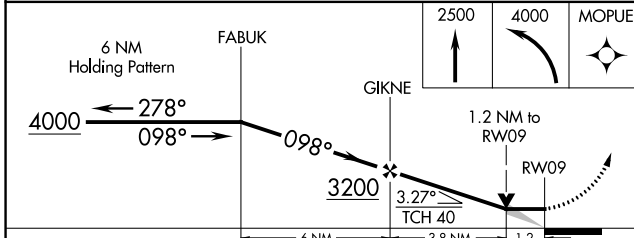
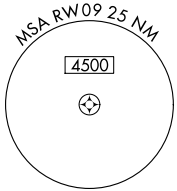
MISSED APPROACH: Climb to 2500 then climbing left turn to 4000 direct MOPUE WP and hold.

ATIS 126.6	SIoux FALLS APP CON* 125.8 284.725	SIoux FALLS TOWER* 118.3 (CTAF) 257.8	GND CON 121.9 348.6	UNICOM 122.95
----------------------	--	---	-------------------------------	-------------------------



NC-1, 09 SEP 2021 to 07 OCT 2021

NC-1, 09 SEP 2021 to 07 OCT 2021



ELEV 1430	D TDZE 1424
-----------	-------------

TDZ/CL Rwy 21
 MRL Rwy 9-27
 REIL Rws 15 and 33
 HIRL Rws 3-21 and 15-33

CATEGORY	A	B	C	D
LNAV MDA	1880-1	456 (500-1)		NA
CIRCLING	1960-1 530 (600-1)	1980-1 550 (600-1)		NA