

LOC/DME I-TXK 111.9 Chan 56	APP CRS 220°	Rwy Idg 6601 TDZE 384 Apt Elev 390
---	------------------------	---

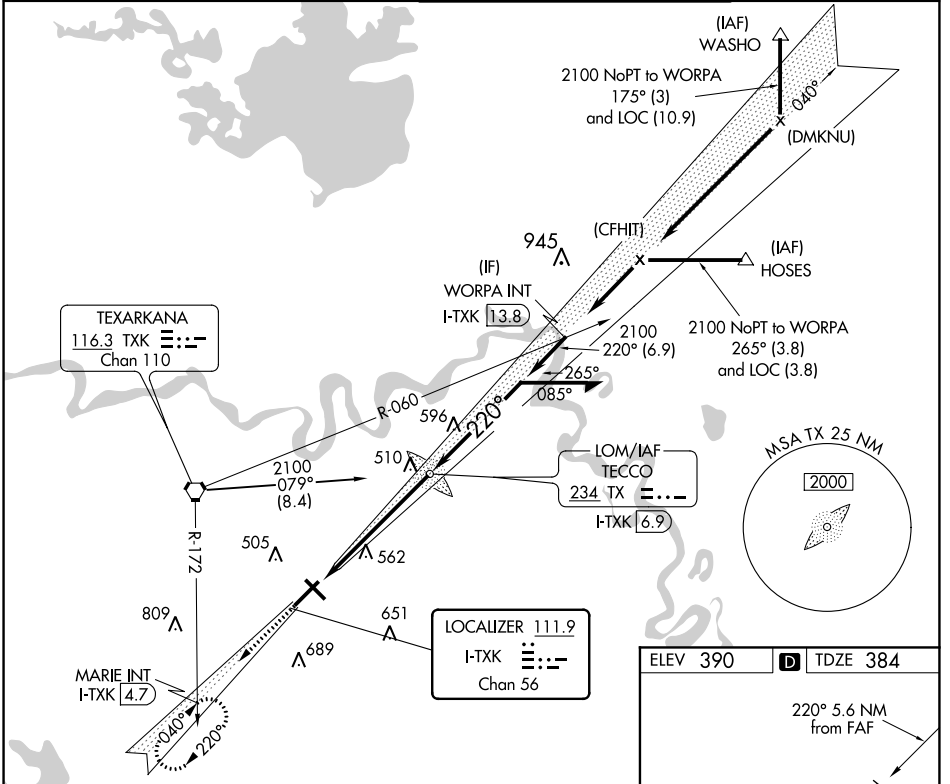
ILS or LOC RWY 22

TEXARKANA RGNI-WEBB FLD (TXK)

⚠ When local altimeter setting not received, use J Lynn Helms Sevier County altimeter setting and increase all DA/MDA 100 feet. Increase S-LOC 22 Cats C/D and Circling Cats C/D visibility ¼ mile. For inoperative MALSRR when using J Lynn Helms Sevier County altimeter setting, increase S-ILS 22 all Cats visibility to 1. VDP NA when using J Lynn Helms Sevier County altimeter setting.

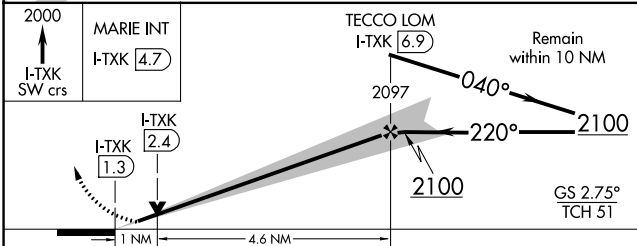
MALSRR MISSED APPROACH: Climb to 2000 via I-TXK southwest course to MARIE INT/I-TXK 4.7 DME and hold.

ATIS 120.2	FORT WORTH CENTER 123.925 269.475	TEXARKANA TOWER* 123.875 (CTAF) 0 235.625	GND CON 119.225
----------------------	---	---	---------------------------



SC-1, 09 SEP 2021 to 07 OCT 2021

SC-1, 09 SEP 2021 to 07 OCT 2021



CATEGORY	A	B	C	D
S-ILS 22	584-½		200 (200-½)	
S-LOC 22	760-½	376 (400-½)		760-¾ 376 (400-¾)
CIRCLING	820-1 430 (500-1)	860-1 470 (500-1)	900-1½ 510 (600-1½)	1000-2 610 (700-2)

ELEV 390	D TDZE 384
----------	-------------------

MIRL Rwy 13-31

HIRL Rwy 4-22

FAF to MAP 5.6 NM

Knots	60	90	120	150	180
Min:Sec	5:36	3:44	2:48	2:14	1:52