

WAAS Ch 87099 W13A	APP CRS 130°	Rwy Idg 4559 TDZE 387 Apt Elev 390
--	------------------------	---

RNAV (GPS) RWY 13

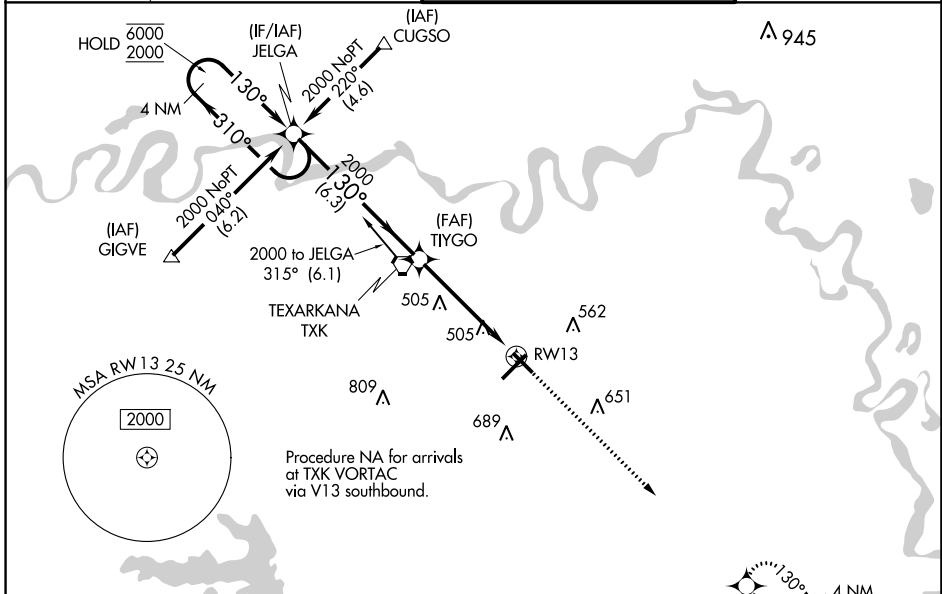
TEXARKANA RGNL-WEBB FLD (TXK)

RNP APCH.

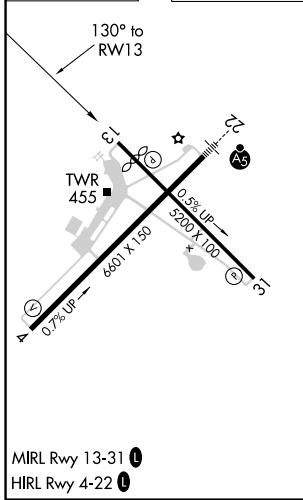
⚠ Baro-VNAV and VDP NA when using De Queen altimeter setting. Rwy 13 helicopter visibility reduction below $\frac{3}{4}$ SM NA. For uncompensated Baro-VNAV systems, LNAV/VNAV NA below -15°C or above 54°C. When local altimeter setting not received, use De Queen altimeter setting and increase all DA/MDA 100 feet; increase LNAV/VNAV all Cats and LNAV Cat C/D visibility $\frac{3}{8}$ SM, and Circling Cat C/D visibility $\frac{1}{4}$ SM.

MISSED APPROACH:
Climb to 2000 direct WATLE and hold.

ATIS 120.2	FORT WORTH CENTER 123.925 269.475	TEXARKANA TOWER* 123.875 (CTAF) 235.625	GND CON 119.225
----------------------	---	---	---------------------------



ELEV 390	D	TDZE 387
----------	----------	----------



TEXARKANA, ARKANSAS
Orig-B 10OCT19

4 NM Holding Pattern JELGA		TIYGO		2000	WATLE
6000	← 310°	130° →	2000	↑	⬠
2000	130°				
GP 3.00° TCH 54		6.3 NM		3.8 NM	
				*1.1 NM to RWY 13	
				*LNAV only.	
GP 3.00° TCH 54					
CATEGORY	A	B	C	D	
LPV DA	647-1		260 (300-1)		
LNAV/VNAV DA	767-1½		380 (400-1½)		
LNAV MDA	760-1		373 (400-1)		
CIRCLING	820-1½ 430 (500-1½)	860-1½ 470 (500-1½)	900-1½ 510 (600-1½)	1000-2 610 (700-2)	

SC-1, 09 SEP 2021 to 07 OCT 2021

SC-1, 09 SEP 2021 to 07 OCT 2021