

WAAS Ch 53699 W22A	APP CRS 220°	Rwy Idg 6601 TDZE 384 Apt Elev 390
--	------------------------	---

RNAV (GPS) RWY 22

TEXARKANA RGNL-WEBB FLD (TXK)

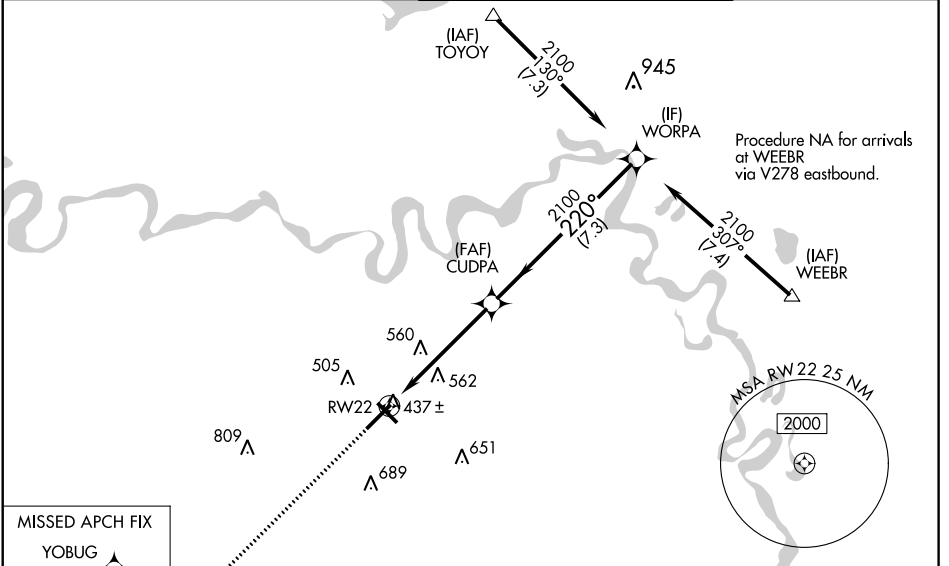
⚠ DME/DME RNP-0.3 NA. For uncompensated Baro-VNAV systems, LNAV/VNAV NA below -1.5°C (5°F) or above 48°C (118°F). When local altimeter setting not received, use J Lynn Helms Sevier County altimeter setting and increase all DA/MDA 100 feet, increase LPV all Cats visibility 1/4 mile, LNAV/VNAV all Cats visibility 1/2 mile, LNAV and circling Cat C and D visibility 1/4 mile. Baro-VNAV and VDP NA when using J Lynn Helms Sevier County altimeter setting. For inoperative MALSR when using J Lynn Helms Sevier County altimeter setting increase LPV all Cats visibility to 1/4.

MALSR



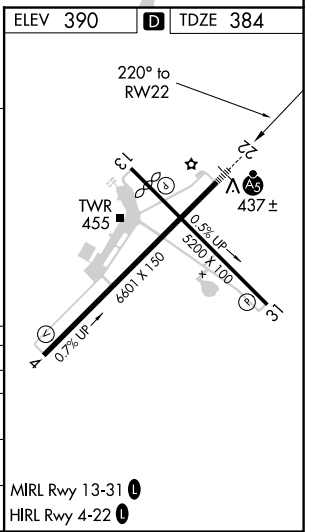
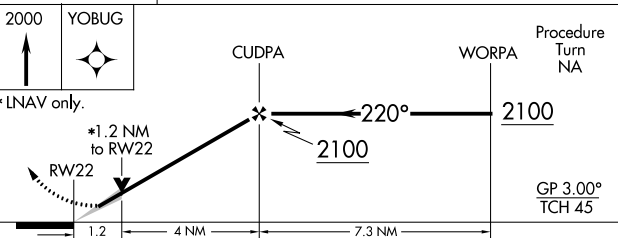
MISSED APPROACH:
Climb to 2000 direct YOBUG and hold.

ATIS 120.2	FORT WORTH CENTER 123.925 269.475	TEXARKANA TOWER ★ 123.875 (CTAF) 0 235.625	GND CON 119.225
----------------------	---	--	---------------------------



SC-1, 09 SEP 2021 to 07 OCT 2021

SC-1, 09 SEP 2021 to 07 OCT 2021



CATEGORY	A	B	C	D
LPV DA	634-1/2		250 (300-1/2)	
LNAV/VNAV DA	687-1/2	303 (300-1/2)		687-3/4 303 (300-3/4)
LNAV MDA	820-1/2	436 (500-1/2)	820-3/4 436 (500-3/4)	820-1 436 (500-1)
CIRCLING	820-1 430 (500-1)	860-1 470 (500-1)	900-1 1/2 510 (600-1 1/2)	1000-2 610 (700-2)