

HI-VOR/DME or TACAN RWY 26

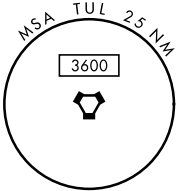
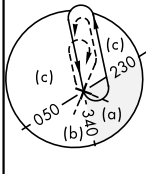
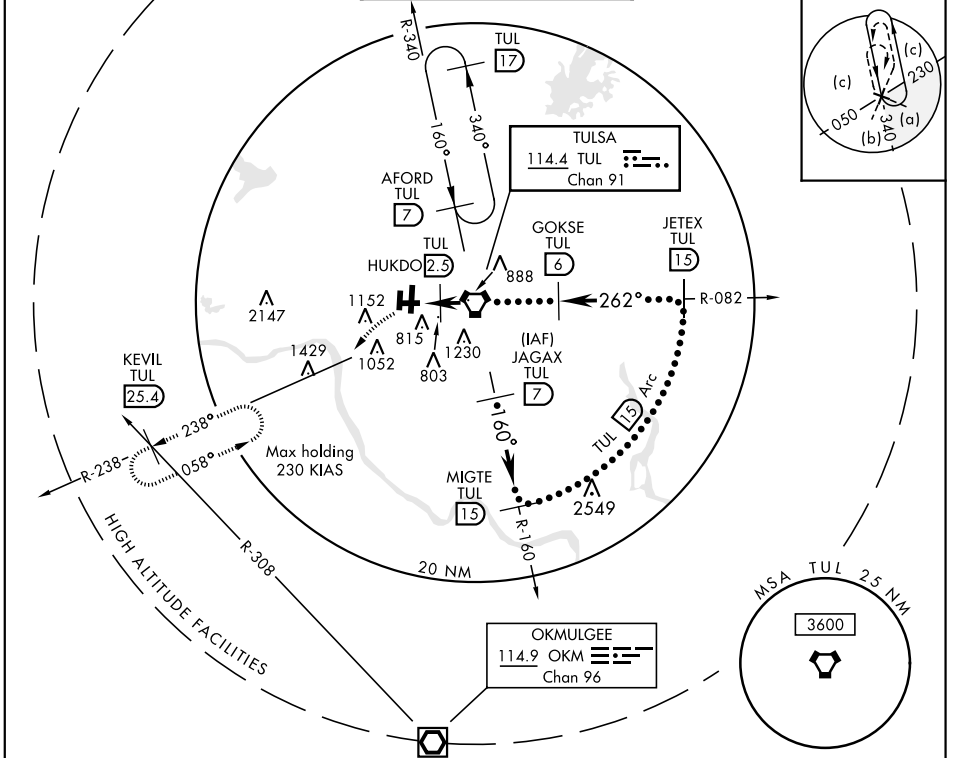
VORTAC TUL 114.4 Chan 91	APCH CRS 262°	Rwy Idg THRE 633 Arprt Elev 678	JAL-432 [USAF]	TULSA INTL (KTUL)
--	-------------------------	---	----------------	-------------------

▼ *When ALS inop, increase CAT CDE vis to 1¼ miles.
 **CAT E circling not authorized S of Rwy 8-26.

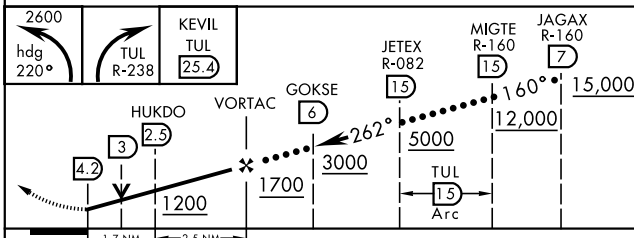
MALSR


MISSED APPROACH: Climbing left turn to 2600 via heading 220° and TUL VORTAC R-238 to KEVIL INT/TUL 25.4 DME and hold.

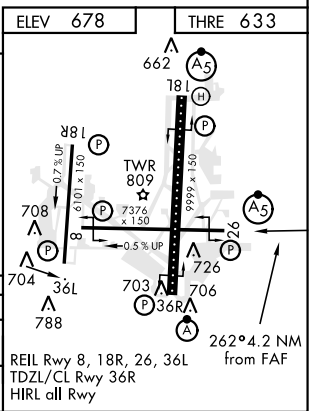
ATIS 124.9 377.2	TULSA APP CON 175° - 354° 124.0 338.3 355° - 174° 119.1 351.8	TULSA TOWER 121.2 310.8 Rwy 18L-36R, 8-26 118.7 257.8 Rwy 18R-36L	GND CON 121.9 348.6	CLNC DEL 134.05 284.7	ASR
----------------------------	---	---	-------------------------------	---------------------------------	-----



EMERG SAFE ALT 100 NM 4500



CATEGORY	C	D	E
S-26*	1060-¾	427	(400-¾)
CIRCLING**	1140-1½ 462 (500-1½)	1300-2 622 (700-2)	1300-2¼ 622 (700-2¼)



HI-VOR/DME or TACAN RWY 26

SC-1, 09 SEP 2021 to 07 OCT 2021

SC-1, 09 SEP 2021 to 07 OCT 2021