

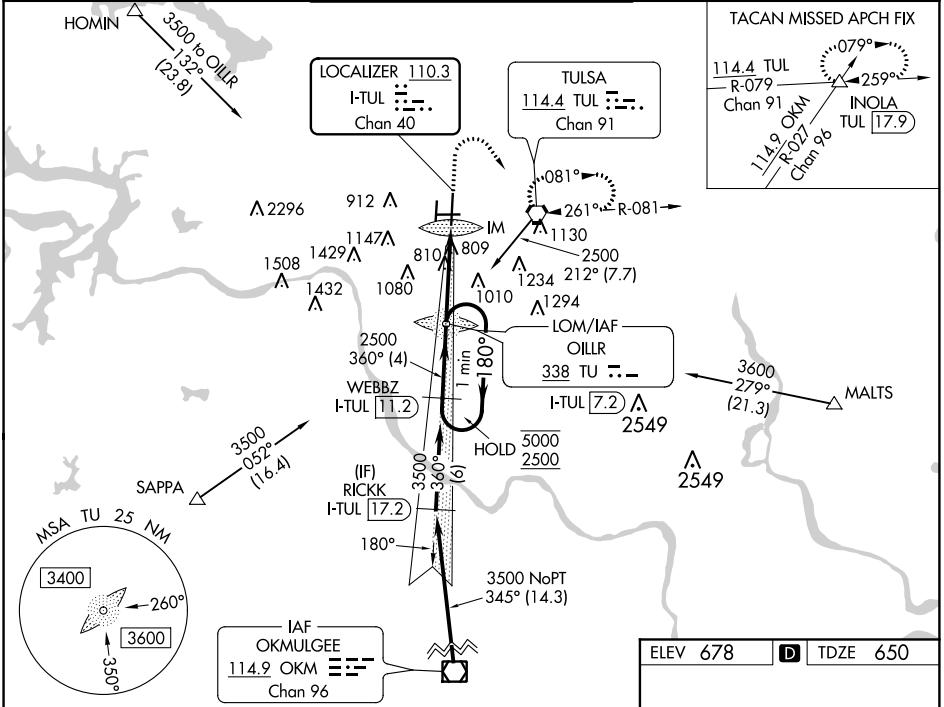
LOC/DME I-TUL	APP CRS	Rwy Idg	10000
110.3	360°	TDZE	650
Chan 40		Apt Elev	678

ILS RWY 36R (CAT II)

TULSA INTL (TUL)

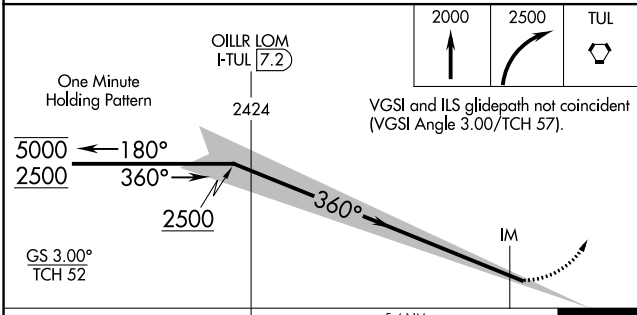
ADF or DME required for procedure entry.	ALSF-2	MISSED APPROACH: Climb to 2000 then climbing right turn to 2500 direct TUL VORTAC and hold. (TACAN aircraft climb to 2000 then climbing right turn to 3500 via TUL VORTAC R-079 to INOLA INT/17.9 DME and hold E, RT, 259° inbound).
Simultaneous approach authorized.	(A)	

D-ATIS	TULSA APP CON	TULSA TOWER	GND CON	CLNC DEL
124.9 377.2	124.0 338.3	121.2 310.8 (Rwys 18L-36R, 8-26) 118.7 257.8 (Rwy 18R-36L)	121.9 348.6	134.05 284.7



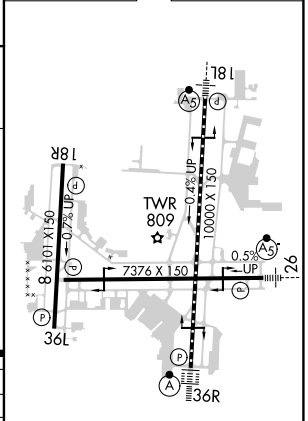
SC-1, 09 SEP 2021 to 07 OCT 2021

SC-1, 09 SEP 2021 to 07 OCT 2021



CATEGORY	A	B	C	D	
S-ILS 36R		RA 116/12 100 DA 750			

ELEV 678	D	TDZE 650
----------	---	----------



CATEGORY II ILS-SPECIAL AIRCREW & AIRCRAFT CERTIFICATION REQUIRED

TDZ/CL Rwy 36R
HIRL Rwys 8-26, 18L-36R and 18R-36L
REIL Rwys 8, 18R, 26 and 36L