

LOC I-TJY <b>111.1</b>	APP CRS <b>180°</b>	Rwy Idg TDZE Apt Elev	<b>6101</b> <b>668</b> <b>678</b>
---------------------------	------------------------	-----------------------------	---

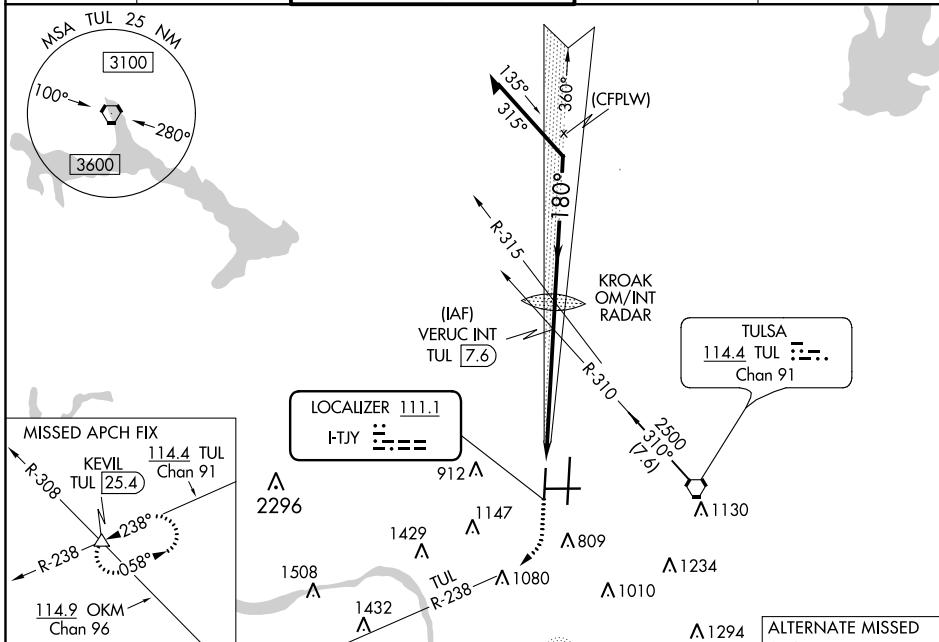
# ILS or LOC RWY 18R

TULSA INTL (TUL)

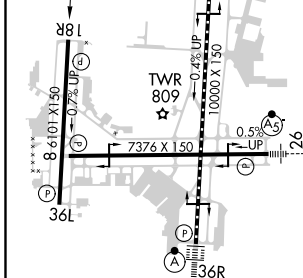
**Simultaneous approach authorized with Rwy 18L.**

**MISSED APPROACH:** Climb to 1400 then climbing right turn to 2600 via TUL VORTAC R-238 to KEVIL INT/TUL 25.4 DME and hold.

D-ATIS <b>124.9 377.2</b>	TULSA APP CON <b>124.0 338.3</b>	TULSA TOWER <b>121.2 310.8</b> (Rwys 18L-36R, 8-26) <b>118.7 257.8</b> (Rwy 18R-36L)	GND CON <b>121.9 348.6</b>	CLNC DEL <b>134.05 284.7</b>
------------------------------	-------------------------------------	--	-------------------------------	---------------------------------



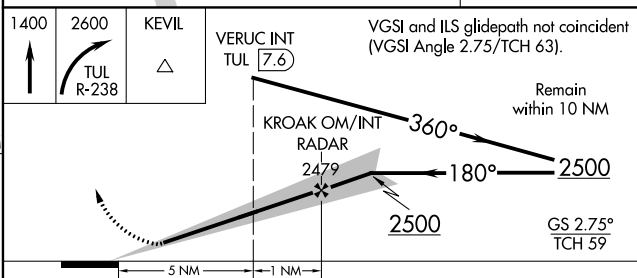
ELEV 678	<b>D</b>	TDZE 668
----------	----------	----------



TDZ/CL Rwy 36R  
HIRL Rwys 8-26, 18L-36R and 18R-36L  
REIL Rwys 8, 18R, 26 and 36L

FAF to MAP 6 NM

Knots	60	90	120	150	180
Min:Sec	6:00	4:00	3:00	2:24	2:00



CATEGORY	A	B	C	D
S-ILS 18R	918-1		250 (300-1)	
S-LOC 18R	1080-1	412 (500-1)	1080-1½	412 (500-1½)
<b>C</b> CIRCLING	1120-1 442 (500-1)	1160-1 482 (500-1)	1520-2½ 842 (900-2½)	1520-2¾ 842 (900-2¾)

SC-1, 09 SEP 2021 to 07 OCT 2021

SC-1, 09 SEP 2021 to 07 OCT 2021