


WAAS CH 93504 W18A	APP CRS 180°	Rwy Idg TDZE 641 Apt Elev 678	10000
--	------------------------	---	--------------

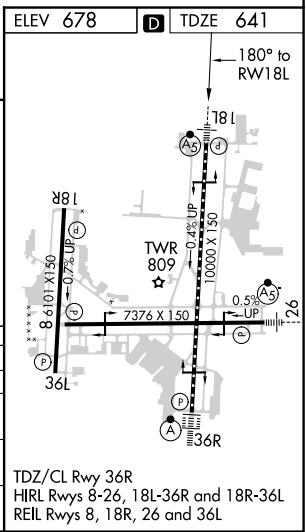
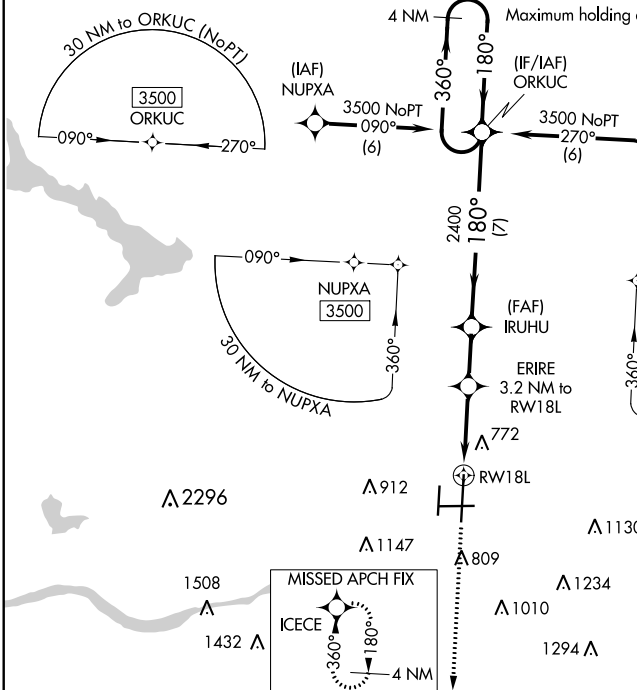
RNAV (GPS) RWY 18L

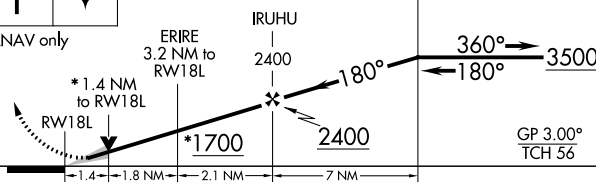
TULSA INTL (TUL)

⚠ For uncompensated Baro-VNAV systems, LNAV/VNAV NA below -13°C (9°F) or above 54°C (130°F). Circling NA for Cat E south of Rwy 8-26. DME/DME RNP-0.3 NA.
⚠ For inop MALSR, increase LPV all Cats visibility to RVR 4500, LNAV/VNAV all Cats visibility to 1½ mile, and LNAV Cat E visibility to 1¼ mile. Simultaneous approach authorized with ILS or LOC Rwy 18R. LNAV procedure NA during simultaneous operations. Use of FD or AP providing RNAV track guidance required during simultaneous operations.

MALSR

MISSED APPROACH:
 Climb to 3500 direct ICECE and hold.

D-ATIS 124.9 377.2	TULSA APP CON 124.0 338.3	TULSA TOWER 121.2 310.8 (Rwys 18L-36R, 8-26) 118.7 257.8 (Rwy 18R-36L)	GND CON 121.9 348.6	CLNC DEL 134.05 284.7
------------------------------	-------------------------------------	--	-------------------------------	---------------------------------



3500	ICECE	VGSI and RNAV glidepath not coincident (VGSI Angle 2.75/TCH 53).			4 NM Holding Pattern
<p>*LNAV only</p> 					
CATEGORY	A	B	C	D	E
LPV DA	908/24		267 (300-½)		
LNAV/VNAV DA	1128-1¼		487 (500-1¼)		
LNAV MDA	1080/24	439 (500-½)		1080/40	439 (500-¾)
CIRCLING	1120-1 442 (500-1)	1160-1 482 (500-1)	1520-2½ 842 (900-2½)	1520-2¾ 842 (900-2¾)	1520-3 842 (900-3)

SC-1, 09 SEP 2021 to 07 OCT 2021

SC-1, 09 SEP 2021 to 07 OCT 2021