

APP CRS	Rwy Idg	4750
297°	TDZE	1442
	Apt Elev	1442

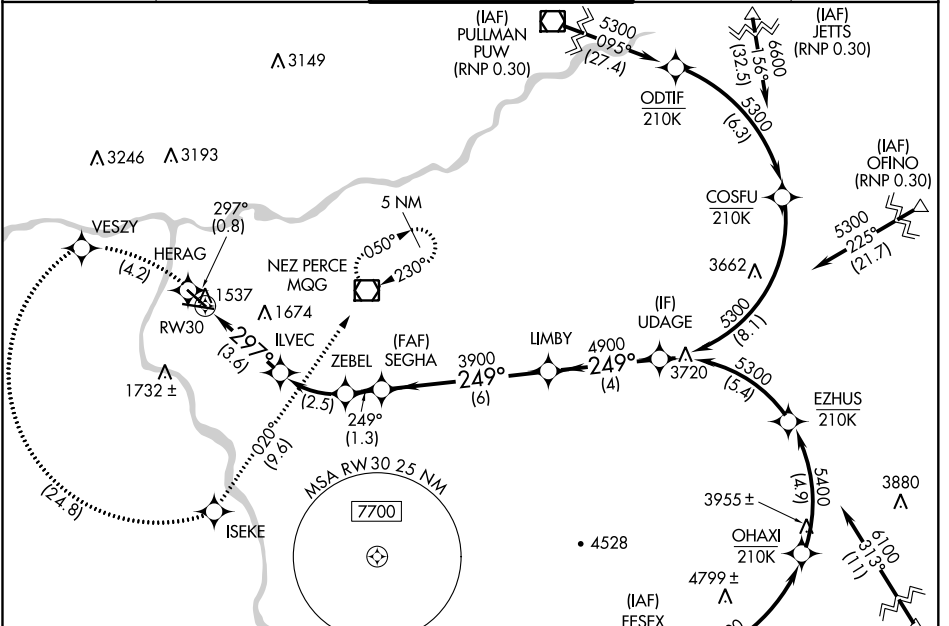
RNAV (RNP) RWY 30

LEWISTON-NEZ PERCE COUNTY (LWS)

GPS and RF Required. For uncompensated Baro-VNAV systems, procedure NA below -16°C (4°F) or above 46°C (114°F). Missed approach requires RNP less than RNP 1.00.

MISSED APPROACH: Climb to 6000 on track 297° to HERAG, left turn to VESZY, left turn to ISEKE and on track 020° to MGG VOR/DME and hold.

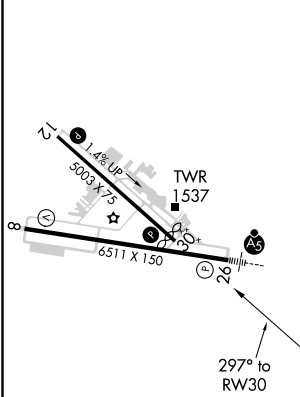
ASOS 135.575	SEATTLE CENTER 123.95 290.55	LEWISTON TOWER ★ 119.4 (CTAF) 318.8	GND CON 121.9	UNICOM 122.95
------------------------	--	---	-------------------------	-------------------------



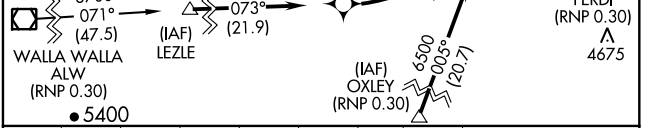
NW-1, 09 SEP 2021 to 07 OCT 2021

NW-1, 09 SEP 2021 to 07 OCT 2021

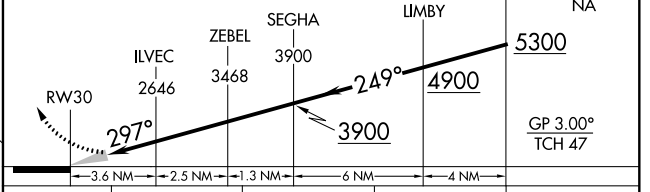
ELEV 1442	D TDZE 1442
------------------	---------------------------



REIL Rwy 8
REIL Rwy 12
HIRL Rwy 8-26
MIRL Rwy 12-30



6000	HERAG	VESZY	ISEKE	MGG	UDAGE
tr 297°				tr 020°	Procedure Turn NA



CATEGORY	A	B	C	D
RNP 0.30 DA	1778-1½		336 (400-1½)	

AUTHORIZATION REQUIRED