

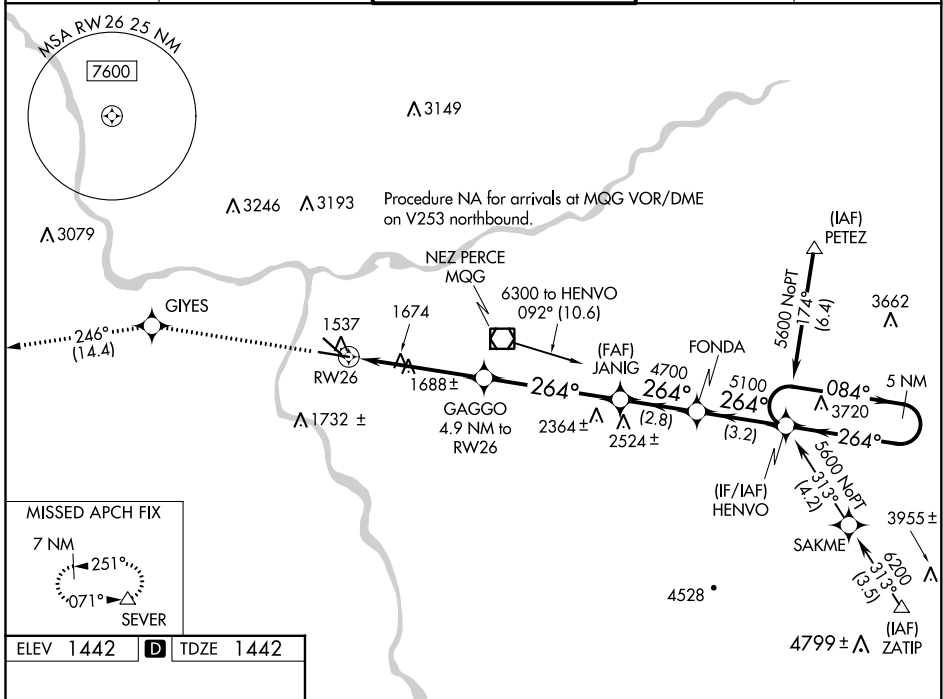
WAAS CH <b>78012</b> W <b>26A</b>	APP CRS <b>264°</b>	Rwy Idg TDZE <b>1442</b> Apt Elev <b>1442</b>	<b>6511</b>
---	------------------------	---	-------------

# RNAV (GPS) Y RWY 26

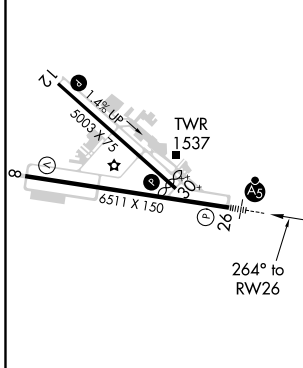
LEWISTON-NEZ PERCE COUNTY (LWS)

<p>For uncompensated Baro-VNAV systems, LNAV/VNAV NA below -17°C (2°F) or above 47°C (116°F). DME/DME RNP-0.3 NA.</p>	<p>MALSR</p>	<p>MISSED APPROACH: Climb to 7000 direct GIYES and on track 246° to SEVER and hold, continue climb-in-hold to 7000.</p>
	<p>ASOS <b>135.575</b></p>	

SEATTLE CENTER <b>123.95 290.55</b>	LEWISTON TOWER ★ <b>119.4 (CTAF) 0 318.8</b>	GND CON <b>121.9</b>	UNICOM <b>122.95</b>
--	---	-------------------------	-------------------------



ELEV <b>1442</b>	<b>D</b>	TDZE <b>1442</b>
------------------	----------	------------------



CATEGORY	A	B	C	D
LPV DA		1642-1/2	200 (200-1/2)	
LNAV/VNAV DA		1962-1 1/4	520 (600-1 1/4)	
LNAV MDA	1940-1/2	498 (500-1/2)	1940-1	498 (500-1)
CIRCLING	2000-1	558 (600-1)	2000-1 1/2 558 (600-1 1/2)	2160-2 1/4 718 (800-2 1/4)

- REIL Rwy 8
- REIL Rwy 12
- HIRL Rwy 8-26
- MIRL Rwy 12-30

NW-1, 09 SEP 2021 to 07 OCT 2021

NW-1, 09 SEP 2021 to 07 OCT 2021