

WAAS CH 97600 W08A	APP CRS 084°	Rwy Ldg TDZE Apt Elev	6511 1440 1442
--	------------------------	-----------------------------	---

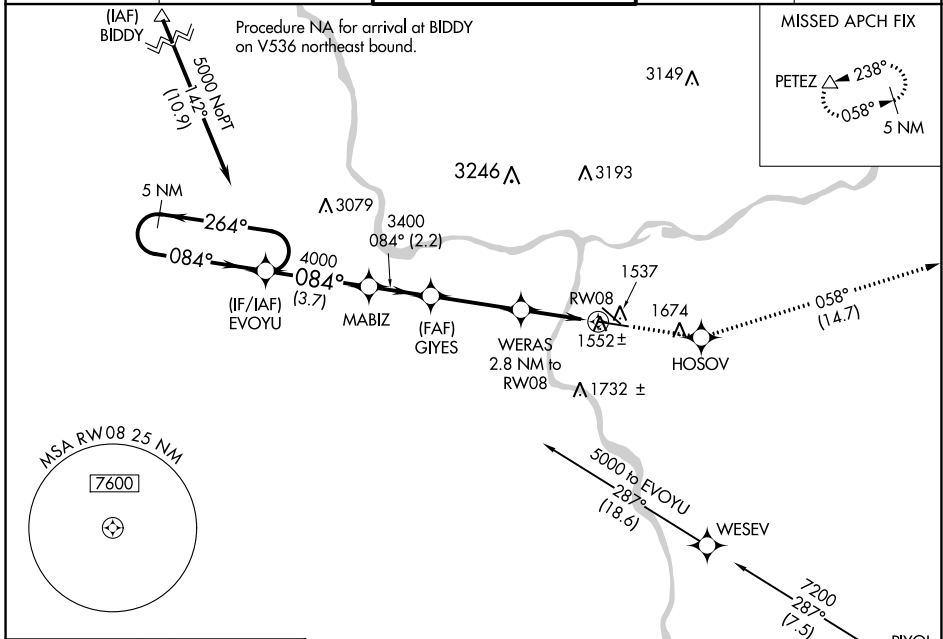
RNAV (GPS) Y RWY 8

LEWISTON-NEZ PERCE COUNTY (LWS)

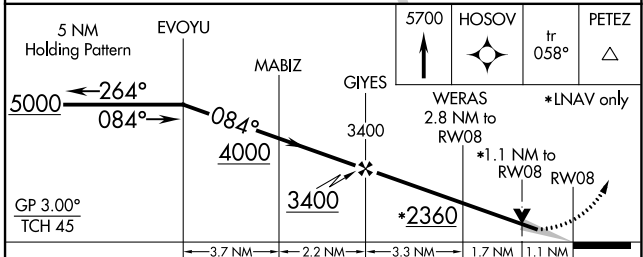
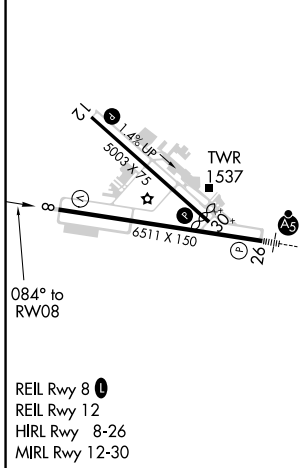
⚠ For uncompensated Baro-VNAV systems, LNAV/VNAV NA below -1.4°C (7°F) or above 34°C (93°F). DME/DME RNP-0.3 NA.

MISSED APPROACH: Climb to 5700 direct HOSOVO and on track 058° to PETEZ and hold, continue climb-in-hold to 5700.

ASOS 135.575	SEATTLE CENTER 123.95 290.55	LEWISTON TOWER ★ 119.4 (CTAF) 0 318.8	GND CON 121.9	UNICOM 122.95
------------------------	--	---	-------------------------	-------------------------



ELEV 1442	D	TDZE 1440
------------------	----------	------------------



CATEGORY	A	B	C	D
LPV DA		1690- $\frac{3}{4}$	250 (300- $\frac{3}{4}$)	
LNAV/VNAV DA		1736-1	296 (300-1)	
LNAV MDA	1820-1	380 (400-1)	1820-1 $\frac{1}{8}$	380 (400-1 $\frac{1}{8}$)
CIRCLING	2000-1	558 (600-1)	2000-1 $\frac{1}{2}$ 558 (600-1 $\frac{1}{2}$)	2160-2 $\frac{1}{4}$ 718 (800-2 $\frac{1}{4}$)

NW-1, 09 SEP 2021 to 07 OCT 2021

NW-1, 09 SEP 2021 to 07 OCT 2021