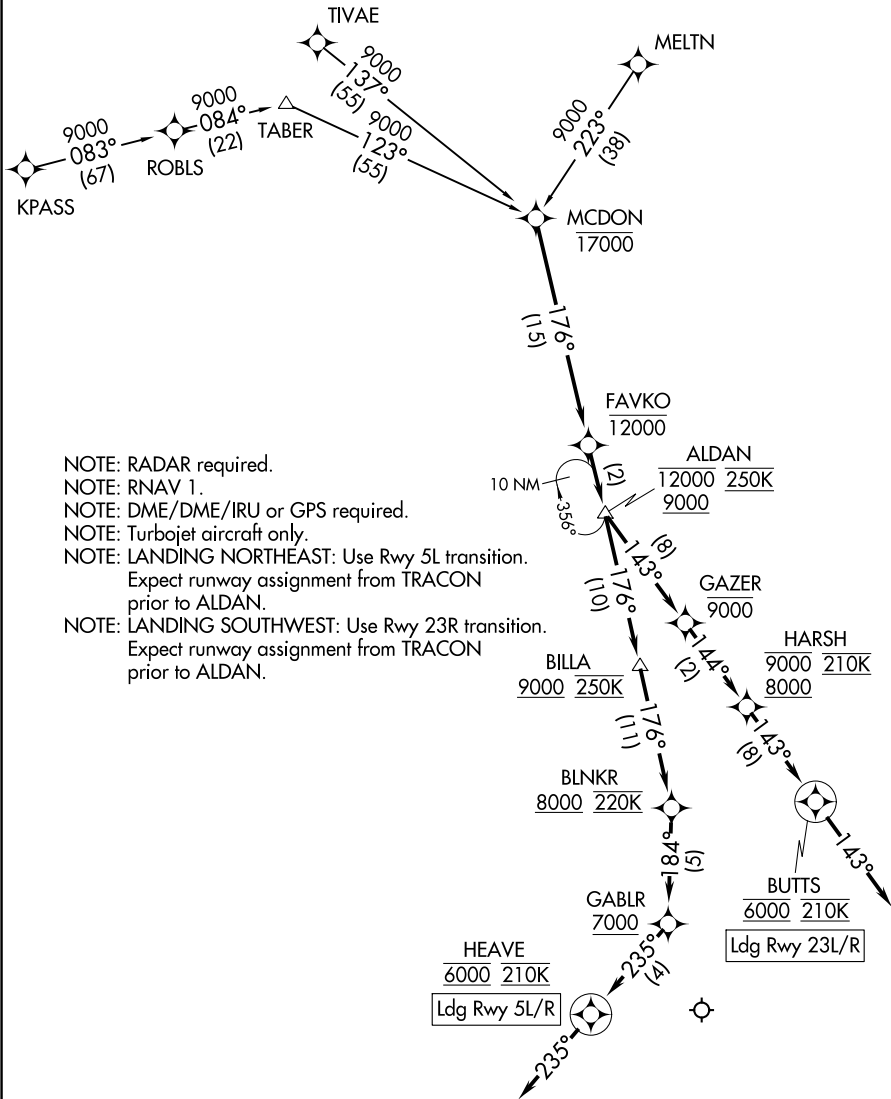


ALDAN THREE ARRIVAL (RNAV)

RALEIGH APP CON
127.675 307.9
D-ATIS
123.8



- NOTE: RADAR required.
- NOTE: RNAV 1.
- NOTE: DME/DME/IRU or GPS required.
- NOTE: Turbojet aircraft only.
- NOTE: LANDING NORTHEAST: Use Rwy 5L transition. Expect runway assignment from TRACON prior to ALDAN.
- NOTE: LANDING SOUTHWEST: Use Rwy 23R transition. Expect runway assignment from TRACON prior to ALDAN.

SE-2, 09 SEP 2021 to 07 OCT 2021

SE-2, 09 SEP 2021 to 07 OCT 2021

(NARRATIVE ON FOLLOWING PAGE)

NOTE: Chart not to scale.

ALDAN THREE ARRIVAL (RNAV)

ALDAN THREE ARRIVAL (RNAV)

ARRIVAL ROUTE DESCRIPTION

- KPASS TRANSITION (KPASS.ALDAN3)
- MELTN TRANSITION (MELTN.ALDAN3)
- TIVAE TRANSITION (TIVAE.ALDAN3)

From MCDON on track 176° to cross FAVKO at or below 12000, then on track 176° to cross ALDAN between 9000 and 12000 and at 250K.

LANDING RUNWAYS 23L/R: From ALDAN on track 143° to cross GAZER at or below 9000, then on track 144° to cross HARSH between 8000 and 9000 and at 210K, then on track 143° to cross BUTTS at 6000 and at 210K, then on track 143°. Expect ILS or RNAV RWY 23L or Rwy 23R approach.

LANDING RUNWAYS 5L/5R: From ALDAN on track 176° to cross BILLA at or above 9000, then on track 176° to cross BLNKR at or above 8000 and at 220K, then on track 184° to cross GABLR at or above 7000, then on track 235° to cross HEAVE at 6000 and at 210K, then on track 235°. Expect RNP RWY 5L approach.
Non-RNP aircraft: Expect RADAR vectors to final approach course.

SE-2, 09 SEP 2021 to 07 OCT 2021

SE-2, 09 SEP 2021 to 07 OCT 2021