

ILS or LOC RWY 23L

RALEIGH-DURHAM INTL (RDU)

LOC/DME I-LEI 108.5 Chan 22	APP CRS 234°	Rwy Idg 7500 TDZE 435 Apt Elev 435
-------------------------------------------------	------------------------	---------------------------------------------------------------

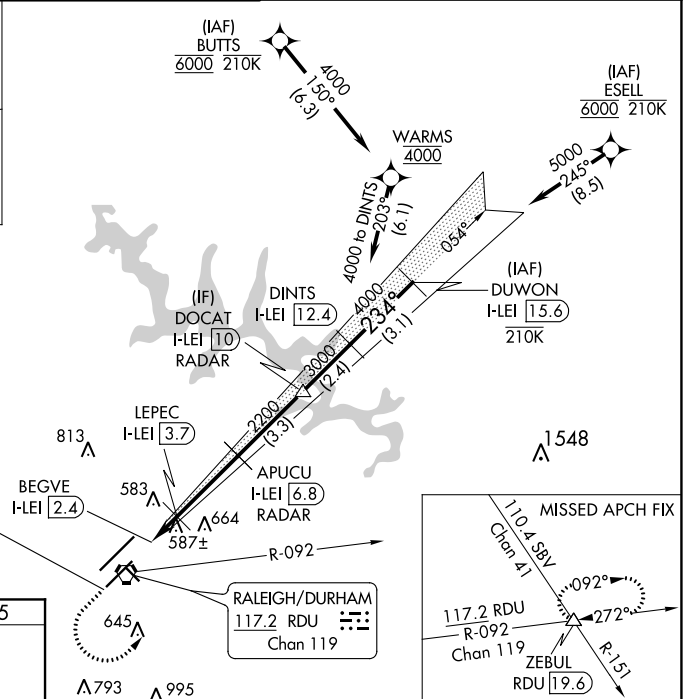
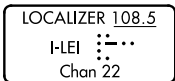
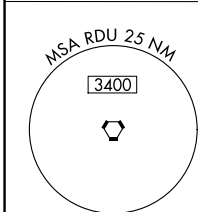
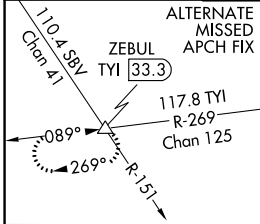
RNAV 1-DME/DME/IRU or GPS or RADAR required for procedure entry.
DME required for LOC only.

⚠ Simultaneous approach authorized. For inop ALS, increase S-ILS 23L all Cats visibility to RVR 5500. Localizer unusable for coupled approaches below 1100 or within 2 NM of threshold.

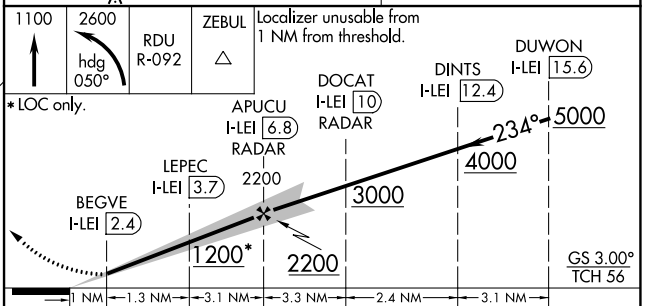
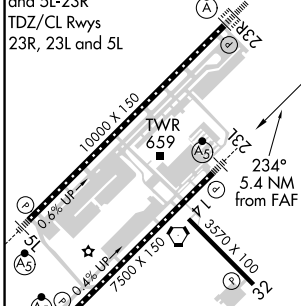


MISSED APPROACH: Climb to 1100 then climbing left turn to 2600 on heading 050° and RDU VORTAC R-092 to ZEBUL INT and hold.

D-ATIS 123.8	RALEIGH APP CON 127.675 307.9	(EAST) RALEIGH TOWER 127.45 257.8 Rwys 5R-23L and 14-32	(WEST) 119.3 257.8 Rwy 5L-23R	(EAST) GND CON 121.9 348.6 Rwys 5R-23L and 14-32	(WEST) 121.7 348.6 Rwy 5L-23R	CLNC DEL 120.1	CPDLC
------------------------	-----------------------------------------	----------------------------------------------------------------------	--------------------------------------------	---------------------------------------------------------------	--------------------------------------------	--------------------------	-------



ELEV 435	D	TDZE 435
REIL Rwy 32		
MIRL Rwy 14-32		
HIRL Rwys 5R-23L and 5L-23R		
TDZ/CL Rwys 23R, 23L and 5L		



CATEGORY	A	B	C	D
S-ILS 23L		806/35	371 (400- $\frac{3}{4}$)	
S-LOC 23L		840/40	405 (500- $\frac{3}{4}$)	
C CIRCLING	960-1 $\frac{1}{4}$	525 (600-1 $\frac{1}{4}$)	1020-1 $\frac{1}{2}$ 585 (600-1 $\frac{1}{2}$)	1180-2 $\frac{1}{2}$ 745 (800-2 $\frac{1}{2}$)