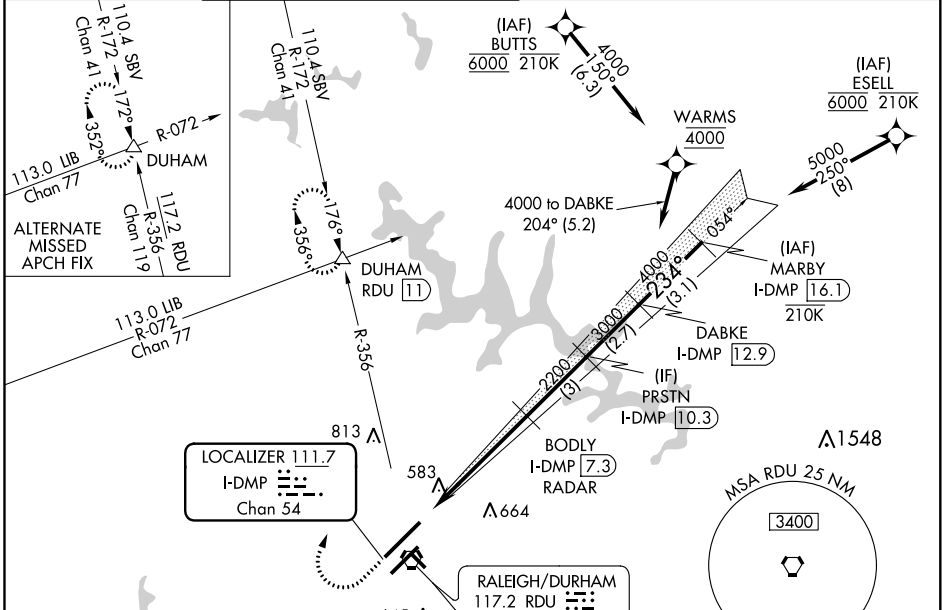


LOC/DME I-DMP <b>111.7</b> Chan <b>54</b>	APP CRS <b>234°</b>	Rwy Idg TDZE Apt Elev <b>10000</b> <b>409</b> <b>435</b>
---	------------------------	---

# ILS or LOC RWY 23R

RALEIGH-DURHAM INTL (RDU)

RNAV 1-DME/DME/IRU or GPS or RADAR required for procedure entry. RADAR or DME required for LOC only.		ALSF-2 	MISSED APPROACH: Climb to 1000 then climbing right turn to 2200 on RDU VORTAC R-356 to DUHAM INT/RDU 11 DME and hold.		
Simultaneous approach authorized. For inop ALS increase S-LOC 23R Cat C/D visibility to 1 1/2 SM.					
D-ATIS <b>123.8</b>	RALEIGH APP CON <b>127.675 307.9</b>	(EAST) RALEIGH TOWER (WEST) <b>127.45 257.8</b> <b>119.3 257.8</b>	(EAST) GND CON (WEST) <b>121.9 348.6</b> <b>121.7 348.6</b>	CLNC DEL <b>120.1</b>	CPDLC
		Rwys 5R-23L and 14-32	Rwy 5L-23R	Rwys 5R-23L and 14-32	Rwy 5L-23R



ELEV <b>435</b>	TDZE <b>409</b>
REIL Rwy 32	234° 5.5 NM from FAF
MIRL Rwy 14-32	
HIRL Rwys 5R-23L and 5L-23R	
TDZ/CL Rwys 23R, 23L and 5L	
FAF to MAP 5.5 NM	
Knots	60   90   120   150   180
Min:Sec	5:30   3:40   2:45   2:12   1:50

1000	2200	RDU R-356	DUHAM	VGSI and ILS glidepath not coincident (VGSI Angle 3.00/TCH 69).	
*LOC only.		BODLY I-DMP [7.3] RADAR	PRSTN I-DMP [10.3]	DABKE I-DMP [12.9]	MARBY I-DMP [16.1]
		I-DMP [1.8]	*I-DMP [3.4]	2200	234°
CATEGORY		A	B	C	D
S-ILS 23R		609/18   200 (200-1/2)			
S-LOC 23R		980/24   571 (600-1/2)	980-1 1/4   571 (600-1 1/4)		
CIRCLING		980-1   545 (600-1)	1020-1 1/2   585 (600-1 1/2)	1180-2 1/2   745 (800-2 1/2)	

SE-2, 09 SEP 2021 to 07 OCT 2021

SE-2, 09 SEP 2021 to 07 OCT 2021